



ROADHAWK 2 ENLITEN

THE ULTIMATE RELIABILITY TO
TAKE ON NEW ROADS



Firestone
ALWAYS DEPENDABLE



FIRESTONE ROADHAWK 2

USPs



Best-in-class Wet Grip

Achieving EU Label Grade A for wet grip



Improved wear / longer mileage

Increased mileage by 20% vs previous generation ¹⁾



Optimised Fuel / Energy Consumption

12% reduced rolling resistance vs previous generation ¹⁾



ELECTRIC VEHICLE READY:
TYRE DESIGNED TO MEET THE SPECIFIC REQUIREMENTS OF ELECTRIC VEHICLES

¹⁾ Based on the internal data comparison of Firestone ROADHAWK2 vs Firestone ROADHAWK, ref. size 225/55 R17 101W.



FIRESTONE ROADHAWK 2

FEATURES & BENEFITS

1 Connected shoulder blocks
To optimise contact pressure distribution for a superior wet grip, reducing slippages and improving mileage

2 Optimised proportioning of voids/ribs in center pattern
To rebalance pattern stiffness improving tyre life and worn shape and maximising water evacuation

3 New mixing technology & Nano Pro-tech™ high silica content compound
To improve filler dispersion for a winning RRC/Wet/Wear balance



4 High number of slots/chamfered sipes
To enhance water drainage, maximising grip on wet surface and to harmonise pattern stiffness, reducing slippages for a longer mileage

5 Wide shoulder lugs
To enhance water evacuation

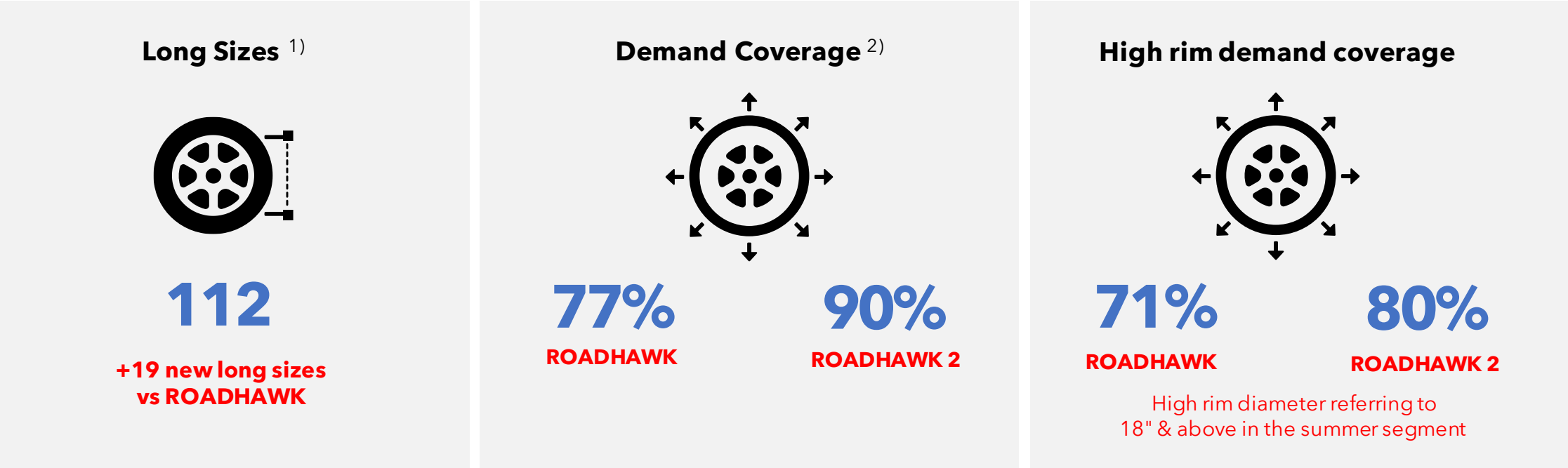
6 Lighter carcass construction
Implementing lighter and low hysteresis fabrics reducing rolling resistance



FIRESTONE ROADHAWK 2

PRODUCT INFO - DEMAND COVERAGE

ROADHAWK 2 INCREASES COVERAGE IN DEMAND
WITH 19 NEW LONG SIZES FOCUSING IN **HIGH-RIM-DIAMETER SEGMENT**



1) 16" launch in 2025 - 16 sizes planned
2) 16" to 21" demand considered - Locally adapted

FIRESTONE ROADHAWK 2

NEW FITMENTS (ON TOP OF EXISTING ROADHAWK)

BRAND	MODEL	16"	17"	18"	19"	20"
Alfa Romeo	Giulia (2015 - 2022)			255/40 R18		
Audi	Q2 (2016 - 2023)			215/50 R18		
BMW	2 Series (2021 - 2023)			255/40 R18		
BMW	3 Series (2011 - 2023)		255/40 R17	255/40 R18		
BMW	4 Series (2013 - 2023)			255/40 R18		
Citroen	C4 (2020 - 2024)		215/65 R17			
Citroen	C5 Aircross (2017 - 2023)				205/55 R19 / 235/50 R19	
DS	DS 4 (2010 - 2023)				205/55 R19	
DS	DS 7 (2018 - 2024)				235/50 R19	235/45 R20
FIAT	500 (2007- 2023)	195/45 R16				
FIAT	500C (2007-2023)	195/45 R16				
FIAT	Panda (2020)		195/45 R17			
Hyundai	I10 (2019-2023)	195/45 R16				
Hyundai	Kona (2017 - 2023)			215/50 R18		
Hyundai	Tucson (2015 - 2023)			245/50 R18	235/50 R19	235/45 R20
Ford	Ka (2021)	195/45 R16				
Ford	Mondeo (2014 - 2022)		235/50 R17			
Ford	Focus active (2018 - 2023)		235/50 R17	215/50 R18		
Ford	Fiesta (2022 - 2024)			205/40 R18		
Jeep	Compass (2014 - 2023)		215/65 R17			
Jeep	Renegade (2014 - 2023)		215/65 R17			
Jeep	Cherokee (2014 - 2023)		245/65 R17		235/50 R19	235/45 R20
Kia	Soul (2014 - 2023)		235/50 R17	215/50 R18		
Kia	Sportage (2014 - 2023)			245/50 R18	255/45 R19 / 235/50 R19	255/40 R20 / 235/45 R20
Lexus	ES (2015 - 2023)		235/50 R17	255/40 R18		
Mazda	CX-3 (2015 - 2023)			215/50 R18		
Mazda	CX-30 EV (2021 - 2023)			245/50 R18		
Mazda	MX-5 (2015 - 2023)			205/40 R18		
Mercedes	S-Class (2020 - 2023)			225/50 R18 / 245/50 R18	255/45 R19	255/40 R20
Mini	Cooper (2014 - 2023)			205/40 R18		
Mini	Hatch (2014 - 2023)			205/40 R18		
Mini	One (2014 - 2023)			205/40 R18		
Nissan	Qashqai (2021 - 2023)		215/65 R17		235/50 R19	235/45 R20

BRAND	MODEL	17"	18"	19"	20"
Opel	Corsa (2019 - 2023)		205/40 R18		
Opel	Grandland (2021 - 2023)	215/65 R17		205/55 R19 / 235/50 R19	235/45 R20
Opel	Zafira (2011 - 2019)	235/50 R17			
Peugeot	408 (2022 - 2024)			205/55 R19	
Peugeot	3008 (2016 - 2023)			205/55 R19 / 235/50 R19	235/45 R20
Peugeot	5008 (2017 - 2023)			235/50 R19	235/45 R20
Renault	Austral (2022 - 2023)	215/65 R17		205/55 R19 / 235/50 R19	235/45 R20
Renault	Twingo (2014)	195/40 R17			
Renault	Scenic (2016 - 2022)				195/55 R20
Renault	Grand Scenic (2016 - 2023)				195/55 R20
Seat	Ateca (2016- 2023)	235/50 R17	215/50 R18		
Seat	Tarraco (2018 -2023)			255/45 R19	255/40 R20 / 235/45 R20
Skoda	Karoq (2017 - 2023)		215/50 R18		
Skoda	Kodiatq (2016 - 2023)			235/50 R19	255/40 R20 / 235/45 R20
Skoda	Superb (2015 - 2019)		215/50 R18		
Suzuki	Swift (2010 -2023)	195/45 R17			
Toyota	Yaris Cross (2020 - 2023)		215/50 R18		
Toyota	C-HR (2016 - 2023)		225/50 R18		
Volkswagen	ID.4 (2021 - 2023)			255/45 R19	
Volkswagen	Passat (2019 2021)	235/50 R17		235/50 R19	
Volkswagen	Up! (2011 - 2023)	195/40 R17			
Volkswagen	Tiguan (2016 - 2023)			255/45 R19 / 235/50 R19 / 255/40 R19	255/40 R20 / 235/45 R20
Volkswagen	Tiguan L (2016 - 2023)			255/45 R19 / 235/50 R19	255/40 R20 / 235/45 R20
Volkswagen	Tiguan X (2016 - 2023)			255/45 R19 / 235/50 R19	255/40 R20 / 235/45 R20
Volkswagen	T-Roc (2017 - 2023)		215/50 R18		
Volvo	XC-40 (2017 - 2023)			255/45 R19 / 235/50 R19	255/40 R20 / 235/45 R20

Firestone
ALWAYS DEPENDABLE

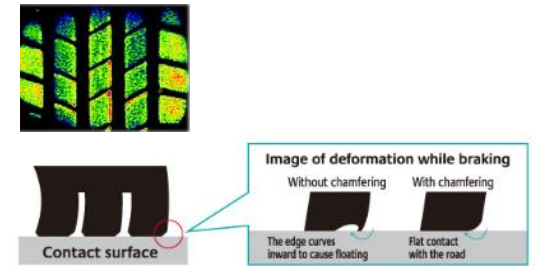


FIRESTONE ROADHAWK 2

TECHNICAL FEATURES - BEST-IN-CLASS WET GRIP

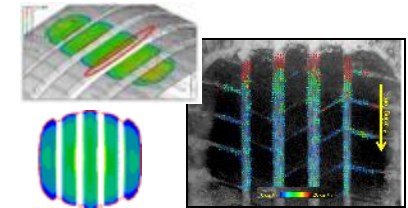
PATTERN DESIGN

- 1 Connected shoulder blocks**
Optimised pressure distribution for a superior wet grip
- 2 High number of slots / chamfered sipes - Wide shoulder lugs**
To enhance water drainage and maximise grip on wet surface thanks to larger contact area.



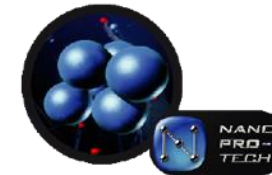
CAVITY DESIGN

- 3 Optimised proportioning of voids/ribs**
Optimal pressure distribution for water drainage improvement



COMPOUND DESIGN

- 4 Innovative mixing technology & NanoPro-Tech™ high silica content compound**
For a superior grip on wet



Firestone
ALWAYS DEPENDABLE



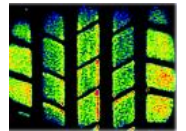


FIRESTONE ROADHAWK 2

TECHNICAL FEATURES - IMPROVED WEAR / LONGER MILEAGE

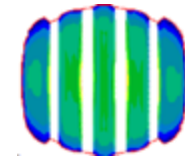
PATTERN DESIGN

- 1 Connected shoulder blocks**
Optimised pressure distribution for reduced slippages and longer mileage
- 2 High number of slots / chamfered sipes -
Wide shoulder lugs**
Harmonised pattern stiffness and increased contact area leading to a reduction in slippages and stresses for a longer mileage



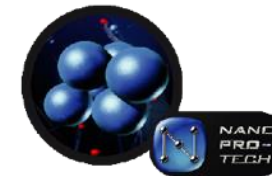
CAVITY DESIGN

- 3 Optimised proportioning of voids/ribs**
Balanced pattern stiffness for an even worn shape and longer mileage



COMPOUND DESIGN

- 4 Innovative mixing technology & NanoPro-Tech™
high silica content compound**
For a robust abrasion resistance and longer mileage



Firestone
ALWAYS DEPENDABLE





FIRESTONE ROADHAWK 2

TECHNICAL FEATURES - OPTIMISED FUEL / ENERGY CONSUMPTION

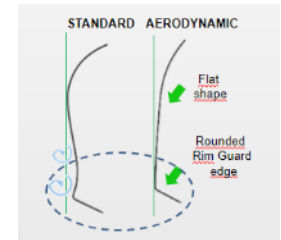
CONSTRUCTION DESIGN

- 1 Low gauge/hysteresis fabrics**
To reduce tyre weight, heat generation and RR



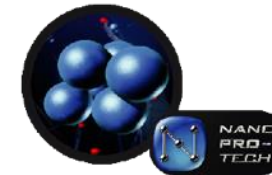
CAVITY DESIGN

- 2 Aerodynamic Rim Guard shape**
To avoid sharp curvature changes and reducing drag forces



COMPOUND DESIGN

- 3 Innovative mixing technology & NanoPro-Tech™ high silica content compound**
Low heat generation compound



Firestone
ALWAYS DEPENDABLE





FIRESTONE ROADHAWK 2

TECHNICAL FEATURES & SIDEWALL APPEARANCE

How the size looks on the tyre



How the Firestone logo and F-shield look on the tyre



Detail of ENLITEN logo



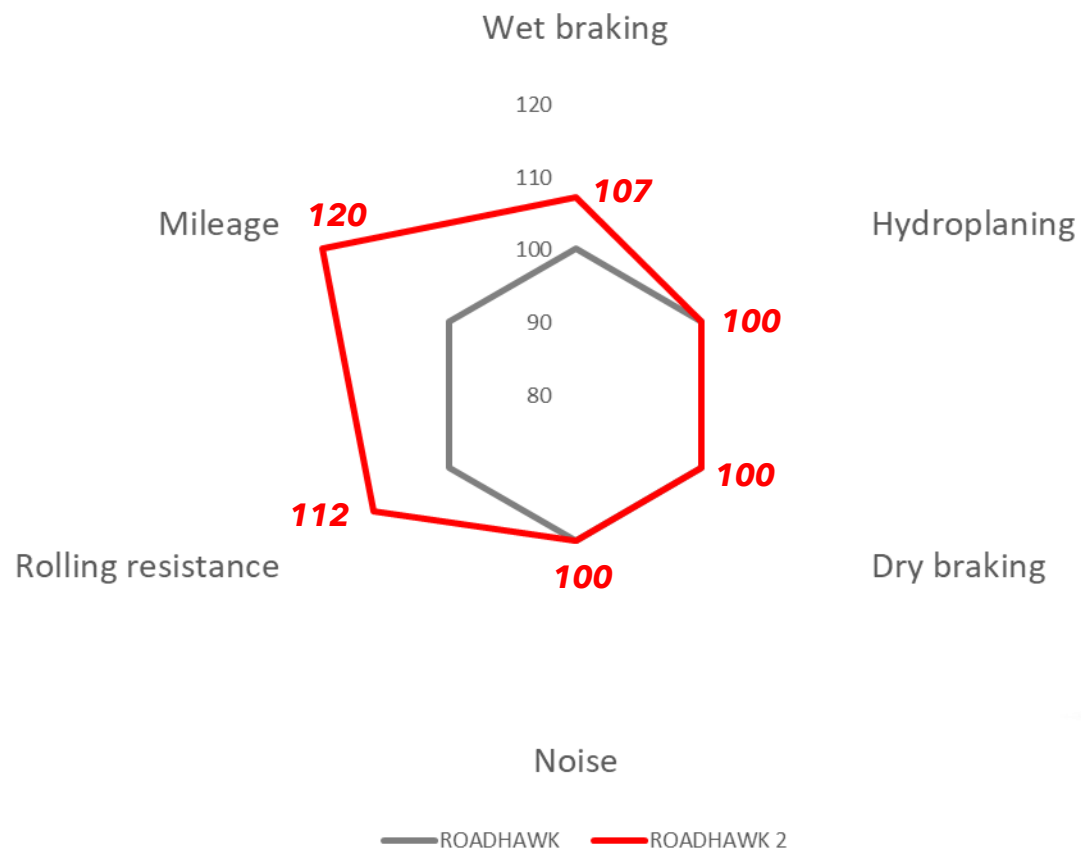


FIRESTONE ROADHAWK 2 PERFORMANCE VS FIRESTONE ROADHAWK

ROADHAWK



ROADHAWK 2





THANK YOU



Firestone
ALWAYS DEPENDABLE