



**SAILUN**  
**TIRE**



# SAILUN PASSENGER & LIGHT TRUCK TIRE CATALOG

AS | HP | UHP | SUV | HT | AT | MT | LTC | WINTER



[www.sailuntire.com](http://www.sailuntire.com)



# SAILUN GROUP

Stock Code: 601058



Ranked 15th among global tire manufacturers



Over 13,000 employees worldwide committed to meeting your needs



Our global facilities include 4 R&D centers, 10 sales centers and 7 manufacturing centers, with products sold in over 180 countries and regions

## WHY SAILUN ?

### GLOBAL INTELLIGENT MANUFACTURING

Sailun has 7 smart tire production plants located in China, Vietnam and Cambodia. These factories utilize big data cloud platforms tailored to meet tire production demand and keep pace with the organization's rapid growth. This allows for the real-time optimization and intelligent management of our manufacturing and supply chain networks in order to improve the quality and efficiency of supply chain operations.

### LEADING R&D SYSTEM

Sailun has invested heavily in setting up R&D centers in Qingdao (R&D headquarters), Vietnam, Europe and North America that enable us to better understand and meet local user needs. These centers employ cutting-edge technology that establish a sophisticated global R&D network. From market research, product planning, and tire structure design to product verification and testing throughout the entire development process, the R&D network has the capabilities to develop a full range of products specifically designed to meet market needs.

### SOPHISTICATED PRODUCT DEVELOPMENT

Sailun's product development is market oriented in order to develop products that meet customer and consumer demands. Our range of nearly 10,000 products include passenger car, truck and bus, and specialty tire lines.

### ESTABLISHED BRAND

Brand value is not only reflected in the Sailun's product quality, but also in every stage of the product life cycle. For over 20 years Sailun has cultivated a brand that has gained the trust of customers and will continue to invest in building a world-class brand to solidify its standing as an influential global tire manufacturer.

### LOCALIZED CUSTOMER SUPPORT

Sailun continues to maintain the business strategy of 'Think Global, Act Local'. Customer support channels have been established around the world including Toronto, Boston, Germany, Vietnam, Dubai, Brazil and more, and are equipped with professional staff who can provide local technical, sales, and marketing support.

# SUSTAINABLE PERFORMANCE

## What is EcoPoint<sup>3</sup> & Why choose it



A well-dispersed silica is combined with polymer solution of SBR and BR



Utilizing the advanced automated Liquid-Phase Mixing technology compared to conventional dry-mixed silica compounds



Has properties aligned with HIGHEST tire label ratings

## Why is it significant



Better filler-polymer interactions



Higher tensile strength



Minimal proportions of impurities



## Revolutionary benefits



SIGNIFICANT IMPROVEMENTS

Rolling Resistance  
Skid Resistance  
Wear Resistance



MAXIMUM ENERGY EFFICIENCY

Use less and travel further



REDUCED CARBON EMISSIONS

Uses more sustainable materials and reduces fuel consumption



LOW-CARBON DEVELOPMENT

From raw materials, manufacturing to product life cycle



# BRAND INTRODUCTION

## VISION

Become a globally recognized company in the tire industry by 2025 through the establishment of technological autonomy and intelligent manufacturing.

## TECHNOLOGICAL AUTONOMY

Sailun Group has invested heavily in setting up R&D centers in Qingdao (R&D headquarters), Vietnam, Europe and North America. These centers establish a sophisticated global R&D system which enables Sailun to better meet user needs at a local level and develop products that meet their needs. From market research, product planning, and tire structure design to product verification and testing of the entire development process, the R&D system provides the capabilities to develop a full range of products designed specifically to market requirements.



### THE TIRE AND RIM ASSOCIATION INC.

In 2016, Sailun joined the US Tire and Rim Association Inc., a significant step towards becoming an organization of international standards.

## PATENTS

Sailun has filed over 460 invention and design patent applications, and has been involved in establishing 130 international industry standards.



## STANDARDS

Sailun's products have received certification in 20 countries including China's CCC, US's DOT, Europe's ECE, Brazil's INMETRO and GCC in the Middle East. Sailun has also been awarded certification for meeting IATF16949 quality management system, ISO14001 environmental management system and OHSAS18001 occupational health and safety management system standards. Sailun's laboratory has also obtained Spain's IDIADA and Germany's TUV certification.



## PROFESSIONAL LAB TESTING

Sailun's R&D center is an industry-leading facility equipped with a professional tire laboratory, which has received CNAS, TUV, IDIADA, CCC, ISO9000, DOT, ECE, INMETRO, SONCAP and other certifications.



# BRAND INTERNATIONALIZATION

Sailun continuously pursues brand internationalization through strategic partnerships including becoming the official partner of FIA, IDC, D1GP, RDS, CDC, CDB drifting competitions and top tier football clubs such as La Liga's Valencia CF.



Sailun Tire Drift Team crowned seasonal champions in solo and drift chase runs at Japan's D1GP



Sailun Tire Sponsors Thailand's Grand Prix International

Twenty-five distributors from Asia were invited to experience the performance of Sailun's racing tires, a testament to its R&D strength and product quality.



Sailun became the Official Sleeve Partner and Official Tire Partner of Valencia CF in 2019



# PASSION DRIVES GREATNESS



# BRAND INTRODUCTION

## SUPPORTING ADVANTAGES

Sailun has supplied hundreds of tire models to over 50 original equipment manufacturers. Over 20 truck tire models have been distributed to commercial vehicles in China, including light and medium trucks, coaches and public buses. Sailun is also a strategic supplier of specialty tires to Caterpillar Inc., the world's largest construction equipment manufacturer, and other Chinese machinery manufacturers. In addition, Sailun tires have been distributed to nearly 20 mines in China and in 30 other countries.



### PASSENGER CAR OE PARTNERS



### TBR OE PARTNERS



### SPECIALTY TIRE OE PARTNERS



### SPORT SPONSORSHIPS



### SUPPLIERS



## PC

ATREZZO ECO	16
ATREZZO ELITE	18
ATREZZO ELITE EV	20
ERANGE EV ECO.SPHERE	24
ATREZZO SH406	26
ATREZZO SH408	28
INSPIRE	32
ATREZZO TOURING LS	34
ATREZZO TOURING WR	36
ATREZZO SVA1	38
ATREZZO SVR LX	40
ATREZZO SVR LX+	42
ATREZZO ZSR	44
ATREZZO ZSR2	48
ATREZZO ZSR2 EV	48
ATREZZO ZSR SUV	50
TURISMO SU58	52
TURISMO SU59	54
ATREZZO R01 SPORT	56

## ALL SEASON

ATREZZO 4SEASONS	60
ATREZZO 4SEASONS PRO	62
ATREZZO 4SEASONS PRO EV	63
COMMERCIO 4 SEASONS	64

## SUV

TERRAMAX A/T	68
TERRAMAX AT4S	70
TERRAMAX AT-M	72
TERRAMAX CVR	74
TERRAMAX HLT	76
TERRAMAX M/T	78
TERRAMAX RT	80
TERRAMAX SV301	84
TURISMO SV57	86

## LTC

COMMERCIO PRO	90
COMMERCIO VX3	92
COMMERCIO VX+	94
EXTMILE SL15	96
EXTMILE SL16	97
ENDURE SL18	98
EXTMILE SL87	100
EXTMILE SL87N	101

## WINTER

ENDURE WSL1	104
ICE BLAZER Alpine +	106
ICE BLAZER Alpine EVO1	108
ICE BLAZER Arctic	110
ICE BLAZER Arctic EVO	112
ICE BLAZER Arctic SUV	114
ICE BLAZER WST2 LT	116
ICE BLAZER WST3	118
ICE BLAZER WSTX	122
COMMERCIO ICE	126

# PG

---

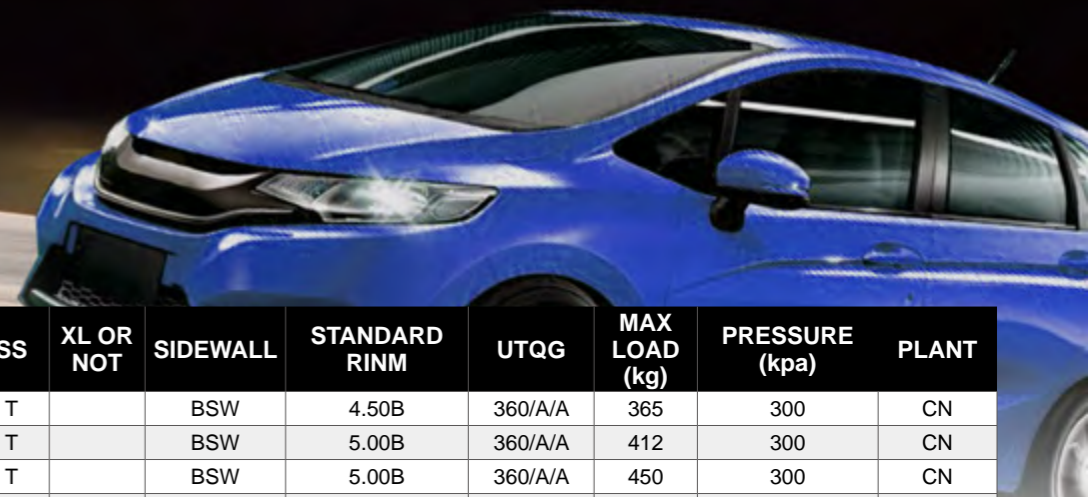
ATREZZO ECO	16
ATREZZO ELITE	18
ATREZZO ELITE EV	22
ERANGE EV ECO.SPHERE	24
ATREZZO SH406	26
ATREZZO SH408	28
INSPIRE	32
ATREZZO TOURING LS	34
ATREZZO TOURING WR	36
ATREZZO SVA1	38
ATREZZO SVR LX	40
ATREZZO SVR LX+	42
ATREZZO ZSR	44
ATREZZO ZSR2	48
ATREZZO ZSR2 EV	48
ATREZZO ZSR SUV	50
TURISMO SU58	52
TURISMO SU59	54
ATREZZO R01 SPORT	56







# ATREZZO ECO



## PERFORMANCE RATINGS:



### WET PERFORMANCE

Three wide main grooves and small lateral grooves that run through to the sidewall effectively enhance wet grip and improve hydroplaning resistance.



### FUEL ECONOMY

Adjusted the internal structure of the tire to optimize the distribution of contact stress which improves comfort and lowers rolling resistance.



⚡ Added a lightning pattern in the tread for greater aesthetics.

### EXCEPTIONAL HANDLING

Two center ribs and reinforced grooves help improve tire rigidity for excellent handling. Effectively reduces rolling resistance and improves fuel economy.

### IMPROVED GRIP

Solid large block shoulder design provides exceptional grip to ensure vehicle stability.

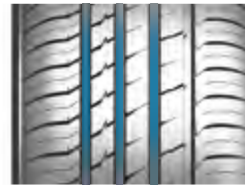
RIM	SIZE	PR	LI	SS	XL OR NOT	SIDEWALL	STANDARD RINM	UTQG	MAX LOAD (kg)	PRESSURE (kpa)	PLANT
13	155/65R13		73	T		BSW	4.50B	360/A/A	365	300	CN
13	165/65R13		77	T		BSW	5.00B	360/A/A	412	300	CN
13	175/65R13		80	T		BSW	5.00B	360/A/A	450	300	CN
13	155/70R13		75	T		BSW	4.50B	360/A/A	387	300	CN
13	165/70R13		79	T		BSW	5.00B	360/A/A	437	300	CN
13	175/70R13		82	T		BSW	5.00B	360/A/A	475	300	CN
13	185/70R13		86	T		BSW	5.50B	360/A/A	530	300	CN
13	155/80R13		79	T		BSW	4.50B	360/A/A	437	300	CN
13	165/80R13		83	T		BSW	4.50B	360/A/A	487	300	CN
14	165/55R14		72	V		BSW	5J	360/A/A	355	300	CN
14	165/60R14		75	H		BSW	5J	360/A/A	387	300	CN
14	165/60R14		75	T		BSW	5J	360/A/A	387	300	CN
14	185/60R14		82	H		BSW	5 1/2J	360/A/A	475	300	CN
14	195/60R14		86	H		BSW	6J	360/A/A	530	300	CN
14	155/65R14		75	T		BSW	4 1/2J	360/A/A	387	300	CN
14	165/65R14		79	T		BSW	5J	360/A/A	437	300	CN
14	175/65R14		82	H		BSW	5J	360/A/A	475	300	CN
14	175/65R14		82	T		BSW	5J	360/A/A	475	300	CN
14	175/65R14		86	T	XL	BSW	5J	360/A/A	530	340	CN
14	185/65R14		86	H		BSW	5 1/2J	360/A/A	530	300	CN
14	185/65R14		86	T		BSW	5 1/2J	360/A/A	530	300	CN
14	195/65R14		89	H		BSW	6J	360/A/A	580	300	CN
14	155/70R14		77	H		BSW	4 1/2J	360/A/A	412	300	CN
14	165/70R14		81	T		BSW	5J	360/A/A	462	300	CN
14	165/70R14		85	T	XL	BSW	5J	360/A/A	515	340	CN
14	175/70R14		84	T		BSW	5J	360/A/A	500	300	CN
14	175/70R14		88	T	XL	BSW	5J	360/A/A	560	340	CN
14	185/70R14		88	H		BSW	5 1/2J	360/A/A	560	300	CN
14	185/70R14		88	T		BSW	5 1/2J	360/A/A	560	300	CN
14	195/70R14		91	H		BSW	6J	360/A/A	615	300	CN
14	205/70R14		95	H		BSW	6J	360/A/A	690	300	CN
14	175/80R14		88	T		BSW	5J	360/A/A	560	300	CN
15	165/50R15		72	V		BSW	5J	360/A/A	355	300	CN
15	165/55R15		75	V		BSW	5J	360/A/A	387	300	CN
15	175/55R15		77	T		BSW	5 1/2J	360/A/A	412	300	CN
15	155/60R15		74	T		BSW	4 1/2J	360/A/A	375	300	CN
15	165/60R15		77	H		BSW	5 J	360/A/A	412	300	CN
15	175/60R15		81	H		BSW	5J	360/A/A	462	300	CN
15	175/60R15		81	V		BSW	5J	360/A/A	462	300	CN
15	145/65R15		72	T		BSW	4 1/2J	360/A/A	355	300	CN
15	165/65R15		81	H		BSW	5J	360/A/A	462	300	CN
15	165/65R15		81	T		BSW	5J	360/A/A	462	300	CN
15	175/65R15		84	H		BSW	5J	360/A/A	500	300	CN
15	175/65R15		88	H	XL	BSW	5J	360/A/A	560	340	CN
15	175/65R15		88	T	XL	BSW	5J	360/A/A	560	340	CN



# ATREZZO ELITE



## PERFORMANCE RATINGS:



### WET PERFORMANCE

Four wide main grooves and tread sipe design effectively drain water to improve wet grip.



### ASYMMETRIC TREAD

Asymmetric tread design whose inner tread elements help provide efficient drainage, and the outer tread elements offer exceptional handling to obtain optimal driving performance.

A strip within the outer groove not only makes the outer block more robust, but also improves the handling performance.



Simple staggered layer groove design makes the pattern more dynamic.

RIM	SIZE	PR	LI	SS	XL OR NOT	SIDEWALL	STANDARD RINM	UTQG	MAX LOAD (kg)	PRESSURE (kpa)	PLANT
14	185/55R14		80	H		BSW	6J	360/A/A	450	300	CN
15	195/50R15		82	H		BSW	6J	360/A/A	475	300	CN
15	195/50R15		82	V		BSW	6J	360/A/A	475	300	CN
15	205/50R15		86	V		BSW	6 1/2J	360/A/A	530	300	CN
15	185/55R15		82	H		BSW	6J	360/A/A	475	300	CN
15	185/55R15		82	V		BSW	6J	360/A/A	475	300	CN
15	195/55R15		85	H		BSW	6J	360/A/A	515	300	CN
15	195/55R15		85	V		BSW	6J	360/A/A	515	300	CN
15	205/55R15		88	V		BSW	6 1/2J	360/A/A	560	300	CN
15	185/60R15		84	H		BSW	5 1/2J	360/A/A	500	300	CN
15	185/60R15		84	T		BSW	5 1/2J	360/A/A	500	300	CN
15	185/60R15		88	H	XL	BSW	5 1/2J	360/A/A	560	340	CN
15	185/60R15		88	T	XL	BSW	5 1/2J	360/A/A	560	340	CN
15	195/60R15		88	H		BSW	6J	360/A/A	560	300	CN
15	195/60R15		88	V		BSW	6J	360/A/A	560	300	CN
15	205/60R15		91	H		BSW	6J	360/A/A	615	300	CN
15	205/60R15		91	V		BSW	6J	360/A/A	615	300	CN
15	205/60R15		95	H	XL	BSW	6J	360/A/A	690	340	CN
15	225/60R15		96	V		BSW	6 1/2J	360/A/A	710	300	CN
15	185/65R15		88	H		BSW	5 1/2J	360/A/A	560	300	CN
15	185/65R15		88	T		BSW	5 1/2J	360/A/A	560	300	CN
15	185/65R15		92	T	XL	BSW	5 1/2J	360/A/A	630	340	CN
15	195/65R15		91	H		BSW	6J	360/A/A	615	300	CN
15	195/65R15		91	T		BSW	6J	360/A/A	615	300	CN
15	195/65R15		91	V		BSW	6J	360/A/A	615	300	CN
15	195/65R15		95	H	XL	BSW	6J	360/A/A	690	340	CN
15	205/65R15		94	H		BSW	6J	360/A/A	670	300	CN
15	205/65R15		94	V		BSW	6J	360/A/A	670	300	CN
15	205/65R15		99	T	XL	BSW	6J	360/A/A	775	340	CN
15	215/65R15		100	H	XL	BSW	6 1/2J	360/A/A	800	340	CN
15	215/65R15		96	H		BSW	6 1/2J	360/A/A	710	300	CN
15	215/65R15		96	T		BSW	6 1/2J	360/A/A	710	300	CN



HIGH PERFORMANCE TIRE

# ATREZZO ELITE



## PERFORMANCE RATINGS:



RIM	SIZE	PR	LI	SS	XL OR NOT	SIDEWALL	STANDARD RINM	UTQG	MAX LOAD (kg)	PRESSURE (kpa)	PLANT
16	205/45R16		87	W	XL	BSW	7 J	360/A/A	545	340	CN
16	215/45R16		90	V	XL	BSW	7 J	360/A/A	600	340	CN
16	185/50R16		81	V		BSW	6J	360/A/A	462	300	CN
16	195/50R16		84	H		BSW	6J	360/A/A	500	300	CN
16	195/50R16		84	V		BSW	6J	360/A/A	500	300	CN
16	195/50R16		88	V	XL	BSW	6J	360/A/A	560	340	CN
16	205/50R16		87	V		BSW	6 1/2J	360/A/A	545	300	CN
16	225/50R16		96	W	XL	BSW	7J	360/A/A	710	340	CN
16	185/55R16		83	H		BSW	6J	360/A/A	487	300	CN
16	185/55R16		83	V		BSW	6J	360/A/A	487	300	CN
16	185/55R16		87	V	XL	BSW	6J	360/A/A	545	340	CN
16	195/55R16		87	H		BSW	6J	360/A/A	545	300	CN
16	195/55R16		87	V		BSW	6J	360/A/A	545	300	CN
16	195/55R16		91	V	XL	BSW	6J	360/A/A	615	340	CN
16	205/55R16		91	H		BSW	6 1/2J	360/A/A	615	300	CN
16	205/55R16		91	V		BSW	6 1/2J	360/A/A	615	300	CN
16	205/55R16		91	W		BSW	6 1/2J	360/A/A	615	300	CN
16	205/55R16		94	V	XL	BSW	6 1/2J	360/A/A	670	340	CN
16	215/55R16		97	H	XL	BSW	7J	360/A/A	730	340	CN
16	215/55R16		97	W	XL	BSW	7J	360/A/A	730	340	CN
16	225/55R16		99	V	XL	BSW	7J	360/A/A	775	340	CN
16	195/60R16		89	H		BSW	6J	360/A/A	580	300	CN
16	195/60R16		89	V		BSW	6J	360/A/A	580	300	CN
16	205/60R16		92	H		BSW	6J	360/A/A	630	300	CN
16	205/60R16		92	V		BSW	6J	360/A/A	630	300	CN
16	205/60R16		96	H	XL	BSW	6J	360/A/A	710	340	CN
16	205/60R16		96	V	XL	BSW	6J	360/A/A	710	340	CN

RIM	SIZE	PR	LI	SS	XL OR NOT	SIDEWALL	STANDARD RINM	UTQG	MAX LOAD (kg)	PRESSURE (kpa)	PLANT
16	215/60R16		95	H		BSW	6 1/2J	360/A/A	690	300	CN
16	215/60R16		95	V		BSW	6 1/2J	360/A/A	690	300	CN
16	215/60R16		99	H	XL	BSW	6 1/2J	360/A/A	775	340	CN
16	215/60R16		99	T	XL	BSW	6 1/2J	360/A/A	775	340	CN
16	215/60R16		99	V	XL	BSW	6 1/2J	360/A/A	775	340	CN
16	225/60R16		102	V	XL	BSW	6 1/2J	360/A/A	850	340	CN
16	225/60R16		98	V		BSW	6 1/2J	360/A/A	750	300	CN
16	225/60R16		98	W		BSW	6 1/2J	360/A/A	750	300	CN
16	235/60R16		100	W		BSW	7J	360/A/A	800	300	CN
16	195/65R16		92	V		BSW	6J	360/A/A	630	300	CN
16	205/65R16		95	V		BSW	6J	360/A/A	690	300	CN
16	215/65R16		102	V	XL	BSW	6 1/2J	360/A/A	850	340	CN
16	215/65R16		98	H		BSW	6 1/2J	360/A/A	750	300	CN
16	225/65R16		100	V		BSW	6 1/2J	360/A/A	800	300	CN
17	225/50R17		94	V		BSW	7J	360/A/A	670	300	CN
17	205/55R17		95	V	XL	BSW	6 1/2J	360/A/A	690	340	CN
17	215/55R17		94	V		BSW	7J	360/A/A	670	300	CN
17	235/55R17		103	V	XL	BSW	7 1/2J	360/A/A	875	340	CN
17	235/55R17		99	V		BSW	7 1/2J	360/A/A	775	300	CN
17	215/60R17		96	V		BSW	6 1/2J	360/A/A	710	300	CN
17	225/60R17		99	V		BSW	6 1/2J	360/A/A	775	300	CN
17	235/60R17		102	V		BSW	7J	360/A/A	850	300	CN
17	215/65R17		99	V		BSW	6 1/2J	360/A/A	775	300	CN
17	225/65R17		102	V		BSW	6 1/2J	360/A/A	850	300	CN
17	235/65R17		108	H	XL	BSW	7J	360/A/A	1000	340	CN
18	215/55R18		99	V	XL	BSW	7J	360/A/A	775	340	CN
18	225/60R18		104	W	XL	BSW	6 1/2J	360/A/A	900	340	CN



HIGH PERFORMANCE TIRE



# ATREZZO ELITE | EV



## PERFORMANCE RATINGS



The **ELITE EV** is the all new EV specific car and MPV tire from Sailun. Through the use of the revolutionary technology EcoPoint<sup>3</sup>, ELITE EV offers exceptional energy efficiency for EVs, a tread designed for an exceptionally quiet drive, and improved driving safety.



### ENERGY SAVINGS

Equipped with the proprietary EcoPoint<sup>3</sup> technology compound and a meticulously designed tread contour design this EV specific tire effectively reduces overall rolling resistance that helps to reduce range anxiety and ensure longer mileage.



### DRIVING COMFORT

The tread contour improves the tire's contact footprint for a more even, stable drive while the EcoPoint<sup>3</sup> tread compound absorbs tire-to-ground reverberations to ensure exceptional driving comfort.

### NOISE REDUCTION

The soft tread, optimized tread pitch design, and closed shoulder effectively reduce noise vibrations.

### SAFETY

The wide tire footprint, varied tread blocks and sturdy tread compound effectively improve braking and handling performance for overall better driving safety.

RIM	SIZE	PR	LI	SS	XL OR NOT	SIDEWALL	STANDARD RINM	UTQG	MAX LOAD (kg)	PRESSURE (kpa)	PLANT
16	205/55R16		94	V	XL	BSW		500/A/A	670	340	CN
16	195/60R16		89	H		BSW	6J	500/A/A	580	300	CN
16	205/60R16		96	V	XL	BSW		500/A/A	710	340	CN
17	215/45R17		91	W	XL	BSW		500/A/A	615	340	CN
17	225/45R17		94	W	XL	BSW		500/A/A	670	340	CN
17	205/50R17		93	W	XL	BSW		500/A/A	650	340	CN
17	215/50R17		95	W	XL	BSW		500/A/A	690	340	CN
17	215/55R17		98	W	XL	BSW		500/A/A	750	340	CN
17	225/55R17		101	W	XL	BSW		500/A/A	825	340	CN
17	215/60R17		96	H		BSW		500/A/A	710	300	CN
18	215/55R18		99	V	XL	BSW		500/A/A	775	340	CN
18	235/55R18		104	V	XL	BSW		500/A/A	900	340	CN



ULTRA HIGH PERFORMANCE TIRE



# ERANGE | EV



## PERFORMANCE RATINGS:



## ENGINEERED FOR ELECTRIC VEHICLES



ERANGE EV tires are designed and dedicated to help get the best performance out of your electric vehicle to help increase overall range on a single charge. ERANGE tires use proprietary EcoPoint3 liquid phase mixing technology to not only improve the EV driving experience, but also last longer, perform better, filter out road noise and reduce rolling resistance to avoid 'range anxiety' – with ERANGE, you're in charge.

### INCREASED LOAD-BEARING CAPACITY

ERANGE EV tires feature increased load-bearing capacity to account for the extra weight of vehicle batteries while also utilizing a reinforced sidewall design for crisp handling and cornering compared to traditional tires.

### ADVANCED TREAD PATTERNS AND COMPOUNDS

ERANGE EV tires use advanced tread patterns and specially formulated rubber compounds to handle the instant torque of electric vehicles and deliver dynamic driving performance in various road conditions.

### LONG-LASTING TIRE LIFE

ERANGE EV tires are manufactured with liquid phase mixing EcoPoint3 technology to deliver the right balance of long-lasting tire life without sacrificing grip or traction on various wet and dry road surfaces.

### QUIET, COMFORT AND SAFE RIDE

ERANGE EV tires use proven 'SilentTread™' technology and a variable pitch sequence for a quiet, comfortable, and safe ride backed by proven lab and road testing to meet the highest of standards.



RIM	SIZE	PR	LI	SS	XL OR NOT	SIDEWALL	STANDARD RINM	UTQG	MAX LOAD (kg)	PRESSURE (kpa)	PLANT
18	235/45ZR18		98	W	XL	BSW	8J	600/A/A	750	340	VN
15	185/65R15		92	T	XL	BSW	5 1/2J	600/A/A	630	340	VN
15	195/65R15		95	H	XL	BSW	6J	600/A/A	690	340	VN
16	205/55R16		94	H	XL	BSW	6 1/2J	600/A/A	670	340	VN
16	205/60R16		96	H	XL	BSW	6J	600/A/A	710	340	VN
17	215/45R17		91	V	XL	BSW	7J	600/A/A	615	340	VN
17	215/50R17		95	V	XL	BSW	7J	600/A/A	690	340	VN
17	225/50R17		98	V	XL	BSW	7J	600/A/A	750	340	VN
17	215/55R17		98	V	XL	BSW	7J	600/A/A	750	340	VN
17	225/55R17		101	V	XL	BSW	7J	600/A/A	825	340	VN
17	225/65R17		106	H	XL	BSW	6 1/2J	600/A/A	950	340	VN
17	225/65R17		106	V	XL	BSW	6 1/2J	600/A/A	950	340	VN
18	235/45ZR18		98	W	XL	BSW	8J	600/A/A	750	340	VN
18	235/55ZR18		104	W	XL	BSW	7 1/2J	600/A/A	900	340	VN
18	235/55ZR18		104	Y	XL	BSW	7 1/2J	600/A/A	900	340	VN
18	245/60R18		109	H	XL	BSW	7J	600/A/A	1030	340	VN
18	235/65R18		110	H	XL	BSW	7J	600/A/A	1060	340	VN
18	235/65R18		110	V	XL	BSW	7J	600/A/A	1060	340	VN
19	235/40ZR19		96	W	XL	BSW	8 1/2J	600/A/A	710	340	VN
19	245/40ZR19		98	Y	XL	BSW	8 1/2J	600/A/A	750	340	VN
19	245/45ZR19		102	W	XL	BSW	8J	600/A/A	850	340	VN
19	255/45ZR19		104	W	XL	BSW	8 1/2J	600/A/A	900	340	VN
19	245/55R19		107	H	XL	BSW	7 1/2J	600/A/A	975	340	VN
20	235/35ZR20		92	Y	XL	BSW	8 1/2J	600/A/A	630	340	VN
20	245/40ZR20		99	Y	XL	BSW	8 1/2J	600/A/A	775	340	VN
20	255/40ZR20		101	W	XL	BSW	9J	600/A/A	825	340	VN
20	255/45ZR20		105	Y	XL	BSW	8 1/2J	600/A/A	925	340	VN
20	265/45ZR20		108	Y	XL	BSW	9J	600/A/A	1000	340	VN
20	275/45ZR20		110	Y	XL	BSW	9J	600/A/A	1060	340	VN
20	235/55ZR20		105	W	XL	BSW	7 1/2J	600/A/A	925	340	VN
21	245/35ZR21		96	Y	XL	BSW	8 1/2J	600/A/A	710	340	VN
21	255/35ZR21		98	W	XL	BSW	9J	600/A/A	750	340	VN
21	265/35ZR21		101	Y	XL	BSW	9 1/2J	600/A/A	825	340	VN
21	275/35ZR21		103	W	XL	BSW	9 1/2J	600/A/A	875	340	VN
22	265/35ZR22		102	W	XL	BSW	9 1/2J	600/A/A	850	340	VN
22	285/35ZR22		106	Y	XL	BSW	10J	600/A/A	950	340	VN



ALL-SEASON PERFORMANCE TIRE

# ATREZZO SH406



## PERFORMANCE RATINGS:



### WET PERFORMANCE

Tread grooves efficiently drain water for improved high speed stability.



### OVERALL PERFORMANCE

Reinforced shoulder design improves driving stability and promotes even wear to extend tread life.



### DRIVING COMFORT

Tread sipes effectively reduce noise emissions and disperse heat.

RIM	SIZE	PR	LI	SS	XL OR NOT	SIDEWALL	STANDARD RINM	UTQG	MAX LOAD (kg)	PRESSURE (kpa)	PLANT
12	145/70R12		69	S		BSW	4.50B	460/A/B	325	300	VN
12	155/70R12		73	T		BSW	4.50B	460/A/B	365	300	VN
12	165/70R12		77	T		BSW	5.00B	460/A/B	412	300	CN
12	165/70R12		77	T		RWL	5.00B	460/A/B	412	300	CN
13	165/60R13		73	H		BSW	5.00B	420/A/A	365	300	VN
13	155/65R13		73	T		BSW	4.50B	460/A/B	365	300	VN
13	165/70R13		79	T		BSW	5.00B	460/A/B	437	300	VN
13	175/70R13		82	T		BSW	5.00B	460/A/B	475	300	VN
13	185/70R13		86	T		BSW	5.50B	460/A/B	530	300	VN
13	155/80R13		79	T		BSW	4.50B	460/A/B	437	300	VN
13	165/80R13		83	T		BSW	4.50B	460/A/B	487	300	VN
14	155/55R14		69	V		BSW	5J	420/A/A	325	300	VN
14	165/55R14		72	V		BSW	5J	420/A/A	355	300	VN
14	165/60R14		75	H		BSW	5J	420/A/A	387	300	VN
14	185/60R14		82	H		BSW	5 1/2J	420/A/A	475	300	VN
14	195/60R14		86	H		BSW	6J	420/A/A	530	300	VN
14	165/65R14		79	T		BSW	5J	460/A/B	437	300	VN
14	175/65R14		82	H		BSW	5J	420/A/A	475	300	VN

RIM	SIZE	PR	LI	SS	XL OR NOT	SIDEWALL	STANDARD RINM	UTQG	MAX LOAD (kg)	PRESSURE (kpa)	PLANT
14	185/65R14		86	H		BSW	5 1/2J	420/A/A	530	300	VN
14	175/70R14		84	T		BSW	5J	460/A/B	500	300	VN
14	185/70R14		88	H		BSW	5 1/2J	460/A/B	560	300	VN
14	185/70R14		88	T		BSW	5 1/2J	460/A/B	560	300	VN
14	195/70R14		91	T		BSW	6J	460/A/B	615	300	VN
14	205/70R14		95	T		BSW	6J	460/A/B	690	300	VN
15	165/50R15		72	V		BSW	5J	420/A/A	355	300	VN
15	175/50R15		75	V		BSW	5 1/2J	420/A/A	387	300	VN
15	195/50R15		82	H		BSW	6J	420/A/A	475	300	VN
15	165/55R15		75	V		BSW	5J	420/A/A	387	300	VN
15	185/55R15		82	H		BSW	6J	420/A/A	475	300	VN
15	195/55R15		85	V		BSW	6J	420/A/A	515	300	VN
15	185/60R15		84	H		BSW	5 1/2J	420/A/A	500	300	VN
15	195/60R15		88	H		BSW	6J	420/A/A	560	300	VN
15	205/60R15		91	H		BSW	6J	420/A/A	615	300	VN
15	215/60R15		94	H		BSW	6 1/2J	420/A/A	670	300	VN
15	175/65R15		84	H		BSW	5J	420/A/A	500	300	VN
15	185/65R15		88	H		BSW	5 1/2J	420/A/A	560	300	VN
15	195/65R15		91	H		BSW	6J	420/A/A	615	300	VN
15	205/65R15		94	H		BSW	6J	420/A/A	670	300	VN
15	215/65R15		96	H		BSW	6 1/2J	420/A/A	710	300	VN
15	205/70R15		96	T		BSW	6J	460/A/B	710	300	VN
15	215/70R15		98	T		BSW	6 1/2J	460/A/B	750	300	VN
16	195/50R16		84	V		BSW	6J	420/A/A	500	300	VN
16	205/50R16		87	V		BSW	6 1/2J	420/A/A	545	300	VN
16	225/50R16		92	H		BSW	7J	420/A/A	630	300	VN
16	195/55R16		87	H		BSW	6J	420/A/A	545	300	VN
16	205/55R16		91	V		BSW	6 1/2J	420/A/A	615	300	VN
16	215/55R16		97	H	XL	BSW	7J	420/A/A	730	340	VN
16	225/55R16		99	H	XL	BSW	7J	420/A/A	775	340	VN
16	205/60R16		92	V		BSW	6J	420/A/A	630	300	VN
16	215/60R16		95	V		BSW	6 1/2J	420/A/A	690	300	VN
16	225/60R16		98	H		BSW	6 1/2J	420/A/A	750	300	VN
16	205/65R16		95	H		BSW	6J	420/A/A	690	300	VN
16	215/65R16		98	T		BSW	6 1/2J	420/A/A	750	300	VN
16	225/65R16		100	T		BSW	6 1/2J	460/A/B	800	300	VN
16	235/65R16		103	T		BSW	7J	460/A/B	875	300	VN
17	225/45ZR17		94	W	XL	BSW	7 1/2J	380/A/A	670	340	VN
17	235/45R17		94	H		BSW	8J	420/A/A	670	300	VN
17	225/50R17		94	V		BSW	7J	420/A/A	670	300	VN
17	215/55R17		94	V		BSW	7J	420/A/A	670	300	VN
17	225/55R17		97	V		BSW	7J	420/A/A	730	300	VN
17	235/55R17		99	H		BSW	7 1/2J	420/A/A	775	300	VN
17	215/60R17		96	T		BSW	6 1/2J	460/A/B	710	300	VN
17	225/60R17		99	T		BSW	6 1/2J	460/A/B	775	300	VN
17	215/65R17		99	T		BSW	6 1/2J	460/A/B	775	300	VN
17	225/65R17		102	T		BSW	6 1/2J	460/A/B	850	300	VN
18	225/50R18		95	H		BSW	7J	420/A/A	690	300	VN
18	235/50R18		97	H		BSW	7 1/2J	420/A/A	730	300	VN
18	235/55R18		100	V		BSW	7 1/2J	420/A/A	800	300	VN
18	235/60R18		103	H		BSW	7J	420/A/A	875	300	VN



ALL-SEASON PERFORMANCE TIRE

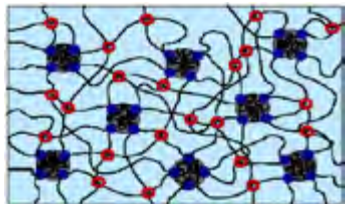
# ATREZZO SH408



## PERFORMANCE RATINGS

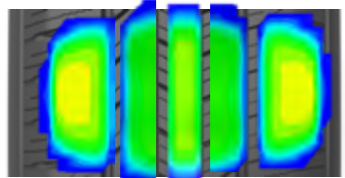


The **SH408** is the next generation of the all-season SH406. This pattern builds upon the success of the previous generation's all-weather handling, grip, durability, and smooth quiet ride. The next generation of performance tire value.



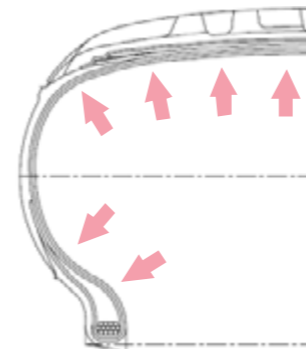
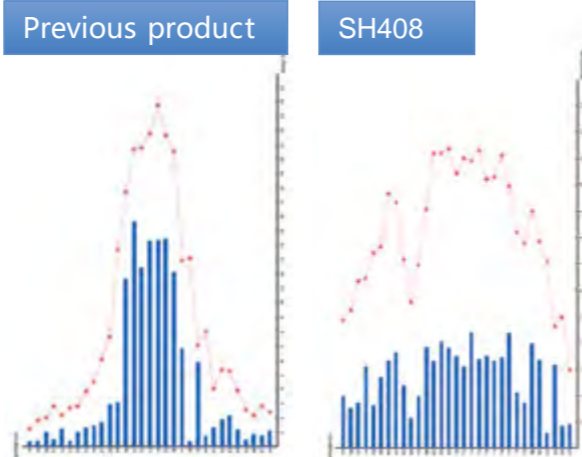
### LONG MILEAGE

The special all-weather tread compound is designed to offer exceptional wear and cut resistance while the upgraded tire contour and varying tread block angles are optimized to promote even wear. This combination of designs provides overall extended mileage.



### DRIVING COMFORT

Varied pitch tread blocks are optimized with 5 variations and are equipped with sound-dampening sipes that improve handling and reduce noise emissions.



### HANDLING STABILITY

The wide central ribs and improved contour design improve handling stability by evenly distributing ground pressure and increasing the tire footprint.

### ALL-WEATHER PERFORMANCE

The tread rubber compound is durable and designed to perform in a full range of temperatures while tread sipes help to break through water film for improved braking performance.





ALL-SEASON PERFORMANCE TIRE

# ATREZZO SH408



## PERFORMANCE RATINGS



RIM	SIZE	PR	LI	SS	XL OR NOT	SIDEWALL	STANDARD RINM	UTQG	MAX LOAD (kg)	PRESSURE (kpa)	PLANT
14	185/60R14		82	H		BSW	5 1/2J	420/A/A	475	300	KH
14	175/65R14		82	H		BSW	5J	420/A/A	475	300	KH
14	185/65R14		86	H		BSW	5 1/2J	420/A/A	530	300	KH
14	175/70R14		84	T		BSW	5J	460/A/B	500	300	KH
14	185/70R14		88	T		BSW	5 1/2J	460/A/B	560	300	KH
14	195/70R14		91	T		BSW	6J	460/A/B	615	300	KH
14	205/70R14		95	T		BSW	6J	460/A/B	690	300	KH
15	195/50R15		82	H		BSW	6J	420/A/A	475	300	KH
15	185/55R15		82	H		BSW	6J	420/A/A	475	300	KH
15	195/55R15		85	V		BSW	6J	420/A/A	515	300	KH
15	185/60R15		84	H		BSW	5 1/2J	420/A/A	500	300	KH
15	195/60R15		88	H		BSW	6J	420/A/A	560	300	KH
15	205/60R15		91	H		BSW	6J	420/A/A	615	300	KH
15	215/60R15		94	H		BSW	6 1/2J	420/A/A	670	300	KH
15	175/65R15		84	H		BSW	5J	420/A/A	500	300	KH
15	185/65R15		88	H		BSW	5 1/2J	420/A/A	560	300	KH
15	195/65R15		91	H		BSW	6J	420/A/A	615	300	KH
15	205/65R15		94	H		BSW	6J	420/A/A	670	300	KH
15	215/65R15		96	H		BSW	6 1/2J	420/A/A	710	300	KH
15	205/70R15		96	T		BSW	6J	460/A/B	710	300	KH
15	215/70R15		98	T		BSW	6 1/2J	460/A/B	750	300	KH
16	195/50R16		84	V		BSW	6J	420/A/A	500	300	KH
16	205/50R16		87	V		BSW	6 1/2J	420/A/A	545	300	KH
16	225/50R16		92	H		BSW	7J	420/A/A	630	300	KH
16	195/55R16		87	H		BSW	6J	420/A/A	545	300	KH
16	205/55R16		91	V		BSW	6 1/2J	420/A/A	615	300	KH
16	215/55R16		97	H	XL	BSW	7J	420/A/A	730	340	KH
16	225/55R16		99	H	XL	BSW	7J	420/A/A	775	340	KH
16	205/60R16		92	H		BSW	6J	420/A/A	630	300	KH

RIM	SIZE	PR	LI	SS	XL OR NOT	SIDEWALL	STANDARD RINM	UTQG	MAX LOAD (kg)	PRESSURE (kpa)	PLANT
16	215/60R16		95	V		BSW	6 1/2J	420/A/A	690	300	KH
16	225/60R16		98	H		BSW	6 1/2J	420/A/A	750	300	KH
16	235/60R16		100	H		BSW	7J	420/A/A	800	300	KH
16	205/65R16		95	H		BSW	6J	420/A/A	690	300	KH
16	215/65R16		98	T		BSW	6 1/2J	460/A/B	750	300	KH
16	225/65R16		100	T		BSW	6 1/2J	460/A/B	800	300	KH
16	235/65R16		103	T		BSW	7J	460/A/B	875	300	KH
17	215/45R17		87	H		BSW	7J	420/A/A	545	300	KH
17	225/45R17		91	H		BSW	7 1/2J	420/A/A	615	300	KH
17	235/45R17		94	H		BSW	8J	420/A/A	670	300	KH
17	205/50R17		93	V	XL	BSW	6 1/2J	420/A/A	650	340	KH
17	215/50R17		95	V	XL	BSW	7J	420/A/A	690	340	KH
17	225/50R17		94	V		BSW	7J	420/A/A	670	300	KH
17	215/55R17		94	V		BSW	7J	420/A/A	670	300	KH
17	225/55R17		97	V		BSW	7J	420/A/A	730	300	KH
17	235/55R17		99	H		BSW	7 1/2J	420/A/A	775	300	KH
17	215/60R17		96	T		BSW	6 1/2J	460/A/B	710	300	KH
17	225/60R17		99	H		BSW	6 1/2J	420/A/A	775	300	KH
17	215/65R17		99	H		BSW	6 1/2J	420/A/A	775	300	KH
17	225/65R17		102	H		BSW	6 1/2J	420/A/A	850	300	KH
18	235/45R18		94	V		BSW	8J	420/A/A	670	300	KH
18	225/50R18		95	H		BSW	7J	420/A/A	690	300	KH
18	235/50R18		97	H		BSW	7 1/2J	420/A/A	730	300	KH
18	215/55R18		95	V		BSW	7J	420/A/A	690	300	KH
18	235/55R18		100	V		BSW	7 1/2J	420/A/A	800	300	KH
18	225/60R18		100	H		BSW	6 1/2J	420/A/A	800	300	KH
18	235/60R18		103	H		BSW	7J	420/A/A	875	300	KH
19	235/40R19		96	V	XL	BSW	8 1/2J	420/A/A	710	340	KH
19	245/40R19		98	V	XL	BSW	8 1/2J	420/A/A	750	340	KH
19	225/55R19		99	V		BSW	7J	420/A/A	775	300	KH





ALL-SEASON PERFORMANCE TIRE

# INSPIRE



## PERFORMANCE RATINGS:



The **INSPIRE** is the ultimate all-season touring tire with balanced levels of premium comfort and advanced performance with a lengthy list of new design features and technology available in 48 popular replacement tire sizes.



### ADVANCED RUBBER COMPOUND

Proprietary SertaGrip™ compound increases traction, control and longevity in wet and dry conditions.

### ALL-NEW TREAD PATTERN

SilentTread™ pattern uses staggered tuning technology and variable pitch sequence for quiet, comfort and safety.

### 3D MULTI-SIPE TECHNOLOGY

Expands and expels substances for confident performance that regenerates with tire wear.

RIM	SIZE	PR	LI	SS	XL OR NOT	SIDEWALL	STANDARD RINM	UTQG	MAX LOAD (kg)	PRESSURE (kpa)	PLANT
14	175/65R14		82	H		BSW	5J	520/A/A	475	300	KH
14	185/65R14		86	H		BSW	5 1/2J	520/A/A	530	300	KH
14	175/70R14		84	T		BSW	5J	520/A/A	500	300	KH
14	195/70R14		91	T		BSW	6J	520/A/A	615	300	KH
15	185/55R15		82	H		BSW	6J	520/A/A	475	300	KH
15	195/55R15		85	V		BSW	6J	520/A/A	515	300	KH
15	185/60R15		84	H		BSW	5 1/2J	520/A/A	500	300	KH
15	195/60R15		88	H		BSW	6J	520/A/A	560	300	KH
15	175/65R15		84	H		BSW	5J	520/A/A	500	300	KH
15	185/65R15		88	H		BSW	5 1/2J	520/A/A	560	300	KH
15	195/65R15		91	H		BSW	6J	520/A/A	615	300	CN/KH
15	205/65R15		94	H		BSW	6J	520/A/A	670	300	KH

RIM	SIZE	PR	LI	SS	XL OR NOT	SIDEWALL	STANDARD RINM	UTQG	MAX LOAD (kg)	PRESSURE (kpa)	PLANT
15	205/70R15		96	T		BSW	6J	520/A/A	710	300	KH
15	215/70R15		98	T		BSW	6 1/2J	520/A/A	750	300	KH
16	195/50R16		84	V		BSW	6J	520/A/A	500	300	KH
16	205/50R16		87	V		BSW	6 1/2J	520/A/A	545	300	KH
16	195/55R16		87	H		BSW	6J	520/A/A	545	300	KH
16	205/55R16		91	V		BSW	6 1/2J	520/A/A	615	300	CN/KH
16	215/55R16		93	H		BSW	7J	520/A/A	650	300	KH
16	225/55R16		95	H		BSW	7J	520/A/A	690	300	KH
16	205/60R16		92	V		BSW	6J	520/A/A	630	300	KH
16	215/60R16		95	V		BSW	6 1/2J	520/A/A	690	300	CN/KH
16	225/60R16		98	H		BSW	6 1/2J	520/A/A	750	300	KH
16	235/60R16		100	V		BSW	7J	520/A/A	800	300	KH
16	205/65R16		95	H		BSW	6J	520/A/A	690	300	CN/KH
16	215/65R16		98	T		BSW	6 1/2J	520/A/A	750	300	KH
16	225/65R16		100	T		BSW	6 1/2J	520/A/A	800	300	KH
16	235/65R16		103	T		BSW	7J	520/A/A	875	300	KH
17	245/40R17		91	V		BSW	8 1/2J	520/A/A	615	300	KH
17	215/45R17		87	W		BSW	7J	520/A/A	545	300	CN/KH
17	225/45R17		91	V		BSW	7 1/2J	520/A/A	615	300	KH
17	235/45R17		97	W	XL	BSW	8J	520/A/A	730	340	KH
17	245/45R17		99	W	XL	BSW	8J	520/A/A	775	340	KH
17	205/50R17		93	V	XL	BSW	6 1/2J	520/A/A	650	340	KH
17	215/50R17		95	V	XL	BSW	7J	520/A/A	690	340	KH
17	225/50R17		94	V		BSW	7J	520/A/A	670	300	KH
17	235/50R17		96	V		BSW	7 1/2J	520/A/A	710	300	KH
17	215/55R17		94	V		BSW	7J	520/A/A	670	300	CN/KH
17	225/55R17		97	V		BSW	7J	520/A/A	730	300	CN/KH
17	235/55R17		99	V		BSW	7 1/2J	520/A/A	775	300	KH
17	215/60R17		96	T		BSW	6 1/2J	520/A/A	710	300	KH
17	225/60R17		99	T		BSW	6 1/2J	520/A/A	775	300	KH
17	215/65R17		99	T		BSW	6 1/2J	520/A/A	775	300	KH
17	225/65R17		102	T		BSW	6 1/2J	520/A/A	850	300	KH
18	225/40R18		92	W	XL	BSW	8J	520/A/A	630	340	CN/KH
18	245/40R18		97	W	XL	BSW	8 1/2J	520/A/A	730	340	KH
18	225/45R18		95	W	XL	BSW	7 1/2J	520/A/A	690	340	CN/KH
18	235/45R18		94	V		BSW	8J	520/A/A	670	300	KH
18	245/45R18		100	W	XL	BSW	8J	520/A/A	800	340	CN/KH
18	235/50R18		97	W		BSW	7 1/2J	520/A/A	730	300	KH
18	225/55R18		98	V		BSW	7J	520/A/A	750	300	KH
18	235/55R18		100	V		BSW	7 1/2J	520/A/A	800	300	KH
18	225/60R18		100	H		BSW	6 1/2J	520/A/A	800	300	KH
18	235/60R18		103	V		BSW	7J	520/A/A	875	300	KH
18	235/65R18		106	H		BSW	7J	520/A/A	950	300	KH
19	235/40R19		96	V	XL	BSW	8 1/2J	520/A/A	710	340	KH
19	245/40R19		98	W	XL	BSW	8 1/2J	520/A/A	750	340	KH
19	245/45R19		98	W		BSW	8J	520/A/A	750	300	KH
19	255/45R19		104	H	XL	BSW	8 1/2J	520/A/A	900	340	VN
19	225/55R19		99	V		BSW	7J	520/A/A	775	300	KH
19	235/55R19		105	V	XL	BSW	7 1/2J	520/A/A	925	340	CN/KH
19	255/60R19		109	H		BSW	7 1/2J	520/A/A	1030	300	KH
20	245/45R20		99	V		BSW	8J	520/A/A	775	300	KH
20	255/45R20		101	V		BSW	8 1/2J	520/A/A	825	300	KH



ALL-SEASON PERFORMANCE TIRE

# ATREZZO TOURING LS



## PERFORMANCE RATINGS:



The **TOURING LS** is designed with comfort in mind, and engineered to go the distance. The Touring LS provides exceptional handling in both dry and wet weather conditions, while delivering all-season performance and value.



### HIGH-SPEED PERFORMANCE

Shoulder sipes reduce noise emissions when traveling at high speeds and enhance driving stability.

### DRIVING COMFORT

Variable pitch design is optimized to ensure a quiet and smooth ride.

### HANDLING PERFORMANCE

Wide, solid footprint offers exceptional handling and control.

RIM	SIZE	PR	LI	SS	XL OR NOT	SIDEWALL	STANDARD RINM	UTQG	MAX LOAD (kg)	PRESSURE (kpa)	PLANT
12	175/70R12		80	T		BSW	5.00B	500/A/B	450	300	CN
13	175/60R13		77	T		BSW	5.00B	500/A/B	412	300	CN
13	165/65R13		77	T		BSW	5.00B	640/A/B	412	300	CN
13	165/70R13		79	H		BSW	5.00B	500/A/B	437	300	CN
13	175/70R13		82	T		BSW	5.00B	640/A/B	475	300	CN
13	185/70R13		86	T		BSW	5.50B	640/A/B	530	300	CN
14	205/60R14		88	H		BSW	6J	500/A/A	560	300	CN
14	185/65R14		86	T		BSW	5 1/2J	640/A/B	530	300	CN
14	185/70R14		88	T		BSW	5 1/2J	640/A/B	560	300	CN
14	195/70R14		91	T		BSW	6J	640/A/B	615	300	CN
14	205/70R14		95	T		BSW	6J	500/A/B	690	300	CN
15	185/60R15		84	T		BSW	5 1/2J	640/A/B	500	300	CN
15	195/60R15		88	T		BSW	6J	640/A/B	560	300	CN
15	205/60R15		91	T		BSW	6J	640/A/B	615	300	CN
15	215/60R15		94	T		BSW	6 1/2J	640/A/B	670	300	CN
15	185/65R15		88	T		BSW	5 1/2J	640/A/B	560	300	CN
15	195/65R15		91	T		BSW	6J	640/A/B	615	300	CN
15	205/65R15		94	H		BSW	6J	640/A/B	670	300	CN
15	215/65R15		96	T		BSW	6 1/2J	640/A/B	710	300	CN
15	205/70R15		96	T		BSW	6J	640/A/B	710	300	CN
15	215/70R15		98	T		BSW	6 1/2J	640/A/B	750	300	CN
15	225/70R15		100	T		BSW	6 1/2J	640/A/B	800	300	CN
16	205/55R16		91	H		BSW	6 1/2J	540/A/A	615	300	CN
16	205/60R16		92	H		BSW	6J	540/A/A	630	300	CN
16	215/60R16		95	H		BSW	6 1/2J	640/A/B	690	300	CN
16	225/60R16		98	T		BSW	6 1/2J	640/A/B	750	300	CN
16	215/65R16		98	T		BSW	6 1/2J	640/A/B	750	300	CN
16	235/65R16		103	T		BSW	7J	640/A/B	875	300	CN
17	225/55R17		97	T		BSW	7J	640/A/B	730	300	CN
17	215/60R17		96	T		BSW	6 1/2J	640/A/B	710	300	CN
17	225/60R17		99	T		BSW	6 1/2J	640/A/B	775	300	CN
17	235/60R17		102	T		BSW	7J	640/A/B	850	300	CN
17	215/65R17		99	T		BSW	6 1/2J	640/A/B	775	300	CN
17	225/65R17		102	T		BSW	6 1/2J	640/A/B	850	300	CN
17	245/65R17		107	T		BSW	7J	640/A/B	975	300	CN



ALL-SEASON PERFORMANCE TIRE

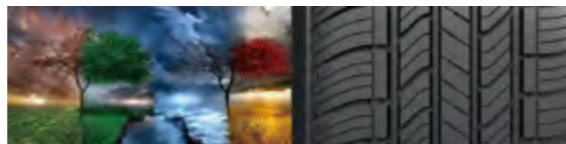
# ATREZZO TOURING WR



## PERFORMANCE RATINGS:



The **TOURING WR** is designed with comfort in mind, and engineered to go the distance. The Touring WR provides exceptional handling in both dry and wet weather conditions, while delivering all-season performance and value.



### HANDLING PERFORMANCE

Wide, solid footprint offers exceptional handling and control.

### DRIVING COMFORT

Variable pitch design is optimized to ensure a quiet and smooth ride.

### HIGH-SPEED PERFORMANCE

Shoulder sipes reduce noise emissions when traveling at high speeds and enhance driving stability.

RIM	SIZE	PR	LI	SS	XL OR NOT	SIDEWALL	STANDARD RINM	UTQG	MAX LOAD (kg)	PRESSURE (kpa)	PLANT
13	185/60R13		80	T		WR	5.50B	640/A/B	450	300	CN
13	165/65R13		77	T		WR	5.00B	640/A/B	412	300	CN
13	175/70R13		82	T		WR	5.00B	500/A/B	475	300	CN
13	185/70R13		86	T		WR	5.50B	640/A/B	530	300	CN
13	165/80R13		83	T		WR	4.50B	500/A/B	487	300	CN
14	185/65R14		86	H		WR	5 1/2J	500/A/A	530	300	CN
14	185/70R14		88	T		WR	5 1/2J	640/A/B	560	300	CN
15	205/70R15		96	T		WR	6J	640/A/B	710	300	CN
15	215/70R15		98	T		WR	6 1/2J	640/A/B	750	300	CN
15	225/70R15		100	T		WR	6 1/2J	640/A/B	800	300	CN
15	215/75R15		100	T		WR	6J	640/A/B	800	300	CN
15	225/75R15		102	S		WR	6J	640/A/B	850	300	CN
15	235/75R15		105	T		WR	6 1/2J	640/A/B	925	300	CN



ULTRA HIGH PERFORMANCE TIRE

# ATREZZO SVA1



## PERFORMANCE RATINGS:



### HIGH-SPEED PERFORMANCE

Provides excellent cornering stability while maintaining superior wet traction.



### DRIVING COMFORT

Wave-like design on the shoulder helps reduce noise emissions and increases cornering stability.



### WET PERFORMANCE

Efficiently drains water for safer driving on wet roads.

RIM	SIZE	PR	LI	SS	XL OR NOT	SIDEWALL	STANDARD RINM	UTQG	MAX LOAD (kg)	PRESSURE (kpa)	PLANT
15	195/50R15		82	V		BSW	6J	340/A/A	475	300	VN
15	195/55R15		85	V		BSW	6J	340/A/A	515	300	VN
16	205/45ZR16		87	W	XL	BSW	7J	340/A/A	545	340	KH
16	195/50R16		88	V	XL	BSW	6J	340/A/A	560	340	VN
16	205/50R16		87	V		BSW	6 1/2J	340/A/A	545	300	KH
16	205/55R16		91	W		BSW	6 1/2J	340/A/A	615	300	KH
16	215/55ZR16		97	W	XL	BSW	7J	340/A/A	730	340	KH
16	225/55ZR16		99	W	XL	BSW	7J	340/A/A	775	340	KH
17	205/40ZR17		84	W	XL	BSW	7 1/2J	340/A/A	500	340	KH
17	215/40ZR17		87	W	XL	BSW	7 1/2J	340/A/A	545	340	KH
17	245/40ZR17		95	W	XL	BSW	8 1/2J	340/A/A	690	340	KH
17	195/45R17		85	V	XL	BSW	6 1/2J	340/A/A	515	340	VN
17	205/45ZR17		88	W	XL	BSW	7J	340/A/A	560	340	KH
17	215/45ZR17		91	W	XL	BSW	7J	340/A/A	615	340	KH
17	225/45ZR17		94	W	XL	BSW	7 1/2J	340/A/A	670	340	KH
17	235/45ZR17		97	W	XL	BSW	8J	340/A/A	730	340	KH
17	245/45ZR17		99	W	XL	BSW	8J	340/A/A	775	340	KH
17	205/50ZR17		93	W	XL	BSW	6 1/2J	340/A/A	650	340	KH

RIM	SIZE	PR	LI	SS	XL OR NOT	SIDEWALL	STANDARD RINM	UTQG	MAX LOAD (kg)	PRESSURE (kpa)	PLANT
17	215/50R17		95	W	XL	BSW	7J	340/A/A	690	340	KH
17	225/50ZR17		98	W	XL	BSW	7J	340/A/A	750	340	KH
17	235/50ZR17		96	W		BSW	7 1/2J	340/A/A	710	300	KH
17	215/55ZR17		98	W	XL	BSW	7J	340/A/A	750	340	KH
17	225/55ZR17		101	W	XL	BSW	7J	340/A/A	825	340	KH
17	235/55ZR17		103	W	XL	BSW	7 1/2J	340/A/A	875	340	KH
18	215/35ZR18		84	W	XL	BSW	7 1/2J	340/A/A	500	340	KH
18	255/35ZR18		94	W	XL	BSW	9J	340/A/A	670	340	KH
18	265/35ZR18		97	Y	XL	BSW	9 1/2J	340/A/A	730	340	VN
18	215/40ZR18		89	W	XL	BSW	7 1/2J	340/A/A	580	340	VN
18	225/40ZR18		92	W	XL	BSW	8J	340/A/A	630	340	KH
18	235/40ZR18		95	W	XL	BSW	8 1/2J	340/A/A	690	340	KH
18	245/40ZR18		97	Y	XL	BSW	8 1/2J	340/A/A	730	340	KH
18	225/45ZR18		95	W	XL	BSW	7 1/2J	340/A/A	690	340	KH
18	235/45R18		98	V	XL	BSW	8J	340/A/A	750	340	KH
18	245/45ZR18		100	W	XL	BSW	8J	340/A/A	800	340	KH
18	255/45ZR18		103	W	XL	BSW	8 1/2J	340/A/A	875	340	KH
18	225/50ZR18		95	W		BSW	7J	340/A/A	690	300	KH
18	235/50ZR18		97	W		BSW	7 1/2J	340/A/A	730	300	KH
18	245/50ZR18		104	Y	XL	BSW	7 1/2J	340/A/A	900	340	KH
18	225/55R18		98	V		BSW	7J	340/A/A	750	300	KH
19	265/30ZR19		93	Y	XL	BSW	9 1/2J	340/A/A	650	340	VN
19	275/30ZR19		96	Y	XL	BSW	9 1/2J	340/A/A	710	340	VN
19	235/35ZR19		91	W	XL	BSW	8 1/2J	340/A/A	615	340	KH
19	245/35ZR19		93	W	XL	BSW	8 1/2J	340/A/A	650	340	VN
19	255/35ZR19		96	W	XL	BSW	9J	340/A/A	710	340	KH
19	275/35ZR19		100	W	XL	BSW	9 1/2J	340/A/A	800	340	VN
19	225/40ZR19		93	Y	XL	BSW	8J	340/A/A	650	340	VN
19	235/40R19		96	V	XL	BSW	8 1/2J	340/A/A	710	340	KH
19	245/40ZR19		98	Y	XL	BSW	8 1/2J	340/A/A	750	340	KH
19	255/40R19		100	H	XL	BSW	9J	340/A/A	800	340	KH
19	275/40ZR19		105	Y	XL	BSW	9 1/2J	340/A/A	925	340	VN
19	245/45ZR19		98	W		BSW	8J	340/A/A	750	300	KH
19	255/50R19		107	V	XL	BSW	8J	340/A/A	975	340	KH
20	225/30ZR20		85	Y	XL	BSW	8J	340/A/A	515	340	KH
20	235/30ZR20		88	W	XL	BSW	8 1/2J	340/A/A	560	340	VN
20	275/30ZR20		97	W	XL	BSW	9 1/2J	340/A/A	730	340	VN
20	225/35ZR20		90	W	XL	BSW	8J	340/A/A	600	340	KH
20	245/35ZR20		95	W	XL	BSW	8 1/2J	340/A/A	690	340	KH
20	255/35ZR20		97	W	XL	BSW	9J	340/A/A	730	340	KH
20	275/35ZR20		102	W	XL	BSW	9 1/2J	340/A/A	850	340	KH
20	245/40ZR20		99	Y	XL	BSW	8 1/2J	340/A/A	775	340	VN
20	255/40ZR20		97	W		BSW	9J	340/A/A	730	300	KH
20	245/45ZR20		103	W	XL	BSW	8J	340/A/A	875	340	KH
20	255/45ZR20		105	W	XL	BSW	8 1/2J	340/A/A	925	340	KH
20	275/45ZR20		110	W	XL	BSW	9J	340/A/A	1060	340	KH
20	245/50ZR20		102	W		BSW	7 1/2J	340/A/A	850	300	KH
20	265/50R20		111	V	XL	BSW	8 1/2J	340/A/A	1090	340	KH
22	245/30ZR22		92	W	XL	BSW	8 1/2J	340/A/A	630	340	VN



ULTRA HIGH PERFORMANCE SUV TIRE

# ATREZZO SVR LX



## PERFORMANCE RATINGS:



The **ATREZZO SVR LX** is a premium high-performance tire designed for SUV and crossover vehicles. An advanced tread design with a sporty look, the SVR LX accentuates the appearance of your ride while providing exceptional all-season performance, comfort, and tread life.



### GROOVE DESIGN

All grooves are slightly inclined to effectively funnel water out of the tire to improve hydroplaning resistance.

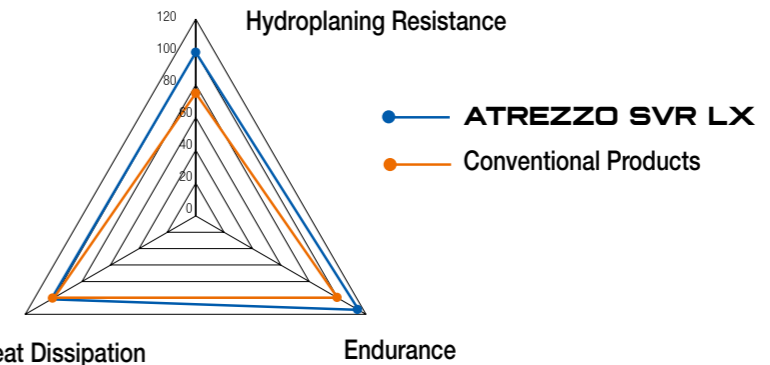
### DIRECTIONAL TREAD PATTERN

The uniform V-shaped tread pattern design provides excellent grip, handling, and high speed performance in both dry and wet conditions. Efficiently drains water for a safer driving experience.



### SHOULDER GROOVES

The variable pitch design on the shoulder grooves and the sipes improve grip and handling for all seasons. They also effectively reduce noise emissions for improved driving comfort.



RIM	SIZE	PR	LI	SS	XL OR NOT	SIDEWALL	STANDARD RINM	UTQG	MAX LOAD (kg)	PRESSURE (kpa)	PLANT
20	275/40R20		106	W	XL	BSW	9 1/2J	420/A/A	950	340	CN
20	255/45R20		105	V	XL	BSW	8 1/2J	420/A/A	925	340	CN
20	275/45R20		110	V	XL	BSW	9J	420/A/A	1060	340	CN
20	295/45R20		114	V	XL	BSW	10J	420/A/A	1180	340	CN
20	265/50R20		111	V	XL	BSW	8 1/2J	420/A/A	1090	340	CN
20	285/50R20		116	V	XL	BSW	9J	420/A/A	1250	340	CN
20	305/50R20		120	V	XL	BSW	9 1/2J	420/A/A	1400	340	CN
20	275/55R20		117	V	XL	BSW	8 1/2J	420/A/A	1285	340	CN
20	275/60R20		119	S	XL	BSW	8J	420/A/A	1360	340	CN
22	255/30R22		95	V	XL	BSW	9J	420/A/A	690	340	CN
22	265/35R22		102	W	XL	BSW	9 1/2J	420/A/A	850	340	CN
22	265/40R22		106	V	XL	BSW	9 1/2J	420/A/A	950	340	CN
22	305/40R22		114	V	XL	BSW	11J	420/A/A	1180	340	CN
22	305/45R22		118	V	XL	BSW	10J	420/A/A	1320	340	CN
24	295/35R24		110	V	XL	BSW	10 1/2J	420/A/A	1060	340	CN
24	305/35R24		112	V	XL	BSW	11J	420/A/A	1120	340	CN
24	285/40R24		112	V	XL	BSW	10J	420/A/A	1120	340	CN
24	295/40R24		114	V	XL	BSW	10 1/2J	420/A/A	1180	340	CN



ULTRA HIGH PERFORMANCE SUV TIRE

# ATREZZO SVR LX+



## PERFORMANCE RATINGS:



### HIGH SPEED PERFORMANCE

Symmetric tread pattern design improves high-speed acceleration. Central rib pattern improves upon high-speed stability for a more comfortable drive.



### WET PERFORMANCE

The groove and sipe designs running from the shoulder to the center of the tread effectively break through water film making it perfect for wet road conditions.



### IMPROVED STABILITY

The three-dimensional groove design located on the tread block edges improve tread block rigidity and driving stability.



### EXTENDED SERVICE LIFE

The ground contact force on the tire has been designed to distribute more evenly ensuring greater driving stability and promoting even wear.



### REDUCED NOISE EMISSIONS

An optimized tread pitch arrangement and wide groove design extending from the center to the shoulder effectively disrupts noise frequencies to reduce noise emissions.

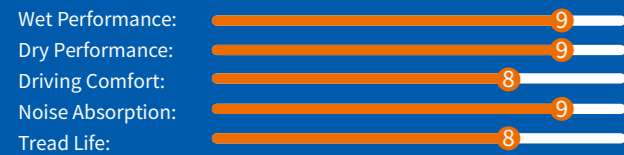
RIM	SIZE	PR	LI	SS	XL OR NOT	SIDEWALL	STANDARD RINM	UTQG	MAX LOAD (kg)	PRESSURE (kpa)	PLANT
20	275/40R20		106	V	XL	BSW	9 1/2J	420/A/A	950	340	KH
20	255/45R20		105	V	XL	BSW	8 1/2J	420/A/A	925	340	KH
20	275/45R20		110	V	XL	BSW	9J	420/A/A	1060	340	KH
20	295/45R20		114	V	XL	BSW	10J	420/A/A	1180	340	KH
20	265/50R20		111	V	XL	BSW	8 1/2J	420/A/A	1090	340	KH
20	285/50R20		116	V	XL	BSW	9J	420/A/A	1250	340	KH
20	305/50R20		120	V	XL	BSW	9 1/2J	420/A/A	1400	340	KH
20	275/55R20		117	V	XL	BSW	8 1/2J	420/A/A	1285	340	KH
20	275/60R20		119	H	XL	BSW	8J	420/A/A	1360	340	KH
22	235/30ZR22		90	W	XL	BSW	8 1/2J	420/A/A	600	340	KH/VN
22	245/30ZR22		92	W	XL	BSW	8 1/2J	420/A/A	630	340	KH
22	265/35ZR22		102	W	XL	BSW	9 1/2J	420/A/A	850	340	KH/VN
22	265/40R22		106	V	XL	BSW	9 1/2J	420/A/A	950	340	KH
22	305/40R22		114	V	XL	BSW	11J	420/A/A	1180	340	KH/VN
22	305/45R22		118	V	XL	BSW	10J	420/A/A	1320	340	KH
24	295/35R24		110	V	XL	BSW	10 1/2J	420/A/A	1060	340	KH
24	305/35R24		112	V	XL	BSW	11J	420/A/A	1120	340	KH



ULTRA HIGH PERFORMANCE TIRE

# ATREZZO ZSR

## PERFORMANCE RATINGS:



The new generation **ATREZZO ZSR** is engineered to deliver precise wet and dry handling performance. With an asymmetrical tread design and enhanced tread rubber formula, Atrezzo ZSR rises to the challenge and provides exceptional performance on the street and on the highway.



### NOISE EMISSION

The various groove angles evenly distribute vibrations generated while running to reduce noise emissions. The design has been measured to reduce noise emissions by about 3%.



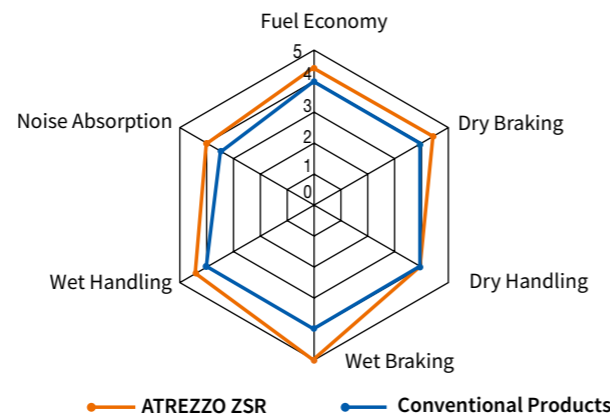
### EXCELLENT DRAINAGE PERFORMANCE

Grooves with varying widths efficiently drain water to reduce hydroplaning and improve fuel efficiency.



### LONGER TREAD LIFE

Through our testing, we have ensured greater driving stability and promoted uniform wear by increasing the tire's ground contact area by 6%.



### HIGH SPEED STABILITY

The central rib pattern improves high speed stability for improved driving comfort.

### CORNERING

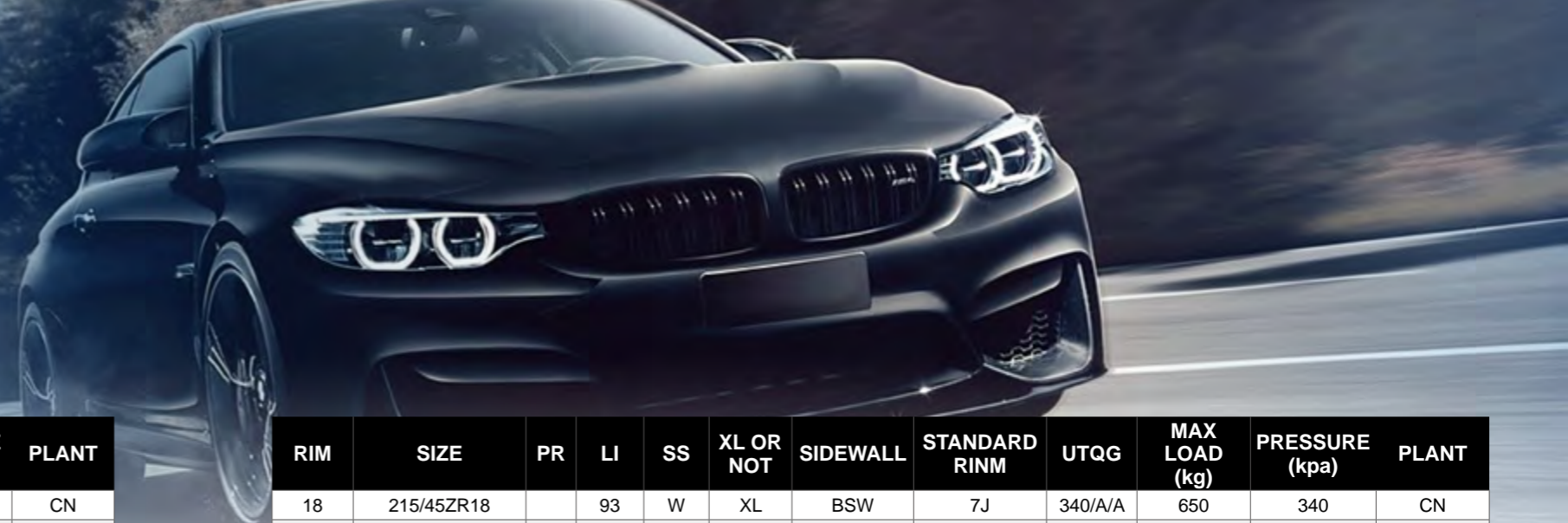
The reinforced shoulder design improves grip for effective cornering capabilities.

RIM	SIZE	PR	LI	SS	XL OR NOT	SIDEWALL	STANDARD RINM	UTQG	MAX LOAD (kg)	PRESSURE (kpa)	PLANT
15	195/45R15		78	V		BSW	6 1/2J	340/A/A	425	300	CN
15	195/50R15		82	V		BSW	6J	340/A/A	475	300	CN
16	195/40ZR16		80	W	XL	BSW	7J	340/A/A	450	340	CN
16	195/45R16		84	V	XL	BSW	6 1/2J	340/A/A	500	340	CN
16	205/45R16		87	W	XL	BSW	7J	340/A/A	545	340	CN
16	205/45R16		87	Y	XL	BSW	7J	340/A/A	545	340	CN
16	205/50ZR16		87	W		BSW	6 1/2J	340/A/A	545	300	CN
16	195/55RF16		87	V		BSW	6J	340/A/A	545	300	CN
16	205/55ZR16		91	W		BSW	6 1/2J	340/A/A	615	300	CN
16	205/55ZRF16		91	W		BSW	6 1/2J	340/A/A	615	300	CN
16	215/55ZR16		97	W	XL	BSW	7J	340/A/A	730	340	CN
16	225/55ZR16		99	W	XL	BSW	7J	340/A/A	775	340	CN
17	215/35ZR17		83	W	XL	BSW	7 1/2J	340/A/A	487	340	CN
17	215/35ZR17		83	Y	XL	BSW	7 1/2J	340/A/A	487	340	CN
17	195/40R17		81	V	XL	BSW	7J	340/A/A	462	340	CN
17	205/40ZR17		84	W	XL	BSW	7 1/2J	340/A/A	500	340	CN
17	205/40ZR17		84	Y	XL	BSW	7 1/2J	340/A/A	500	340	CN
17	215/40ZR17		87	W	XL	BSW	7 1/2J	340/A/A	545	340	CN
17	215/40ZR17		87	Y	XL	BSW	7 1/2J	340/A/A	545	340	CN



ULTRA HIGH PERFORMANCE TIRE

# ATREZZO ZSR



RIM	SIZE	PR	LI	SS	XL OR NOT	SIDEWALL	STANDARD RINM	UTQG	MAX LOAD (kg)	PRESSURE (kpa)	PLANT
17	245/40ZR17		95	W	XL	BSW	8 1/2J	340/A/A	690	340	CN
17	245/40ZR17		95	Y	XL	BSW	8 1/2J	340/A/A	690	340	CN
17	205/45ZR17		88	W	XL	BSW	7J	340/A/A	560	340	CN
17	205/45RF17		88	W	XL	BSW	7J	340/A/A	560	340	CN
17	205/45ZR17		88	Y	XL	BSW	7J	340/A/A	560	340	CN
17	215/45ZR17		91	W	XL	BSW	7J	340/A/A	615	340	CN
17	215/45ZR17		91	Y	XL	BSW	7J	340/A/A	615	340	CN
17	225/45ZRF17		91	Y		BSW	7 1/2J	340/A/A	615	300	CN
17	225/45ZR17		94	W	XL	BSW	7 1/2J	340/A/A	670	340	CN
17	225/45ZR17		94	Y	XL	BSW	7 1/2J	340/A/A	670	340	CN
17	235/45ZR17		97	W	XL	BSW	8J	340/A/A	730	340	CN
17	235/45ZR17		97	Y	XL	BSW	8J	340/A/A	730	340	CN
17	245/45ZR17		99	W	XL	BSW	8J	340/A/A	775	340	CN
17	245/45ZR17		99	Y	XL	BSW	8J	340/A/A	775	340	CN
17	205/50ZRF17		89	W		BSW	6 1/2J	340/A/A	580	300	CN
17	205/50ZR17		93	W	XL	BSW	6 1/2J	340/A/A	650	340	CN
17	215/50R17		95	V	XL	BSW	7J	340/A/A	690	340	CN
17	215/50ZR17		95	W	XL	BSW	7J	340/A/A	690	340	CN
17	225/50ZRF17		94	W		BSW	7J	340/A/A	670	300	CN
17	225/50ZR17		98	W	XL	BSW	7J	340/A/A	750	340	CN
17	225/50ZR17		98	Y	XL	BSW	7J	340/A/A	750	340	CN
17	215/55ZR17		98	W	XL	BSW	7J	340/A/A	750	340	CN
17	225/55R17		101	V	XL	BSW	7J	340/A/A	825	340	CN
17	225/55ZR17		101	W	XL	BSW	7J	340/A/A	825	340	CN
17	225/55ZRF17		97	Y		BSW	7J	340/A/A	730	300	CN
18	215/35ZR18		84	W	XL	BSW	7 1/2J	340/A/A	500	340	CN
18	215/35ZR18		84	Y	XL	BSW	7 1/2J	340/A/A	500	340	CN
18	225/35ZR18		87	W	XL	BSW	8J	340/A/A	545	340	CN
18	225/35ZR18		87	Y	XL	BSW	8J	340/A/A	545	340	CN
18	255/35ZRF18		90	Y		BSW	9J	340/A/A	600	300	CN
18	255/35ZR18		94	W	XL	BSW	9J	340/A/A	670	340	CN
18	255/35ZR18		94	Y	XL	BSW	9J	340/A/A	670	340	CN
18	265/35ZR18		97	W	XL	BSW	9 1/2J	340/A/A	730	340	CN
18	265/35ZR18		97	Y	XL	BSW	9 1/2J	340/A/A	730	340	CN
18	215/40R18		89	V	XL	BSW	7 1/2J	340/A/A	580	340	CN
18	225/40ZR18		92	W	XL	BSW	8J	340/A/A	630	340	CN
18	225/40ZR18		92	Y	XL	BSW	8J	340/A/A	630	340	CN
18	225/40ZRF18		92	Y	XL	BSW	8J	340/A/A	630	340	CN
18	235/40ZR18		95	W	XL	BSW	8 1/2J	340/A/A	690	340	CN
18	235/40ZR18		95	Y	XL	BSW	8 1/2J	340/A/A	690	340	CN
18	245/40ZR18		97	W	XL	BSW	8 1/2J	340/A/A	730	340	CN
18	245/40ZRF18		97	Y	XL	BSW	8 1/2J	340/A/A	730	340	CN
18	245/40ZR18		97	Y	XL	BSW	8 1/2J	340/A/A	730	340	CN

RIM	SIZE	PR	LI	SS	XL OR NOT	SIDEWALL	STANDARD RINM	UTQG	MAX LOAD (kg)	PRESSURE (kpa)	PLANT
18	215/45ZR18		93	W	XL	BSW	7J	340/A/A	650	340	CN
18	215/45ZR18		93	Y	XL	BSW	7J	340/A/A	650	340	CN
18	225/45ZR18		95	W	XL	BSW	7 1/2J	340/A/A	690	340	CN
18	225/45ZR18		95	Y	XL	BSW	7 1/2J	340/A/A	690	340	CN
18	235/45ZR18		98	W	XL	BSW	8J	340/A/A	750	340	CN
18	235/45ZR18		98	Y	XL	BSW	8J	340/A/A	750	340	CN
18	245/45ZR18		100	W	XL	BSW	8J	340/A/A	800	340	CN
18	245/45ZRF18		100	W	XL	BSW	8J	340/A/A	800	340	CN
18	245/45ZR18		100	Y	XL	BSW	8J	340/A/A	800	340	CN
18	255/45ZR18		103	W	XL	BSW	8 1/2J	340/A/A	875	340	CN
18	255/45ZR18		103	Y	XL	BSW	8 1/2J	340/A/A	875	340	CN
18	225/50ZR18		95	W		BSW	7J	340/A/A	690	300	CN
18	225/50ZR18		95	Y		BSW	7J	340/A/A	690	300	CN
18	235/50ZR18		101	W	XL	BSW	7 1/2J	340/A/A	825	340	CN
18	235/50ZR18		101	Y	XL	BSW	7 1/2J	340/A/A	825	340	CN
18	245/50ZRF18		100	Y		BSW	7 1/2J	340/A/A	800	300	CN
19	275/30ZR19		96	W	XL	BSW	9 1/2J	340/A/A	710	340	CN
19	275/30ZR19		96	Y	XL	BSW	9 1/2J	340/A/A	710	340	CN
19	215/35ZR19		85	W	XL	BSW	7 1/2J	340/A/A	515	340	CN
19	215/35ZR19		85	Y	XL	BSW	7 1/2J	340/A/A	515	340	CN
19	225/35ZR19		88	W	XL	BSW	8J	340/A/A	560	340	CN
19	225/35ZR19		88	Y	XL	BSW	8J	340/A/A	560	340	CN
19	235/35ZR19		91	W	XL	BSW	8 1/2J	340/A/A	615	340	CN
19	235/35ZR19		91	Y	XL	BSW	8 1/2J	340/A/A	615	340	CN
19	245/35ZR19		93	W	XL	BSW	8 1/2J	340/A/A	650	340	CN
19	245/35ZR19		93	Y	XL	BSW	8 1/2J	340/A/A	650	340	CN
19	255/35ZR19		96	Y	XL	BSW	9J	340/A/A	710	340	CN
19	275/35ZRF19		100	Y	XL	BSW	9 1/2J	340/A/A	800	340	CN
19	275/35ZR19		96	W		BSW	9 1/2J	340/A/A	710	300	CN
19	275/35ZR19		96	Y		BSW	9 1/2J	340/A/A	710	300	CN
19	245/40ZR19		98	W	XL	BSW	8 1/2J	340/A/A	750	340	CN
19	245/40ZRF19		98	Y	XL	BSW	8 1/2J	340/A/A	750	340	CN
19	245/40ZR19		98	Y	XL	BSW	8 1/2J	340/A/A	750	340	CN
19	235/55ZR19		105	W	XL	BSW	7 1/2J	340/A/A	925	340	CN
20	245/30ZR20		95	W	XL	BSW	8 1/2J	340/A/A	690	340	CN
20	275/30ZR20		97	W	XL	BSW	9 1/2J	340/A/A	730	340	CN
20	275/30ZR20		97	Y	XL	BSW	9 1/2J	340/A/A	730	340	CN
20	225/35ZR20		90	Y	XL	BSW	8J	340/A/A	600	340	CN
20	225/35ZR20		93	W	XL	BSW	8J	340/A/A	650	340	CN
20	245/35ZR20		95	W	XL	BSW	8 1/2J	340/A/A	690	340	CN
20	245/35ZR20		95	Y	XL	BSW	8 1/2J	340/A/A	690	340	CN
20	255/35ZR20		97	W	XL	BSW	9J	340/A/A	730	340	CN
20	255/35ZR20		97	Y	XL	BSW	9J	340/A/A	730	340	CN





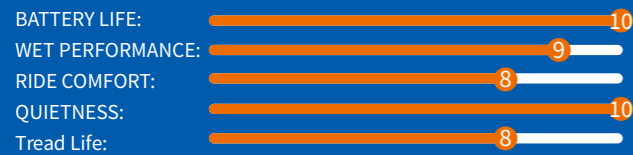
ULTRA HIGH PERFORMANCE TIRE



# ATREZZO ZSR2 & ZSR2 | EV



## PERFORMANCE RATINGS:



The **UHP Atrezzo ZSR2 and ZSR2 EV** are the next generation of the critically acclaimed Atrezzo ZSR. This next generation model utilizes Sailun's proprietary EcoPoint3 rubber compound technology which is designed to offer exceptional rolling resistance for energy efficiency, improved wet grip, greater wear resistance for a longer tire life, and improved noise cancellation for better driving comfort. The ZSR2 EV also comes with a strengthened tire body that helps to handle the instant torque of electric vehicles, effectively improves stopping distances, and offers exceptional handling and precision turning.

### EXCEPTIONAL WET GRIP

Equipped with EcoPoint<sup>3</sup> technology, the ZSR2 offers exceptional grip in wet weather applications for overall improved driving safety.

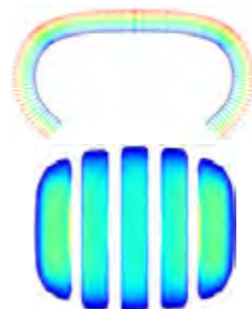


### REDUCE RANGE ANXIETY

ZSR2 EV is equipped with the revolutionary EcoPoint<sup>3</sup> technology which is designed to effectively reduce rolling resistance, which in turn helps to increase the range of electric vehicles. It's high efficiency design not only improves overall driving experience, but also reduces 'range anxiety' for drivers.

### LARGE FOOTPRINT

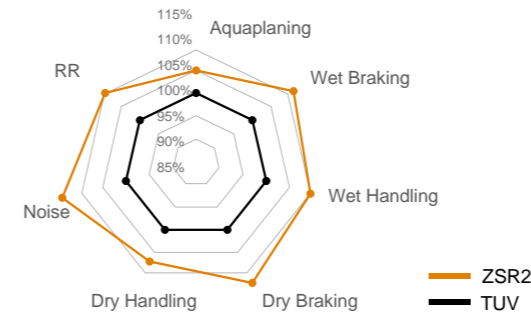
Tread blocks employ a chamfer design which increases the tire's ground contact area to improve handling stability.



### EXCEPTIONAL HANDLING

The optimized contour design effectively distributes ground pressure to provide exceptional handling performance.

## SL VS TUV RESULTS COMPARISON



### INTEGRATED BLOCK DESIGN

Outer tread blocks use an integrated block design that offers greater durability.

RIM	SIZE	EV	LI	SS	XL OR NOT	SIDEWALL	STANDARD RINM	UTQG	MAX LOAD (kg)	PRESSURE (kpa)	PLANT
17	205/45ZR17		88	W	XL	BSW	7J	420/A/A	560	340	CN
17	225/45ZR17		94	Y	XL	BSW	7 1/2J	420/A/A	670	340	CN
17	235/45ZR17		97	Y	XL	BSW	8J	420/A/A	730	340	CN
17	205/50ZR17		93	W	XL	BSW	6 1/2J	420/A/A	650	340	CN
17	215/50ZR17		95	W	XL	BSW	7J	420/A/A	690	340	CN
17	225/50ZR17		98	W	XL	BSW	7J	420/A/A	750	340	CN
17	215/55ZR17		98	W	XL	BSW	7J	420/A/A	750	340	CN
17	225/55ZR17		101	W	XL	BSW	7J	420/A/A	825	340	CN
18	225/40ZR18		92	Y	XL	BSW	8J	420/A/A	630	340	CN
18	235/40ZR18		95	Y	XL	BSW	8 1/2J	420/A/A	690	340	CN
18	245/40ZR18		97	Y	XL	BSW	8 1/2J	420/A/A	730	340	CN
18	225/45ZR18		95	Y	XL	BSW	7 1/2J	420/A/A	690	340	CN
18	235/45ZR18		98	W	XL	BSW	8J	420/A/A	750	340	CN
18	235/45ZR18		98	Y	XL	BSW	8J	420/A/A	750	340	CN
18	245/45ZR18		100	Y	XL	BSW	8J	420/A/A	800	340	CN
18	245/45ZR18		100	W	XL	BSW	8J	420/A/A	800	340	CN
19	255/35ZR19		96	Y	XL	BSW	9J	420/A/A	710	340	CN
20	275/30ZR20		97	Y	XL	BSW	9 1/2J	420/A/A	730	340	CN
20	245/35ZR20		95	Y	XL	BSW	8 1/2J	420/A/A	690	340	CN



ULTRA HIGH PERFORMANCE SUV TIRE

# ATREZZO ZSR SUV



## PERFORMANCE RATINGS:



### DRIVING COMFORT

Groove pattern improves driving stability and works with the optimized tread pitch arrangement to reduce noise emissions.

### OVERALL PERFORMANCE

The asymmetric pattern design boasts two strengths; the inner sidewall is adept at draining water to increase wet performance, and outside sidewall with its large tread blocks improves grip while cornering.

### HIGH-SPEED PERFORMANCE

Wide tread surface design; when in contact with the ground the specially structured crown evenly distributes force to achieve precise control at high speeds.



### FUEL EFFICIENCY

Tread compound effectively improves wet driving capabilities and rolling resistance for improved fuel efficiency.



RIM	SIZE	PR	LI	SS	XL OR NOT	SIDEWALL	STANDARD RIMM	UTQG	MAX LOAD (kg)	PRESSURE (kpa)	PLANT
18	225/55R18		98	V		BSW	7J	340/A/A	750	300	CN
18	235/55R18		100	V		BSW	7 1/2J	340/A/A	800	300	CN
18	255/55R18		109	V	XL	BSW	8J	340/A/A	1030	340	CN
18	235/60R18		107	V	XL	BSW	7J	340/A/A	975	340	CN
18	255/60R18		112	V	XL	BSW	7 1/2J	340/A/A	1120	340	CN
19	225/40ZR19		93	Y	XL	BSW	8J	340/A/A	650	340	CN
19	275/40ZR19		105	Y	XL	BSW	9 1/2J	340/A/A	925	340	CN
19	225/45ZR19		96	Y	XL	BSW	7 1/2J	340/A/A	710	340	CN
19	235/45ZR19		99	Y	XL	BSW	8J	340/A/A	775	340	CN
19	245/45ZR19		102	Y	XL	BSW	8J	340/A/A	850	340	CN
19	285/45ZR19		111	Y	XL	BSW	9 1/2J	340/A/A	1090	340	CN
19	255/50ZR19		107	Y	XL	BSW	8J	340/A/A	975	340	CN
19	265/50ZR19		110	Y	XL	BSW	8 1/2J	340/A/A	1060	340	CN
19	225/55R19		99	V		BSW	7J	340/A/A	775	300	CN
19	255/55ZR19		111	W	XL	BSW	8J	340/A/A	1090	340	CN
20	315/35ZR20		110	Y	XL	BSW	11J	340/A/A	1060	340	CN
20	275/40ZR20		106	Y	XL	BSW	9 1/2J	340/A/A	950	340	CN
20	245/45ZR20		103	Y	XL	BSW	8J	340/A/A	875	340	CN
20	255/45ZR20		105	Y	XL	BSW	8 1/2J	340/A/A	925	340	CN
20	265/45ZR20		108	Y	XL	BSW	9J	340/A/A	1000	340	CN
20	275/45ZR20		110	Y	XL	BSW	9J	340/A/A	1060	340	CN
20	255/50ZR20		109	W	XL	BSW	8J	340/A/A	1030	340	CN
20	255/50ZR20		109	Y	XL	BSW	8J	340/A/A	1030	340	CN
20	265/50R20		111	V	XL	BSW	8 1/2J	340/A/A	1090	340	CN
20	275/50ZR20		113	W	XL	BSW	8 1/2J	340/A/A	1150	340	CN
20	285/50R20		116	V	XL	BSW	9J	340/A/A	1250	340	CN
20	255/55ZR20		110	Y	XL	BSW	8J	340/A/A	1060	340	CN
20	275/55R20		117	V	XL	BSW	8 1/2J	340/A/A	1285	340	CN
20	275/60R20		119	V	XL	BSW	8J	340/A/A	1360	340	CN
21	295/35ZR21		107	Y	XL	BSW	10 1/2J	340/A/A	975	340	CN
21	295/40ZR21		111	Y	XL	BSW	10 1/2J	340/A/A	1090	340	CN
21	275/45ZR21		110	Y	XL	BSW	9J	340/A/A	1060	340	CN
22	265/35ZR22		102	Y	XL	BSW	9 1/2J	340/A/A	850	340	CN
22	285/35ZR22		106	Y	XL	BSW	10J	340/A/A	950	340	CN
22	275/40ZR22		108	Y	XL	BSW	9 1/2J	340/A/A	1000	340	CN
22	295/40ZR22		112	Y	XL	BSW	10 1/2J	340/A/A	1120	340	CN



ULTRA HIGH PERFORMANCE TIRE

# TURISMO SU58

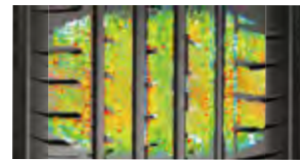


## PERFORMANCE RATINGS:



### DRIVING COMFORT

Tread is optimally designed to reduce noise emissions.



### HANDLING AND GRIP

The asymmetric pattern offers improved tread contact pressure distribution for better overall handling and grip.



### WET PERFORMANCE

The inner tread's groove design effectively expels water while the sipes break through water film on the road surface for overall better grip and driving performance on wet roads.

### DRY PERFORMANCE

Special tread formula improves grip on dry roads.

RIM	SIZE	PR	LI	SS	XL OR NOT	SIDEWALL	STANDARD RINM	UTQG	MAX LOAD (kg)	PRESSURE (kpa)	PLANT
16	205/55ZR16		94	W	XL	BSW	6 1/2J	380/A/A	670	340	CN
16	215/55ZR16		97	W	XL	BSW	7J	380/A/A	730	340	CN
16	225/55ZR16		99	W	XL	BSW	7J	380/A/A	775	340	CN
17	215/45ZR17		91	W	XL	BSW	7J	380/A/A	615	340	CN
17	225/45ZRF17		91	W		BSW	7 1/2J	380/A/A	615	300	CN
17	225/45ZR17		94	W	XL	BSW	7 1/2J	380/A/A	670	340	CN
17	235/45ZR17		97	W	XL	BSW	8J	380/A/A	730	340	CN
17	245/45ZR17		99	W	XL	BSW	8J	380/A/A	775	340	CN
17	205/50ZR17		93	W	XL	BSW	6 1/2J	380/A/A	650	340	CN
17	215/50ZR17		95	W	XL	BSW	7J	380/A/A	690	340	CN
17	225/50ZRF17		94	W		BSW	7J	380/A/A	670	300	CN
17	225/50ZR17		98	W	XL	BSW	7J	380/A/A	750	340	CN
17	235/50ZR17		100	W	XL	BSW	7 1/2J	380/A/A	800	340	CN
17	215/55ZR17		98	W	XL	BSW	7J	380/A/A	750	340	CN
17	225/55ZR17		101	W	XL	BSW	7J	380/A/A	825	340	CN
17	225/55ZRF17		97	W		BSW	7J	380/A/A	730	300	CN
18	225/40ZRF18		88	W		BSW	8J	380/A/A	560	300	CN
18	225/40ZR18		92	W	XL	BSW	8J	380/A/A	630	340	CN
18	245/40ZRF18		93	W		BSW	8 1/2J	380/A/A	650	300	CN
18	245/40ZR18		97	W	XL	BSW	8 1/2J	380/A/A	730	340	CN
18	255/40ZR18		99	W	XL	BSW	9J	380/A/A	775	340	CN
18	225/45ZRF18		91	W		BSW	7 1/2J	380/A/A	615	300	CN
18	225/45ZR18		95	W	XL	BSW	7 1/2J	380/A/A	690	340	CN
18	235/45ZR18		98	Y	XL	BSW	8J	380/A/A	750	340	CN
18	245/45ZR18		100	W	XL	BSW	8J	380/A/A	800	340	CN
18	245/45ZRF18		96	W		BSW	8J	380/A/A	710	300	CN
18	255/45ZR18		103	W	XL	BSW	8 1/2J	380/A/A	875	340	CN
18	275/45ZR18		107	W	XL	BSW	9J	380/A/A	975	340	CN
18	245/50ZRF18		100	W		BSW	7 1/2J	380/A/A	800	300	CN
18	245/50ZR18		104	W	XL	BSW	7 1/2J	380/A/A	900	340	CN
19	225/45ZR19		96	W	XL	BSW	7 1/2J	380/A/A	710	340	CN
19	245/45ZR19		102	W	XL	BSW	8J	380/A/A	850	340	CN



ULTRA HIGH PERFORMANCE SUV TIRE

# TURISMO SU59



## PERFORMANCE RATINGS:



### DRIVING COMFORT

Asymmetric pattern is designed specifically to reduce tire noise emissions offering a quieter drive.

### LONGER LIFE

The tread contact area is designed to be 8% larger for a more optimal contact pressure distribution that promotes even tread wear, a longer tread life, and better driving stability.

### IMPROVED HANDLING

The tread's central rib is designed to improve high-speed stability.

RIM	SIZE	PR	LI	SS	XL OR NOT	SIDEWALL	STANDARD RINM	UTQG	MAX LOAD (kg)	PRESSURE (kpa)	PLANT
18	255/40ZR18		99	W	XL	BSW	9J	420/A/A	775	340	CN
18	235/50R18		97	V		BSW	7 1/2J	420/A/A	730	300	CN
18	225/55ZR18		102	W	XL	BSW	7J	420/A/A	850	340	CN
18	235/55ZR18		100	W		BSW	7 1/2J	420/A/A	800	300	CN
18	255/55R18		109	V	XL	BSW	8J	420/A/A	1030	340	CN
19	285/30ZR19		98	W	XL	BSW	10J	420/A/A	750	340	CN
19	255/35ZR19		96	W	XL	BSW	9J	420/A/A	710	340	CN
19	225/45ZR19		96	W	XL	BSW	7 1/2J	420/A/A	710	340	CN
19	235/45ZR19		99	W	XL	BSW	8J	420/A/A	775	340	CN
19	255/45ZR19		104	W	XL	BSW	8 1/2J	420/A/A	900	340	CN
19	235/50ZR19		103	W	XL	BSW	7 1/2J	420/A/A	875	340	CN
19	255/50R19		107	V	XL	BSW	8J	420/A/A	975	340	CN
19	265/50ZR19		110	W	XL	BSW	8 1/2J	420/A/A	1060	340	CN
19	225/55ZR19		99	W		BSW	7J	420/A/A	775	300	CN
19	235/55ZR19		101	W		BSW	7 1/2J	420/A/A	825	300	CN
19	245/55R19		103	V		BSW	7 1/2J	420/A/A	875	300	CN
19	255/55ZR19		111	W	XL	BSW	8J	420/A/A	1090	340	CN
20	245/45ZR20		103	W	XL	BSW	8J	420/A/A	875	340	CN
20	275/45ZR20		110	W	XL	BSW	9J	420/A/A	1060	340	CN
20	285/50ZR20		116	W	XL	BSW	9J	420/A/A	1250	340	CN
20	235/55ZR20		105	W	XL	BSW	7 1/2J	420/A/A	925	340	CN
20	255/55ZR20		110	W	XL	BSW	8J	420/A/A	1060	340	CN
21	275/45ZR21		110	W	XL	BSW	9J	420/A/A	1060	340	CN



ULTRA HIGH PERFORMANCE TIRE

# ATREZZO R01 SPORT



## PERFORMANCE RATINGS:



**ATREZZO R01 SPORT** is the first choice for gearheads. This street legal sport specific tire boasts strong grip and exceptional handling for all your on and off-track sporting needs. Street legal – not used for drifting.



### SPORT AESTHETICS

High-end product with unique sidewall design; employs curved incisions which fully reflects its sporty and urban look.

### HIGH-SPEED PERFORMANCE

Wide tread and wave-like central rib design ensure greater high-speed stability.

### WET GRIP

Sleek and wide shoulder grooves effectively drain water.

### CORNERING PERFORMANCE

Big shoulder blocks improve stability and handling to meet performance needs.

### DURABILITY

Curved grooves improve abrasion resistance and the rounded corners on the tread block edges protects the tire from damage.

RIM	SIZE	PR	LI	SS	XL OR NOT	SIDEWALL	STANDARD RINM	UTQG	MAX LOAD (kg)	PRESSURE (kpa)	PLANT
15	195/50R15		82	V		BSW	6J	180/AA/A	475	300	CN
15	195/55R15		89	V	XL	BSW	6J	180/AA/A	580	340	CN
17	215/45ZR17		91	W	XL	BSW	7J	180/AA/A	615	340	CN
18	265/35R18		97	W	XL	BSW	9 1/2J	180/AA/A	730	340	CN
18	225/40ZR18		92	W	XL	BSW	8J	180/AA/A	630	340	CN
18	235/40R18		95	W	XL	BSW	8 1/2J	180/AA/A	690	340	CN
18	255/50R18		106	V	XL	BSW	8J	180/AA/A	950	340	CN
18	255/55R18		109	V	XL	BSW	8J	180/AA/A	1030	340	CN

# ALL SEASON

---

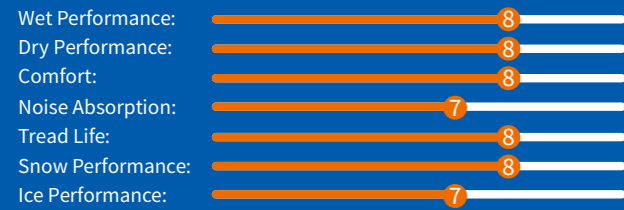
ATREZZO 4SEASONS	60
ATREZZO 4SEASONS PRO	62
ATREZZO 4SEASONS PRO EV	63
COMMERCIO 4 SEASONS	64



# ATREZZO

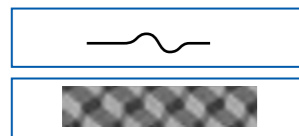
## 4 SEASONS

### PERFORMANCE RATINGS:



### FOUR SEASON PERFORMANCE

The unique 4 season asymmetric pattern is designed for use all year round. Zigzagged sipe and block design maximize grip in water and snow. The three main grooves quickly and effectively drain water and snow for a safer driving experience.



### ENHANCED PERFORMANCE

Newly introduced 3-dimensional grooves and sipes ensure optimal performance for the entire life of the tire.



RIM	SIZE	PR	LI	SS	XL OR NOT	SIDEWALL	STANDARD RINM	UTQG	MAX LOAD (kg)	PRESSURE (kpa)	PLANT
13	155/65R13		73	T		BSW	4 1/2J	300/A/A	365	300	CN
13	155/70R13		75	T		BSW	4.50B	300/A/A	387	300	CN
13	155/80R13		79	T		BSW	4 1/2J	300/A/A	437	300	CN
14	185/60R14		82	H		BSW	5 1/2J	300/A/A	475	300	CN
14	155/65R14		75	T		BSW	4 1/2J	300/A/A	387	300	CN
14	165/65R14		79	T		BSW	5J	300/A/A	437	300	CN
14	175/65R14		82	T		BSW	5J	300/A/A	475	300	CN
14	185/65R14		86	T		BSW	5 1/2J	300/A/A	530	300	CN
14	165/70R14		81	T		BSW	5J	300/A/A	462	300	CN
15	195/50R15		82	V		BSW	6J	300/A/A	475	300	CN
15	175/55R15		77	T		BSW	5 1/2J	300/A/A	412	300	CN
15	185/55R15		82	H		BSW	6J	300/A/A	475	300	CN
15	195/55R15		85	H		BSW	6J	300/A/A	515	300	CN
15	155/60R15		74	T		BSW	4 1/2J	300/A/A	375	300	CN
15	185/60R15		84	H		BSW	5 1/2J	300/A/A	500	300	CN
15	185/60R15		88	H	XL	BSW	5 1/2J	300/A/A	560	340	CN
15	195/60R15		88	H		BSW	6J	300/A/A	560	300	CN
15	165/65R15		81	T		BSW	5J	300/A/A	462	300	CN
15	175/65R15		84	H		BSW	5J	300/A/A	500	300	CN
15	175/65R15		88	H	XL	BSW	5J	300/A/A	560	340	CN
15	185/65R15		88	T		BSW	5 1/2J	300/A/A	560	300	CN
15	185/65R15		92	H	XL	BSW	5 1/2J	300/A/A	630	340	CN
15	195/65R15		91	H		BSW	6J	300/A/A	615	300	CN
15	195/65R15		91	T		BSW	6J	300/A/A	615	300	CN
15	195/65R15		95	T	XL	BSW	6J	300/A/A	690	340	CN
15	205/65R15		99	V	XL	BSW	6J	300/A/A	775	340	CN
16	195/45R16		84	V	XL	BSW	6 1/2J	300/A/A	500	340	CN
16	195/50R16		88	V	XL	BSW	6J	300/A/A	560	340	CN
16	195/55R16		87	V		BSW	6J	300/A/A	545	300	CN
16	195/55R16		91	V	XL	BSW	6J	300/A/A	615	340	CN
16	205/55R16		91	H		BSW	6 1/2J	300/A/A	615	300	CN
16	205/55R16		94	V	XL	BSW	6 1/2J	300/A/A	670	340	CN
16	215/55R16		93	H		BSW	7J	300/A/A	650	300	CN
16	215/55R16		97	V	XL	BSW	7J	300/A/A	730	340	CN
16	225/55R16		95	V		BSW	7J	300/A/A	690	300	CN
16	225/55R16		99	W	XL	BSW	7J	300/A/A	775	340	CN
16	205/60R16		92	V		BSW	6J	300/A/A	630	300	CN
16	205/60R16		96	V	XL	BSW	6J	300/A/A	710	340	CN
16	215/60R16		95	H		BSW	6 1/2J	300/A/A	690	300	CN
16	215/60R16		99	H	XL	BSW	6 1/2J	300/A/A	775	340	CN
16	215/65R16		102	V	XL	BSW	6 1/2J	300/A/A	850	340	CN
17	225/45R17		94	V	XL	BSW	7 1/2J	300/A/A	670	340	CN
17	225/45R17		94	W	XL	BSW	7 1/2J	300/A/A	670	340	CN
17	225/45ZR17		94	Y	XL	BSW	7 1/2J	300/A/A	670	340	CN



ALL-SEASON ULTRA HIGH PERFORMANCE TIRE



# ATREZZO

## 4 SEASONS PRO

# ATREZZO

## 4 SEASONS PRO | EV

### PERFORMANCE RATINGS



EV sizes of the 4Season Pro utilize a strengthened tread carcass that prepare the tire for the instant torque of electric vehicles caused when taking off or braking. This also improves overall handling and precision turning for an exceptional and safe driving experience.

The **Atrezzo 4Seasons Pro** is Sailun's all new All-Season SUV tire that offers wet braking and traction performance comparable to top brands. Equipped with the proprietary EcoPoint<sup>3</sup> compound technology, the tire offers the newest generation of sustainable performance along with performance improvements in rolling resistance, wear, noise, and grip.



### HANDLING AND BRAKING PERFORMANCE

This asymmetric tread pattern with an optimized contour and tread groove design effectively distributes ground pressure for improved stability on wet road surfaces. The tread's inner tread elements are designed to effectively funnel water out of the tire while the outer tread elements specialize in improving grip and handling all year around. Sipes located on the shoulder blocks improve grip for precision turning and braking performance.



### WINTER WEATHER PERFORMANCE

The tread pattern utilizes multi-angle sipes and grooves which help to efficiently expel water and snow from the tire. Tread block edges are equipped with angled edges which bite into snow and improve overall tread footprint for improved traction and braking performance.

RIM	SIZE	EV	LI	SS	XL OR NOT	SIDEWALL	STANDARD RINM	UTQG	MAX LOAD (kg)	PRESSURE (kpa)	PLANT
17	205/45ZR17	EV	88	Y	XL	BSW	7J	300/A/A	560	340	CN
17	215/45ZR17		91	Y	XL	BSW	7J	300/A/A	615	340	CN
17	235/45ZR17		97	W	XL	BSW	8J	300/A/A	730	340	CN
17	235/45ZR17		97	Y	XL	BSW	8J	300/A/A	730	340	CN
17	215/50ZR17	EV	95	W	XL	BSW	7J	300/A/A	690	340	CN
17	215/50ZR17		95	Y	XL	BSW	7J	300/A/A	690	340	CN
17	215/55R17	EV	98	W	XL	BSW	7J	300/A/A	750	340	CN
17	225/55ZR17		101	W	XL	BSW	7J	300/A/A	825	340	CN
17	225/55ZR17		101	Y	XL	BSW	7J	300/A/A	825	340	CN
17	235/55ZR17		103	W	XL	BSW	7 1/2J	300/A/A	875	340	CN
17	235/55ZR17		103	Y	XL	BSW	7 1/2J	300/A/A	875	340	CN
17	215/60R17		100	V	XL	BSW	6 1/2J	300/A/A	800	340	CN
17	225/60R17		103	V	XL	BSW	6 1/2J	300/A/A	875	340	CN
17	225/65R17		106	V	XL	BSW	6 1/2J	300/A/A	950	340	CN
18	225/40ZR18		92	Y	XL	BSW	8J	300/A/A	630	340	CN
18	245/40ZR18		97	W	XL	BSW	8 1/2J	300/A/A	730	340	CN
18	245/40ZR18		97	Y	XL	BSW	8 1/2J	300/A/A	730	340	CN
18	235/45ZR18	EV	98	W	XL	BSW	8J	300/A/A	750	340	CN
18	235/45ZR18		98	Y	XL	BSW	8J	300/A/A	750	340	CN
18	245/45ZR18		100	W	XL	BSW	8J	300/A/A	800	340	CN
18	245/45ZR18		100	Y	XL	BSW	8J	300/A/A	800	340	CN
18	215/55R18	EV	99	V	XL	BSW	7J	300/A/A	775	340	CN
18	225/55R18		102	V	XL	BSW	7J	300/A/A	850	340	CN
18	235/55R18		104	V	XL	BSW	7 1/2J	300/A/A	900	340	CN
18	255/55R18		109	W	XL	BSW	8J	300/A/A	1030	340	CN
18	235/60R18		107	W	XL	BSW	7J	300/A/A	975	340	CN
18	235/60R18	EV	103	W		BSW	7J	300/A/A	875	300	CN
19	225/55R19		103	W	XL	BSW	7J	300/A/A	875	340	CN
19	235/55R19	EV	105	W	XL	BSW	7 1/2J	300/A/A	925	340	CN





# COMMERCIO

## 4 SEASONS



### PERFORMANCE RATINGS:



#### WET PERFORMANCE

3D grooves and sipes provide excellent braking and traction performance on dry, wet, and snowy roads.



#### 4 SEASON PERFORMANCE

The unique, arrow-shaped tread block pattern with large grooves is designed for use year-round.

#### TIRE LIFE

The temperature-proof, grip and wear optimized tread compound provides high mileage and improved wear resistance.

#### IMPROVED CARRYING CAPACITY

Strong tiye casing design provides a reinforced load capacity.

RIM	SIZE	PR	LI	SS	XL OR NOT	SIDEWALL	STANDARD RINM	UTQG	MAX LOAD (kg)	PRESSURE (kpa)	PLANT
15	195/70R15C	8PR	104/102	T		BSW	6J		900/850	450	CN
15	215/70R15C	8PR	109/107	S		BSW	6 1/2J		1030/975	450	CN
15	225/70R15C	8PR	112/110	S		BSW	6 1/2J		1120/1060	450	CN
16	195/60R16C	6PR	99/97	H		BSW	6J		775/730	375	CN
16	215/60R16C	6PR	103/101	T		BSW	6 1/2J		875/825	375	CN
16	195/65R16C	8PR	104/102	T		BSW	6J		900/850	475	CN
16	205/65R16C	8PR	107/105	T		BSW	6J		975/925	475	CN
16	215/65R16C	8PR	109/107	T		BSW	6 1/2J		1030/975	475	CN
16	225/65R16C	8PR	112/110	T		BSW	6 1/2J		1120/1060	475	CN
16	235/65R16C	10PR	121/119	R		BSW	7J		1450/1360	575	CN
16	195/75R16C	10PR	110/108	R		BSW	5 1/2J		1060/1000	525	CN
16	205/75R16C	10PR	113/111	R		BSW	5 1/2J		1150/1090	525	CN
16	215/75R16C	10PR	116/114	R		BSW	6J		1250/1180	525	CN
16	225/75R16C	10PR	121/120	R		BSW	6J		1450/1400	575	CN
17	215/60R17C	8PR	109/107	T		BSW	6 1/2J		1030/975	475	CN

#### INCREASED SAFETY

Sidewall protection band offers extra protection from curb impacts and sidewall damage.



# SUV

---

TERRAMAX A/T	68
TERRAMAX AT4S	70
TERRAMAX AT-M	72
TERRAMAX CVR	74
TERRAMAX HLT	76
TERRAMAX M/T	78
TERRAMAX RT	80
TERRAMAX SV301	84
TURISMO SV57	86





ALL-TERRAIN PICKUP & SUV TIRE

# TERRAMAX A/T



## PERFORMANCE RATINGS:



The **TERRAMAX A/T** is designed to deliver superior traction for SUVs, pickups and vans both off and on road. The A/T provides exceptional handling and on-and-off-road stability while maintaining a comfortable ride.



### OFF-ROAD DURABILITY

The tread pattern effectively reduces stone retention and is capable of withstanding punctures from harsh road conditions, effectively protecting the tread from damage.

### EXTENDED LIFE

The staggered tread blocks promote even tread wear to increase tire life.

### CLAW-LIKE SHOULDER

The aggressive claw-like shoulder effectively dissipates heat for improved long-distance, high-speed travel.

### SIDEWALL SHIELD

A shield design at the rim protects the tire from collisions, impacts, and supports the sidewall.

### MOUNTAIN DESIGN

The protruding sidewall mountain design improves sidewall strength and abrasion resistance.

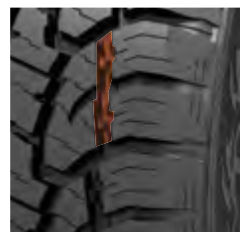


RIM	SIZE	PR	LI	SS	XL OR NOT	SIDEWALL	STANDARD RIM	UTQG	MAX LOAD (kg)	PRESSURE (kpa)	PLANT
15	30x9.50R15LT	6PR	104	S		OWL	7 1/2J		900	350	CN
15	235/70R15		103	S		OWL	7J	500/A/B	875	300	CN
15	265/70R15		112	S		OWL	8J	500/A/B	1120	300	CN
15	215/75R15		100	S		OWL	6J	500/A/B	800	300	CN
15	LT215/75R15	6PR	100/97	R		OWL	6J		800/730	350	CN
15	225/75R15C	6PR	110/108	S		OWL	6J		1060/1000	375	CN
15	LT235/75R15	6PR	104/101	R		OWL	6 1/2J		900/825	350	CN
15	235/75R15		109	S	XL	OWL	6 1/2J	500/A/B	1030	340	CN
15	31x10.50R15LT	6PR	109	S		OWL	8 1/2J		1030	350	CN
16	205R16C	8PR	110/108	Q		OWL	6J		1060/1000	450	CN
16	215/70R16		100	S		OWL	6 1/2J	500/A/A	800	300	CN
16	235/70R16		106	S		OWL	7J	500/A/B	950	300	CN
16	245/70R16		107	S		OWL	7J	500/A/B	975	300	CN
16	245/70R16		111	T	XL	OWL	7J	500/A/B	1090	340	CN
16	LT245/70R16	8PR	113/110	S		OWL	7J		1150/1060	450	CN
16	255/70R16		111	T		OWL	7 1/2J	500/A/A	1090	300	CN
16	265/70R16		112	T		OWL	8J	500/A/B	1120	300	CN
16	275/70R16		114	S		OWL	8J	500/A/B	1180	300	CN
16	LT225/75R16	10PR	115/112	S		BSW	6J		1215/1120	550	CN
16	245/75R16		111	S		OWL	7J	500/A/B	1090	300	CN
16	LT245/75R16	10PR	120/116	S		OWL	7J		1380/1260	550	CN
16	265/75R16		116	S		OWL	7 1/2J	500/A/B	1250	300	CN
16	LT265/75R16	10PR	123/120	S		OWL	7 1/2J		1550/1400	550	CN
16	LT285/75R16	10PR	126/123	R		OWL	8J		1700/1550	550	CN
16	LT235/85R16	10PR	120/116	R		BSW	6 1/2J		1380/1260	550	CN
17	225/65R17		102	T		OWL	6 1/2J	500/A/A	850	300	CN
17	235/65R17		104	S		OWL	7J	500/A/B	900	300	CN
17	245/65R17		107	S		OWL	7J	500/A/B	975	300	CN
17	265/65R17		112	S		OWL	8J	500/A/B	1120	300	CN
17	275/65R17		115	S		OWL	8J	500/A/B	1215	300	CN
17	285/65R17		116	T		OWL	8 1/2J		1250	300	CN
17	245/70R17		110	T		OWL	7J	500/A/B	1060	300	CN
17	LT245/70R17	10PR	119/116	S		OWL	7J		1360/1250	550	CN
17	265/70R17		115	S		OWL	8J	500/A/B	1215	300	CN
17	LT265/70R17	10PR	121/118	S		OWL	8J		1450/1320	550	CN
17	LT285/70R17	10PR	121/118	R		OWL	8 1/2J		1450/1320	550	CN
17	LT245/75R17	10PR	121/118	S		OWL	7J		1450/1320	550	CN
17	LT235/80R17	10PR	120/117	R		OWL	6 1/2J		1400/1285	550	CN
18	235/60R18		107	T	XL	BSW	7J	500/A/A	975	340	CN
18	265/60R18		110	T		BSW	8J	500/A/B	1060	300	CN
18	LT285/60R18	8PR	118/115	S		OWL	8 1/2J		1320/1215	450	CN
18	LT325/60R18	10PR	124/121	S		OWL	9 1/2J		1600/1450	450	CN
18	265/65R18		114	T		OWL	8J	500/A/B	1180	300	CN
18	275/65R18		116	T		OWL	8J	500/A/B	1250	300	CN
18	LT275/65R18	10PR	123/120	R		OWL	8J		1550/1400	550	CN
18	LT305/65R18	10PR	124/121	S		OWL	9J		1600/1450	450	CN
18	LT265/70R18	10PR	124/121	R		BSW	8J		1600/1450	550	CN
18	LT275/70R18	10PR	125/122	R		OWL	8J		1650/1500	550	CN
19	255/55R19		111	H	XL	BSW	8J	500/A/A	1090	340	CN
20	265/50R20		111	T	XL	OWL	8 1/2J	500/A/B	1090	340	CN
20	275/55R20		117	T	XL	BSW	8 1/2J	500/A/B	1285	340	CN
20	LT275/55R20	10PR	120/117	S		OWL	8 1/2J		1400/1285	550	CN
20	LT305/55R20	10PR	121/118	R		BSW	9 1/2J		1450/1320	450	CN
20	LT265/60R20	10PR	121/118	R		BSW	8J		1450/1320	550	CN
20	275/60R20		115	T		BSW	8J	500/A/B	1215	300	CN
20	LT275/60R20	10PR	123/120	R		BSW	8J		1550/1400	550	CN
20	LT325/60R20	10PR	126/123	R		OWL	9 1/2J		1700/1550	450	CN
20	LT275/65R20	10PR	126/123	R		BSW	8J		1700/1550	550	CN



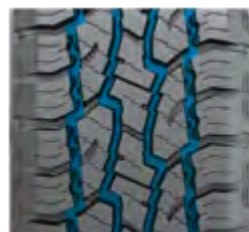
# TERRAMAX AT4S

## PERFORMANCE RATINGS:



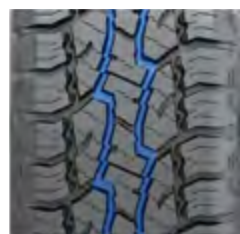
### OFF-ROAD DURABILITY

The anti-stone lodging design effectively discharges stones, withstands harsh road conditions, and protects the tread from damage.



### 4S DESIGN

The trapezoidal claw design improves traction in snow and mud, enhances shoulder heat dissipation, and strengthens overall tire durability.



### OFF-ROAD GRIP

The central zigzag tread block provides outstanding grip and traction performance.



### OFF-ROAD STABILITY

The open shoulder design increases stability and traction when turning at high speeds in both dry and wet weather.

RIM	SIZE	PR	LI	SS	XL OR NOT	SIDEWALL	STANDARD RINM	UTQG	MAX LOAD (kg)	PRESSURE (kpa)	PLANT
15	235/75R15		109	S	XL	OWL	6 1/2J	500/A/B	1030	340	VN/KH
15	31x10.50R15LT	6PR	109	S		OWL	8 1/2J		1030	350	KH
16	235/70R16		106	S		OWL	7J	500/A/B	950	300	VN/KH
16	245/70R16		106	T		BSW	7J	500/A/B	950	300	KH
16	255/70R16		109	T		BSW	7 1/2J	500/A/B	1030	300	KH
16	265/70R16		112	T		OWL	8J	500/A/B	1120	300	VN/KH
16	LT225/75R16	10PR	115/112	S		BSW	6J		1215/1120	550	VN/KH
16	245/75R16		111	S		OWL	7J	500/A/B	1090	300	VN/KH
16	LT245/75R16	10PR	120/116	S		BSW	7J		1380/1260	550	KH
16	265/75R16		116	S		OWL	7 1/2J	500/A/B	1250	300	VN/KH
16	LT265/75R16	10PR	123/120	S		OWL	7 1/2J		1550/1400	550	KH
16	LT285/75R16	8PR	122/119	R		OWL	8J		1500/1360	450	KH
16	LT285/75R16	10PR	126/123	S		OWL	8J		1700/1550	550	KH
16	LT235/85R16	10PR	120/116	S		BSW	6 1/2J		1380/1260	550	VN/KH
17	245/65R17		107	S		OWL	7J	500/A/B	975	300	VN/KH
17	265/65R17		112	S		OWL	8J	500/A/B	1120	300	VN/KH
17	245/70R17		108	T		BSW	7J	500/A/B	1000	300	KH
17	LT245/70R17	10PR	119/116	S		OWL	7J		1360/1250	550	VN/KH
17	255/70R17		110	T		BSW	7 1/2J	500/A/B	1060	300	KH
17	265/70R17		115	S		OWL	8J	500/A/B	1215	300	VN/KH
17	LT265/70R17	10PR	121/118	S		OWL	8J		1450/1320	550	VN/KH
17	LT285/70R17	8PR	121/118	R		OWL	8 1/2J		1450/1320	450	KH
17	LT285/70R17	10PR	121/118	S		OWL	8 1/2J		1450/1320	550	VN/KH
17	LT245/75R17	10PR	121/118	S		OWL	7J		1450/1320	550	VN/KH
17	LT235/80R17	10PR	120/117	R		OWL	6 1/2J		1400/1285	550	VN/KH
18	265/65R18		114	S		BSW	8J	500/A/B	1180	300	KH
18	275/65R18		116	T		OWL	8J	500/A/B	1250	300	VN/KH
18	LT275/65R18	10PR	123/120	S		OWL	8J		1550/1400	550	VN/KH
18	LT305/65R18	10PR	124/121	R		BSW	9J		1600/1450	450	VN/KH
18	LT325/65R18	10PR	127/124	R		BSW	9 1/2J		1750/1600	450	VN/KH
18	LT265/70R18	10PR	124/121	R		BSW	8J		1600/1450	550	VN/KH
18	LT275/70R18	10PR	125/122	R		OWL	8J		1650/1500	550	VN/KH
20	275/55R20		117	T	XL	BSW	8 1/2J	500/A/B	1285	340	VN/KH
20	LT275/55R20	10PR	120/117	R		BSW	8 1/2J		1400/1285	550	VN/KH
20	LT305/55R20	10PR	121/118	R		BSW	9 1/2J		1450/1320	450	VN/KH
20	275/60R20		115	T		BSW	8J	500/A/B	1215	300	KH
20	LT275/60R20	10PR	123/120	R		BSW	8J		1550/1400	550	VN/KH
20	LT325/60R20	10PR	126/123	R		BSW	9 1/2J		1700/1550	450	VN/KH
20	LT275/65R20	10PR	126/123	S		BSW	8J		1700/1550	550	VN/KH



ALL-TERRAIN LIGHT TRUCK & SUV TIRE

# TERRAMAX AT-M



## PERFORMANCE RATINGS:



### TRACTION PERFORMANCE

Widened running surface ensures superior traction performance in all types of road surfaces.

### OFF-ROAD CLIMBING

Tread blocks maintain a staggered bite to improve traction and climbing ability.

### OFF-ROAD GRIP

Widened shoulder grooves and nodules within the tread grooves effectively eject mud, sand, gravel, and other debris to improve grip.

### OFF-ROAD DURABILITY

Lengthened tread shoulder employs a multi-layered protruding design that improves strength and prevents damage to the carcass, allowing for a safe off-roading experience.

RIM	SIZE	PR	LI	SS	XL OR NOT	SIDEWALL	STANDARD RINM	UTQG	MAX LOAD (kg)	PRESSURE (kpa)	PLANT
15	31x10.50R15LT	6PR	109	S		OWL	8 1/2J		1030	350	VN
16	245/70R16		107	S		OWL	7J	500/A/B	975	300	VN
16	265/70R16		112	T		OWL	8J	500/A/B	1120	300	VN
17	265/65R17		112	S		OWL	8J	500/A/B	1120	300	VN
18	265/60R18		110	T		RWL	8J	500/A/B	1060	300	VN
18	265/60R18		110	T		BSW	8J	500/A/B	1060	300	VN
20	265/50R20		111	T	XL	RWL	8 1/2J	500/A/B	1090	340	VN
20	265/50R20		111	T	XL	BSW	8 1/2J	500/A/B	1090	340	VN
20	275/55R20		117	T	XL	RWL	8 1/2J	500/A/B	1285	340	VN
20	275/55R20		117	T	XL	BSW	8 1/2J	500/A/B	1285	340	VN



# TERRAMAX CVR



## PERFORMANCE RATINGS:



The **TERRAMAX CVR** is an all-season tire specifically engineered for SUVs and crossovers. The CVR delivers exceptional handling and stability for today's crossover vehicles without compromising driving comfort.



### DRIVING STABILITY

Large shoulder blocks and center ribs provide responsiveness and high speed stability.



### IMPROVED GRIP

Wide tread design offers a larger ground contact area which effectively improves grip performance.



### DRIVING COMFORT

Tread design offers greater driving comfort and reduces noise emissions.

### WET PERFORMANCE

Four main grooves and small winding lateral grooves reduce rolling resistance and effectively drain water for improved hydroplaning resistance.

### EXTENDED LIFE

The strong casing and special tread compound increases service life, driving comfort and overall driving performance.

RIM	SIZE	PR	LI	SS	XL OR NOT	SIDEWALL	STANDARD RINM	UTQG	MAX LOAD (kg)	PRESSURE (kpa)	PLANT
15	205/70R15		96	H		BSW	6J	440/A/A	710	300	CN
15	225/70R15		100	H		BSW	6 1/2J	500/A/B	800	300	CN
15	255/70R15		108	T		BSW	7 1/2J	500/A/B	1000	300	CN
15	215/75R15		100	S		BSW	6J	500/A/B	800	300	CN
15	225/75R15		102	S		BSW	6J	500/A/B	850	300	CN
15	235/75R15		105	T		BSW	6 1/2J	500/A/B	925	300	CN
16	235/60R16		100	H		BSW	7J	440/A/A	800	300	CN
16	215/65R16		102	H	XL	BSW	6 1/2J	440/A/A	850	340	CN
16	215/70R16		100	H		BSW	6 1/2J	440/A/A	800	300	CN
16	225/70R16		103	H		BSW	6 1/2J	500/A/B	875	300	CN
16	235/70R16		106	H		BSW	7J	440/A/A	950	300	CN
16	245/70R16		111	H	XL	BSW	7J	440/A/A	1090	340	CN
16	255/70R16		111	T		BSW	7 1/2J	500/A/B	1090	300	CN
16	265/70R16		112	H		BSW	8J	440/A/A	1120	300	CN
16	275/70R16		114	T		BSW	8J	500/A/B	1180	300	CN
16	245/75R16		111	T		BSW	7J	500/A/B	1090	300	CN
16	265/75R16		116	T		BSW	7 1/2J	500/A/B	1250	300	CN
17	235/55R17		103	V	XL	BSW	7 1/2J	420/A/A	875	340	CN
17	215/60R17		96	H		BSW	6 1/2J	440/A/A	710	300	CN
17	225/60R17		99	H		BSW	6 1/2J	440/A/A	775	300	CN
17	225/65R17		102	H		BSW	6 1/2J	440/A/A	850	300	CN
17	235/65R17		108	H	XL	BSW	7J	440/A/A	1000	340	CN
17	245/65R17		107	T		BSW	7J	500/A/B	975	300	CN
17	265/65R17		112	T		BSW	8J	500/A/B	1120	300	CN
17	275/65R17		115	T		BSW	8J	500/A/B	1215	300	CN
17	285/65R17		116	T		BSW	8 1/2J	500/A/B	1250	300	CN
17	245/70R17		110	T		BSW	7J	500/A/B	1060	300	CN
17	265/70R17		115	T		BSW	8J	500/A/B	1215	300	CN
18	225/55R18		98	V		BSW	7J	420/A/A	750	300	CN
18	235/55R18		100	V		BSW	7 1/2J	420/A/A	800	300	CN
18	255/55R18		109	V	XL	BSW	8J	420/A/A	1030	340	CN
18	235/60R18		103	V		BSW	7J	440/A/A	875	300	CN
18	245/60R18		105	H		BSW	7J	500/A/A	925	300	CN
18	265/60R18		110	T		BSW	8J	500/A/B	1060	300	CN
18	285/60R18		116	T		BSW	8 1/2J	500/A/B	1250	300	CN
18	235/65R18		106	T		BSW	7J	500/A/B	950	300	CN
18	255/65R18		111	T		BSW	7 1/2J	500/A/B	1090	300	CN
18	265/65R18		112	T		BSW	8J	500/A/B	1120	300	CN
18	275/65R18		116	T		BSW	8J	500/A/B	1250	300	CN
18	255/70R18		113	T		BSW	7 1/2J	500/A/B	1150	300	CN
19	235/50ZR19		99	W		BSW	7 1/2J	420/A/A	775	300	CN
19	255/50R19		107	V	XL	BSW	8J	420/A/A	975	340	CN
19	225/55R19		99	V		BSW	7J	420/A/A	775	300	CN
19	235/55R19		101	V		BSW	7 1/2J	420/A/A	825	300	CN
19	245/55R19		103	V		BSW	7 1/2J	420/A/A	875	300	CN
20	245/50R20		102	H		BSW	7 1/2J	500/A/A	850	300	CN
20	255/50R20		109	W	XL	BSW	8J	420/A/A	1030	340	CN



# TERRAMAX HLT



## PERFORMANCE RATINGS:



### OVERALL PERFORMANCE

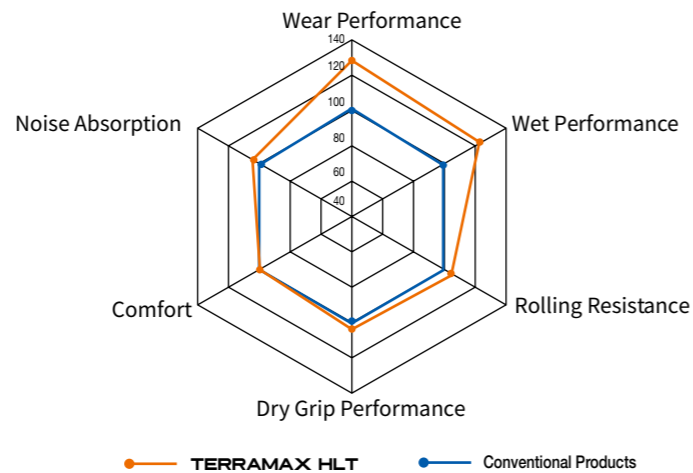
The large tread block design effectively increases the ground contact area of the tire to improve overall handling, wear and grip performance.

### WET PERFORMANCE

Four wide main grooves enhance directional stability and water drainage to allow for excellent handling and traction on wet and dry roads.

### DRIVING COMFORT

The pattern pitch arrangement effectively reduces noise to create a quieter driving experience.



RIM	SIZE	PR	LI	SS	XL OR NOT	SIDEWALL	STANDARD RINM	UTQG	MAX LOAD (kg)	PRESSURE (kpa)	PLANT
15	185/60R15C	6PR	94/92	T		BSW	5 1/2J		670/630	375	VN/KH
15	205/65R15C	6PR	102/100	T		BSW	6J		850/800	375	VN/KH
15	195/70R15C	8PR	104/102	R		BSW	6J		900/850	450	VN/KH
15	235/75R15		105	T		OWL	6 1/2J	600/A/A	925	300	VN/KH
16	215/55R16		97	T	XL	BSW	7J	600/A/A	730	340	VN/KH
16	235/65R16C	10PR	121/119	R		BSW	7J		1450/1360	575	VN/KH
16	215/70R16		100	H		BSW	6 1/2J	600/A/A	800	300	KH
16	235/70R16		106	T		OWL	7J	600/A/A	950	300	VN/KH
16	245/70R16		107	T		OWL	7J	600/A/A	975	300	VN/KH
16	255/70R16		111	T		OWL	7 1/2J	600/A/A	1090	300	VN/KH
16	265/70R16		112	T		OWL	8J	600/A/A	1120	300	VN/KH
16	195/75R16C	8PR	107/105	R		BSW	5 1/2J		975/925	475	VN/KH
16	LT225/75R16	10PR	115/112	R		BSW	6J		1215/1120	550	KH
16	225/75R16C	10PR	121/120	R		BSW	6J		1450/1400	575	VN/KH
16	245/75R16		111	T		OWL	7J	600/A/A	1090	300	VN/KH
16	LT245/75R16	10PR	120/116	R		OWL	7J		1380/1260	550	KH
16	265/75R16		116	T		OWL	7 1/2J	600/A/A	1250	300	VN/KH
16	LT265/75R16	10PR	123/120	S		OWL	7 1/2J		1550/1400	550	VN/KH
16	LT215/85R16	10PR	115/112	R		BSW	6J		1215/1120	550	VN/KH
16	LT235/85R16	10PR	120/116	R		BSW	6 1/2J		1380/1260	550	KH
17	225/65R17		102	H		BSW	6 1/2J	600/A/A	850	300	KH
17	235/65R17		104	T		OWL	7J	600/A/A	900	300	VN/KH
17	245/65R17		107	T		OWL	7J	600/A/A	975	300	VN/KH
17	265/65R17		112	S		BSW	8J	600/A/A	1120	300	KH
17	245/70R17		110	T		OWL	7J	600/A/A	1060	300	VN/KH
17	LT245/70R17	10PR	119/116	S		OWL	7J		1360/1250	550	VN/KH
17	265/70R17		115	T		OWL	8J	600/A/A	1215	300	VN/KH
17	LT265/70R17	10PR	121/118	S		OWL	8J		1450/1320	550	VN/KH
17	235/75R17		109	T		BSW	6 1/2J	600/A/A	1030	300	VN/KH
17	LT245/75R17	10PR	121/118	S		OWL	7J		1450/1320	550	VN/KH
17	LT235/80R17	10PR	120/117	R		BSW	6 1/2J		1400/1285	550	VN/KH
18	235/55R18		100	V		BSW	7 1/2J	600/A/A	800	300	KH
18	255/55R18		109	V	XL	BSW	8J	600/A/A	1030	340	KH
18	235/60R18		103	H		BSW	7J	600/A/A	875	300	KH
18	245/60R18		105	H		BSW	7J	600/A/A	925	300	KH
18	265/60R18		110	H		BSW	8J	600/A/A	1060	300	KH
18	235/65R18		106	H		BSW	7J	600/A/A	950	300	KH
18	255/65R18		111	S		BSW	7 1/2J	600/A/A	1090	300	KH
18	265/65R18		114	T		BSW	8J	600/A/A	1180	300	KH
18	275/65R18		116	T		OWL	8J	600/A/A	1250	300	VN/KH
18	LT275/65R18	10PR	123/120	S		OWL	8J		1550/1400	550	VN/KH
18	265/70R18		116	T		BSW	8J	600/A/A	1250	300	KH
18	LT265/70R18	10PR	124/121	S		BSW	8J		1600/1450	550	VN/KH
18	LT275/70R18	10PR	125/122	S		OWL	8J		1650/1500	550	VN/KH
19	235/55R19		101	H		BSW	7 1/2J	600/A/A	825	300	KH
19	245/55R19		103	S		BSW	7 1/2J	600/A/A	875	300	KH
19	255/60R19		109	H		BSW	7 1/2J	600/A/A	1030	300	KH
20	245/50R20		102	H		BSW	7 1/2J	600/A/A	850	300	KH
20	255/50R20		105	H		BSW	8J	600/A/A	925	300	KH
20	265/50R20		107	H		BSW	8 1/2J	600/A/B	975	300	KH
20	265/50R20		107	V		BSW	8 1/2J	600/A/A	975	300	KH
20	235/55R20		102	H		BSW	7 1/2J	600/A/A	850	300	KH
20	255/55R20		107	H		BSW	8J	600/A/A	975	300	KH
20	275/55R20		117	T	XL	BSW	8 1/2J	600/A/A	1285	340	KH
20	245/60R20		107	H		BSW	7J	600/A/A	975	300	KH
20	275/60R20		115	T		BSW	8J	600/A/A	1215	300	KH
20	LT275/65R20	10PR	126/123	S		BSW	8J		1700/1550	550	VN/KH
22	285/45R22		114	H	XL	BSW	9 1/2J	600/A/A	1180	340	KH



MUD-TERRAIN LIGHT TRUCK & SUV TIRE

# TERRAMAX M/T



## PERFORMANCE RATINGS:



### OFF-ROAD PERFORMANCE

The z-shaped grooves between blocks are designed to enhance off-road driving capabilities by improving grip and climbing ability.

### OFF-ROAD GRIP

Deep grooves allow mud to easily be discharged from the tread at both high and low speeds. The design also offers better grip when traveling on rocky or rugged roads.

### OFF-ROAD STABILITY

Large blocks on the shoulder vastly enhance handling on muddy and rock roads.

### OFF-ROAD DURABILITY

The shield pattern which extends from the sidewall protects the sidewall from abrasions and increases traction on mud. The carcass is designed with three layers of polyester fabric to make it rugged and resistant to strong impacts.



RIM	SIZE	PR	LI	SS	XL OR NOT	SIDEWALL	STANDARD RIM	UTQG	MAX LOAD (kg)	PRESSURE (kpa)	PLANT
15	LT235/75R15	6PR	104/101	Q		OWL	6 1/2J		900/825	350	CN
15	30x9.50R15LT	6PR	104	Q		OWL	7 1/2J		900	350	CN
15	33x12.50R15LT	6PR	108	Q		OWL	10J		1000	250	CN
15	31x10.50R15LT	6PR	109	Q		OWL	8 1/2J		1030	350	CN
15	35x12.50R15LT	6PR	113	Q		OWL	10J		1150	250	CN
16	LT265/70R16	10PR	121/118	Q		OWL	8J		1450/1320	550	CN
16	LT245/75R16	10PR	120/116	Q		OWL	7J		1380/1260	550	CN
16	LT265/75R16	10PR	123/120	Q		OWL	7 1/2J		1550/1400	550	CN
16	LT235/85R16	10PR	120/116	Q		OWL	6 1/2J		1380/1260	550	CN
17	LT265/65R17	10PR	120/117	Q		OWL	8J		1400/1285	550	CN
17	LT265/70R17	10PR	121/118	Q		OWL	8J		1450/1320	550	CN
17	LT285/70R17	10PR	121/118	Q		OWL	8 1/2J		1450/1320	550	CN
17	33x12.50R17LT	8PR	114	Q		OWL	10J		1180	350	CN
17	35x12.50R17LT	10PR	121	Q		OWL	10J		1450	450	CN
18	LT265/65R18	8PR	117/114	Q		OWL	8J		1285/1180	450	CN
18	33x12.50R18LT	10PR	118	Q		BSW	10J		1320	450	CN
18	35x12.50R18LT	10PR	123	Q		BSW	10J		1550	450	CN
20	LT305/55R20	10PR	121/118	Q		BSW	9 1/2J		1450/1320	450	CN
20	33x12.50R20LT	10PR	114	Q		BSW	10J		1180	450	CN
20	35x12.50R20LT	10PR	121	Q		BSW	10J		1450	450	CN



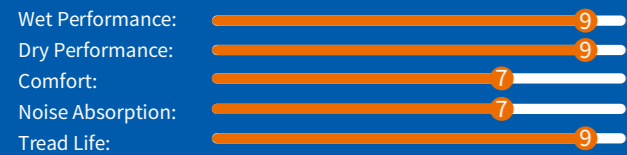


LIGHT TRUCK & SUV TIRE

# TERRAMAX RT



## PERFORMANCE RATINGS



The **Terramax RT** is a hybrid tire for trucks and SUVs that brings together the off-road capabilities and rugged look of an MT tire with more of the driving comfort expected from an AT tire. The 3PMSF advance snow rating makes this tire a great choice for taking on daily tasks, ice and snow, as well as mud covered trails.



### TREAD CONTOUR

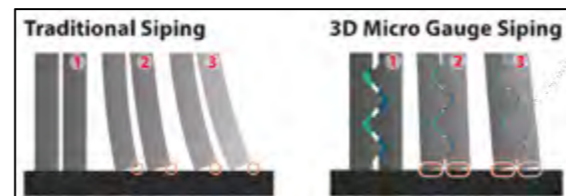
The wide tread increases tire to road contact area for improved handling stability while also evenly distributing ground pressure to promote even wear.

### HYBRID DESIGN

The central tread blocks are durable and maintain extreme angle variations to improve traction and responsiveness. Open shoulder and stone ejectors improve performance on various road conditions by effectively funneling mud, snow, and sand. The varying shoulder design improves traction in mud and sand.

### ALL-WEATHER TRACTION

The tread compound improves abrasion resistance while also being able to improve traction in dry, wet, and winter road conditions. Tread block sipes improve grip on snow and ice. Wide and deep grooves effectively funnel mud, water, and snow for improved safety. Studdable with TSMI #15 studs that offer even better performance in extreme winter weather conditions.



### SIDEWALL PROTECTOR

An aggressive, shield-like design helps to protect the tire sidewall from abrasions and punctures as well as offer extra traction in off-road applications.

### STRENGTHENED DESIGN

Utilizing a strong polyester, and three layer carcass in some LT sizes, this tire is designed to take strong impacts for greater safety in off-road applications.

### HIGHWAY COMFORT

Through noise testing analysis, the tread has been optimized to reduce noise vibrations for a more comfortable and quiet drive on highways.



ALL-TERRAIN LIGHT TRUCK & SUV TIRE

# TERRAMAX RT



## PERFORMANCE RATINGS



RIM	SIZE	PR	LI	SS	XL OR NOT	SIDEWALL	STANDARD RINM	UTQG	MAX LOAD (kg)	PRESSURE (kpa)	PLANT
15	33x12.50R15LT	6PR	108	Q		OWL	10J		1000	250	KH
15	LT235/75R15	6PR	104/101	Q		OWL	6 1/2J		900	350	KH
15	31x10.50R15LT	6PR	109	Q		OWL	8 1/2J		1030	350	KH
15	35x12.50R15LT	6PR	113	Q		OWL	10J		1150	250	KH
16	245/70R16		111	Q	XL	OWL	7J	600/A/B	1090	340	KH
16	265/70R16		112	Q		OWL	8J	600/A/B	1120	300	KH
16	265/75R16		116	Q		OWL	7 1/2J	600/A/B	1250	300	KH
16	LT285/75R16	10PR	126/123	Q		OWL	8J		1700	550	KH
16	LT185/85R16	8PR	105/103	N		OWL	5J		925	450	KH
17	33x12.50R17LT	10PR	120	Q		BSW	10J		1400	450	KH
17	265/65R17		112	Q		RWL	8J	600/A/B	1120	300	KH
17	LT265/65R17	10PR	120/117	Q		RWL	8J		1400	550	KH
17	LT245/70R17	10PR	119/116	Q		BSW	7J		1360	550	KH
17	265/70R17		115	Q		OWL	8J	600/A/B	1215	300	KH
17	265/70R17		115	T		BSW	8J	600/A/B	1215	300	KH
17	LT265/70R17	10PR	123/120	Q		BSW	8J		1550	550	KH
17	LT265/70R17	10PR	123/120	Q		OWL	8J		1550	550	KH
17	LT285/70R17	10PR	126/123	Q		BSW	8 1/2J		1700	550	KH
17	LT285/70R17	10PR	126/123	Q		OWL	8 1/2J		1700	550	KH
17	35x12.50R17LT	10PR	125	Q		BSW	10J		1650	450	KH
17	LT245/75R17	10PR	121/118	Q		BSW	7J		1450	550	KH
17	37x12.50R17LT	8PR	124	Q		BSW	10J		1600	350	KH

RIM	SIZE	PR	LI	SS	XL OR NOT	SIDEWALL	STANDARD RINM	UTQG	MAX LOAD (kg)	PRESSURE (kpa)	PLANT
18	265/60R18		114	Q	XL	RWL	8J	600/A/B	1180	340	KH
18	265/60R18		114	S	XL	BSW	8J	600/A/B	1180	340	KH
18	285/60R18		116	Q		RWL	8 1/2J	600/A/B	1250	300	KH
18	33x12.50R18LT	12PR	122	Q		BSW	10J		1500	550	KH
18	265/65R18		116	Q	XL	RWL	8J	600/A/B	1250	340	KH
18	265/65R18		116	T	XL	BSW	8J	600/A/B	1250	340	KH
18	LT265/65R18	10PR	122/119	Q		BSW	8J		1500	550	KH
18	275/65R18		116	T	XL	BSW	8J	600/A/B	1250	340	KH
18	LT275/65R18	10PR	123/120	Q		BSW	8J		1550	550	KH
18	LT275/65R18	10PR	123/120	Q		RWL	8J		1550	550	KH
18	35x12.50R18LT	12PR	128	Q		BSW	10J		1800	550	KH
18	255/70R18		116	T	XL	BSW	7 1/2J	600/A/B	1250	340	KH
18	265/70R18		116	S		BSW	8J	600/A/B	1250	300	KH
18	LT265/70R18	10PR	124/121	Q		BSW	8J		1600	550	KH
18	LT275/70R18	10PR	125/122	Q		BSW	8J		1650	550	KH
18	LT275/70R18	10PR	125/122	Q		OWL	8J		1650	550	KH
20	265/50R20		111	Q	XL	RWL	8 1/2J	600/A/B	1090	340	KH
20	265/50R20		111	T	XL	BSW	8 1/2J	600/A/B	1090	340	KH
20	285/50R20		116	Q	XL	RWL	9J	600/A/B	1250	340	KH
20	275/55R20		117	Q	XL	RWL	8 1/2J	600/A/B	1285	340	KH
20	275/55R20		117	T	XL	BSW	8 1/2J	600/A/B	1285	340	KH
20	LT275/55R20	10PR	120/117	Q		BSW	8 1/2J		1400	550	KH
20	LT275/55R20	10PR	120/117	Q		RWL	8 1/2J		1400	550	KH
20	285/55R20		119	Q	XL	RWL	9J	600/A/B	1360	340	KH
20	LT305/55R20	12PR	125/122	Q		BSW	9 1/2J		1650	550	KH
20	275/60R20		116	T	XL	BSW	8J	600/A/B	1250	340	KH
20	35x12.50R20LT	12PR	125	Q		BSW	10J		1650	550	KH
20	LT275/65R20	10PR	126/123	Q		BSW	8J		1700	550	KH
20	37x12.50R20LT	10PR	126	Q		BSW	10J		1700	450	KH
22	33x12.50R22LT	12PR	114	Q		BSW	10J		1180	550	KH
22	285/45R22		114	Q	XL	BSW	9 1/2J	600/A/B	1180	340	KH



ULTRA HIGH PERFORMANCE SUV TIRE

# TERRAMAX SV301



## PERFORMANCE RATINGS:



### IMPROVED TRACTION

Continuous central rib design offers excellent safety by improving traction for greater acceleration and braking performance.



### FUEL ECONOMY

The tread formula improves fuel economy by reducing the tire's rolling resistance.



### DRIVING COMFORT

Reduce tire noise emissions for a more comfortable driving experience.

### WET DRIVING

Improved handling performance on wet roads due to the main shoulder grooves designed to efficiently expel water.

RIM	SIZE	PR	LI	SS	XL OR NOT	SIDEWALL	STANDARD RINM	UTQG	MAX LOAD (kg)	PRESSURE (kpa)	PLANT
18	235/60R18		103	H		BSW	7J	420/A/A	875	300	CN
20	235/45R20		100	W	XL	BSW	8J	420/A/A	800	340	CN
20	255/45R20		101	V		BSW	8 1/2J	420/A/A	825	300	CN



ULTRA HIGH PERFORMANCE SUV TIRE

# TURISMO SV57



## PERFORMANCE RATINGS:



### WET PERFORMANCE

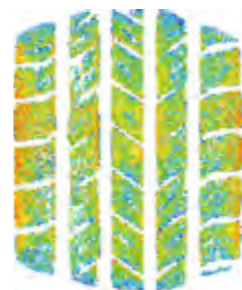
The tread groove design effectively expels water while the sipes break through water film on the road surface for overall better grip and driving performance on wet roads.

### HANDLING AND SAFETY

Wide tread design improves the ground contact area for a more even pressure distribution, thus improving handling, grip, and stability.

### IMPROVED MILEAGE

Tread formula increases tread wear resistance while the enhanced carcass improves load capacity, overall increase tire life.



RIM	SIZE	PR	LI	SS	XL OR NOT	SIDEWALL	STANDARD RINM	UTQG	MAX LOAD (kg)	PRESSURE (kpa)	PLANT
15	215/70R15		98	H		BSW	6 1/2J	460/A/A	750	300	CN
15	205/75R15		97	T		WR	5 1/2J	460/A/A	730	300	CN
16	215/65R16		98	H		BSW	6 1/2J	460/A/A	750	300	CN
16	215/70R16		100	H		BSW	6 1/2J	460/A/A	800	300	CN
17	235/55R17		103	V	XL	BSW	7 1/2J	460/A/A	875	340	CN
17	215/60R17		100	H	XL	BSW	6 1/2J	460/A/A	800	340	CN
17	235/60R17		102	H		BSW	7J	460/A/A	850	300	CN
17	215/65R17		99	H		BSW	6 1/2J	460/A/A	775	300	CN
17	225/65R17		102	H		BSW	6 1/2J	460/A/A	850	300	CN
17	235/65R17		108	V	XL	BSW	7J	460/A/A	1000	340	CN
18	215/55R18		95	V		BSW	7J	460/A/A	690	300	CN
18	225/60R18		100	V		BSW	6 1/2J	460/A/A	800	300	CN
18	235/60R18		103	V		BSW	7J	460/A/A	875	300	CN
18	245/60R18		105	V		BSW	7J	460/A/A	925	300	CN
18	235/65R18		106	H		BSW	7J	460/A/A	950	300	CN

## LTC

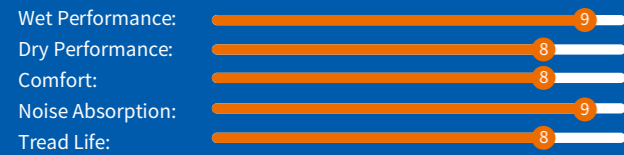
COMMERCIO PRO	90
Commercio vx3	92
COMMERCIO VX+	94
EXTMILE SL15	96
EXTMILE SL16	97
ENDURE SL18	98
EXTMILE SL87	100
EXTMILE SL87N	101



# COMMERCIO PRO



## PERFORMANCE RATINGS



The **COMMERCIO PRO** is the next generation of the COMMERCIO VX1 and is specifically designed for commercial vehicles in the European market. This new generation tyre improves upon load bearing capabilities, durability, driving comfort and safety.



## SAFETY

The improved sidewall design improves impact and puncture resistance for overall improved safety.



## HANDLING

Less tread block sipes improve block rigidity for better wear resistance while also increasing the ground contact area of the tire for improved handling performance. Even tread pressure distribution promotes even treadwear and improves durability.



## DURABILITY

Improved bead structure design effectively increases bead rigidity and reduces heat-buildup for overall better durability and load bearing capabilities.



## DRIVING COMFORT

The connected shoulder grooves and optimized tread pitch effectively reduce noise vibrations and improve driving comfort.

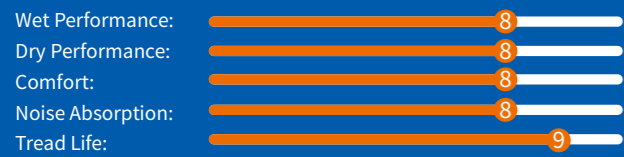
RIM	SIZE	PR	LI	SS	XL OR NOT	SIDEWALL	STANDARD RIM	UTQG	MAX LOAD (kg)	PRESSURE (kpa)	PLANT
14	175/65R14C	6PR	90/88	T		BSW	5J		600/560	375	CN
15	205/65R15C	6PR	102/100	T		BSW	6J		850/800	375	CN
15	215/65R15C	6PR	104/102	T		BSW	6 1/2J		900/850	375	CN
15	195/70R15C	8PR	104/102	R		BSW	6J		900/850	450	CN
15	205/70R15C	8PR	106/104	R		BSW	6J		950/900	450	CN
15	215/70R15C	8PR	109/107	S		BSW	6 1/2J		1030/975	450	CN
15	225/70R15C	8PR	112/110	S		BSW	6 1/2J		1120/1060	450	CN
16	195/60R16C	6PR	99/97	H		BSW	6J		775/730	375	CN
16	215/60R16C	6PR	103/101	T		BSW	6 1/2J		875/825	375	CN
16	195/65R16C	8PR	104/102	T		BSW	6J		900/850	475	CN
16	205/65R16C	8PR	107/105	T		BSW	6J		975/925	475	CN
16	215/65R16C	6PR	106/104	T		BSW	6 1/2J		950/900	375	CN
16	215/65R16C	8PR	109/107	T		BSW	6 1/2J		1030/975	475	CN
16	225/65R16C	8PR	112/110	R		BSW	6 1/2J		1120/1060	475	CN
16	235/65R16C	10PR	121/119	R		BSW	7J		1450/1360	575	CN
16	195/75R16C	8PR	107/105	R		BSW	5 1/2J		975/925	475	CN
16	195/75R16C	10PR	110/108	R		BSW	5 1/2J		1060/1000	525	CN
16	205/75R16C	10PR	113/111	R		BSW	5 1/2J		1150/1090	525	CN
16	215/75R16C	10PR	116/114	R		BSW	6J		1250/1180	525	CN
16	225/75R16C	8PR	118/116	R		BSW	6J		1320/1250	525	CN
16	225/75R16C	10PR	121/120	R		BSW	6J		1450/1400	575	CN
17	215/60R17C	8PR	109/107	T		BSW	6 1/2J		1030/975	475	CN



COMMERCIAL LIGHT TRUCK TIRE

# COMMERCIO VX3

## PERFORMANCE RATINGS:



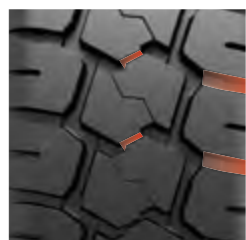
### WET AND DRY PERFORMANCE

Tread groove design effectively disperses water for greater handling and safety on both wet and dry roads.



### IMPROVED DURABILITY

The large block design located in the center portion of the tread and shoulder improve the tire's load bearing capacity and overall durability.



### SUPERIOR TRACTION

The buffer design connecting tread blocks in the center tread and shoulder improve tire rigidity and overall traction.

RIM	SIZE	PR	LI	SS	XL OR NOT	SIDEWALL	STANDARD RINM	UTQG	MAX LOAD (kg)	PRESSURE (kpa)	PLANT
12	155R12C	8PR	88/86	P		BSW	4.50B		560/530	450	CN
12	5.00R12LT	10PR	88/86	P		BSW	3.50B		560/530	560	CN
13	5.50R13LT	14PR	102/100	P		BSW	4.00B		850/800	725	CN
13	145R13C	8PR	88/86	R		BSW	4.00B		560/530	450	CN
13	5.50R13LT	10PR	92/88	P		BSW	4.00B		630/560	560	CN



COMMERCIAL LIGHT TRUCK TIRE

# COMMERCIO VX+



## PERFORMANCE RATINGS:



### SIPE DESIGN

The sipe design is optimized for wet weather driving. Improved handling and traction in wet weather conditions.

### CLOSED SHOULDER DESIGN

Enhancing handling performance and wear performances.



RIM	SIZE	PR	LI	SS	XL OR NOT	SIDEWALL	STANDARD RINM	UTQG	MAX LOAD (kg)	PRESSURE (kpa)	PLANT
12	155R12C	6PR	83/81	P		BSW	4.50B		487/462	350	CN
12	155R12C	8PR	88/86	N		BSW	4.50B		560/530	450	VN
12	155R12C	8PR	88/86	P		BSW	4.50B		560/530	450	CN
13	155R13C	8PR	90/88	N		BSW	4 1/2J		600/560	450	VN
13	165R13C	8PR	94/93	P		BSW	4 1/2J		670/650	450	VN
14	185R14C	8PR	102/100	Q		BSW	5 1/2J		850/800	450	CN/VN
14	195R14C	8PR	106/104	Q		BSW	5 1/2J		950/900	450	CN/VN
15	195/70R15C	8PR	104/102	R		BSW	6J		900/850	450	VN
15	225/70R15C	8PR	112/110	R		BSW	6 1/2J		1120/1060	450	VN
15	225/75R15C	8PR	116/114	Q		BSW	6J		1250/1180	475	VN
15	195R15C	8PR	106/104	S		BSW	5 1/2J		950/900	450	CN/VN
16	205/65R16C	8PR	107/105	T		BSW	6J		975/925	475	VN
16	235/65R16C	10PR	121/119	R		BSW	7J		1450/1360	575	VN
16	195/75R16C	10PR	110/108	Q		BSW	5 1/2J		1060/1000	525	VN
16	215/75R16C	10PR	116/114	R		BSW	6J		1250/1180	525	VN





LIGHT TRUCK TIRE

# EXTMILE SL15

## PERFORMANCE RATINGS:



LIGHT TRUCK TIRE

# EXTMILE SL16

## PERFORMANCE RATINGS:



### EXTENDED LIFE

The shoulder grooves effectively reduce heat buildup to promote even wear.



### DURABILITY

Closed shoulder design improve scrub and tear resistance.



### GRIP PERFORMANCE

Pipe-like grooves optimize ground pressure distribution to improve grip.



### LOAD CAPACITY

Strengthened carcass improves the tire's load bearing capabilities.



### LOAD CAPACITY

New casing design improves strength for greater load bearing capabilities.



### WET PERFORMANCE

The widened grooves effectively drain water and reduce stone retention.

### EXTENDED LIFE

The optimized tread pattern design allows for more even grip and promotes even tread wear.



### STYLISH DESIGN

Three-dimensional design just below the shoulder improves tire aesthetics.

RIM	SIZE	PR	LI	SS	XL OR NOT	SIDEWALL	STANDARD RINM	UTQG	MAX LOAD (kg)	PRESSURE (kpa)	PLANT
16	6.50R16LT	10PR	107/102	Q		BSW	5.50F		975/850	560	CN

RIM	SIZE	PR	LI	SS	XL OR NOT	SIDEWALL	STANDARD RINM	UTQG	MAX LOAD (kg)	PRESSURE (kpa)	PLANT
15	7.00R15LT	12PR	114/109	N		BSW	5.50F		1180/1030	650	CN
15	7.00R15LT	10PR	110/105	N		BSW	5.50F		1060/925	560	CN
16	7.50R16LT	12PR	120/116	N		BSW	6.00G		1400/1250	650	CN
16	7.00R16LT	10PR	111/107	Q		BSW	5.50F		1090/975	560	CN
16	7.00R16LT	12PR	115/111	Q		BSW	5.50F		1215/1090	650	CN
16	7.50R16LT	14PR	122/118	N		BSW	6.00G		1500/1320	770	CN



LIGHT TRUCK TIRE

# ENDURE SL18



## PERFORMANCE RATINGS



As the newest addition to the commercial lineup the **ENDURE SL18** offers exceptional durability for improved mileage and tire life.



### IMPROVED MILEAGE

A complex tread design paired with a wear resistant compound improve tire durability for exceptional mileage.

### CARRYING CAPACITY

The wide tread and firm sidewall design offer improved driving stability and load bearing support.

The wide tread and firm sidewall design offer improved driving stability and load bearing support.

### EXTENDED LIFE

A strengthened tire casing effectively improves the tire's puncture resistance and overall load bearing capabilities, thus improving tire life.



RIM	SIZE	PR	LI	SS	XL OR NOT	SIDEWALL	STANDARD RINM	UTQG	MAX LOAD (kg)	PRESSURE (kpa)	PLANT
17.5	215/70R17.5LT	10PR	118/116	L		BSW	6.00		1320/1250	600	CN
17.5	215/70R17.5LT	10PR	118/116	N		BSW	6J		1320	600	CN



COMMERCIAL LIGHT TRUCK TIRE

# EXTMILE SL87

## PERFORMANCE RATINGS:



LIGHT TRUCK TIRE

# EXTMILE SL87N

## PERFORMANCE RATINGS



### LOAD CAPACITY

Strengthened tire structure and wide running surface improve load bearing capabilities by more than 20%.

### EXTENDED LIFE

Enhanced tread contour and tread sipe design effectively help dissipate heat to improve service life.

### DURABILITY

Tread compound, central ribs and shoulder design work together to improve tire rigidity for overall greater durability.

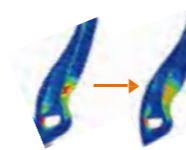
RIM	SIZE	PR	LI	SS	XL OR NOT	SIDEWALL	STANDARD RINM	UTQG	MAX LOAD (kg)	PRESSURE (kpa)	PLANT
13	165R13C	8PR	94/93	S		BSW	4.50B		670/650	450	CN
13	155R13C	8PR	90/88	Q		BSW	4.50B		600/560	450	CN
14	185R14C	8PR	102/100	Q		BSW	5 1/2J		850/800	450	CN
14	165R14C	8PR	96/95	S		BSW	4 1/2J		710/690	450	CN

The **EXTMILE SL87N** is a light truck tire product designed to provide exceptional load bearing capabilities, improved durability, and an extended tire life.



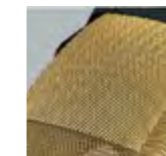
### TIRE DURABILITY

The tread contour and internal structure have been optimized to effectively improve heat dissipation in the shoulder and bead area for overall better durability.



### IMPROVED LOAD BEARING

Bead structure design utilizes an ultra-wear resistance rubber compound that effectively reduces heat buildup. This improvement also thickens the sidewall for improved sidewall strength and overall better load bearing capabilities. The strong steel tread belts improve tread strength to further enhance load bearing capabilities.



### WEAR PERFORMANCE

The wide running surface and deep tread improve wear resistance for an improved usage life. The tread utilizes a new strengthening compound that improves overall tire durability. Groove and tread blocks work together to evenly distribute weight and promote even wear.

RIM	SIZE	PR	LI	SS	XL OR NOT	SIDEWALL	STANDARD RINM	UTQG	MAX LOAD (kg)	PRESSURE (kpa)	PLANT
14	185R14C	8PR	102/100	Q		BSW	5 1/2J		850/800	450	CN
14	185R14C	8PR	102/100	Q		WR	5 1/2J		850/800	450	CN
14	195R14C	8PR	106/104	Q		BSW	5 1/2J		950/900	450	CN
14	195R14C	8PR	106/104	Q		WR	5 1/2J		950/900	450	CN
15	195R15C	8PR	106/104	R		BSW	5 1/2J		950/900	450	CN
15	195R15C	8PR	106/104	R		WR	5 1/2J		950/900	450	CN
15	205/70R15C	8PR	106/104	R		BSW	6J		950/900	450	CN
15	205/70R15C	8PR	106/104	R		WR	6J		950/900	450	CN

# WINTER

---

ENDURE WSL1	104
ICE BLAZER Alpine +	106
ICE BLAZER Alpine EVO1	108
ICE BLAZER Arctic	110
ICE BLAZER Arctic EVO	112
ICE BLAZER Arctic SUV	114
ICE BLAZER WST2 LT	116
ICE BLAZER WST3	118
ICE BLAZER WSTX	122
COMMERCIO ICE	126



STUDLESS WINTER LIGHT TRUCK TIRE

# ENDURE WSL1



## PERFORMANCE RATINGS:



Sailun's answer for commercial light truck vehicles in winter, the **WSL1** is designed with a winter weather compound and a tread pattern that provide optimal grip and stopping power on snow and wet surfaces. WSL1 comes in main commercial sizes ranging from 14in to 16in.



### LOAD CAPACITY

Strengthened tire structure and wide running surface improve load bearing capabilities by more than 20%.

### EXTENDED LIFE

Enhanced tread contour and tread sipe design effectively help dissipate heat to improve service life.

### DURABILITY

Tread compound, central ribs and shoulder design work together to improve tire rigidity for overall greater durability.

RIM	SIZE	PR	LI	SS	XL OR NOT	SIDEWALL	STANDARD RIM	UTQG	MAX LOAD (kg)	PRESSURE (kpa)	PLANT
14	175/65R14C	6PR	90/88	T		BSW	5J		600/560	375	CN
14	185R14C	8PR	102/100	R		BSW	5 1/2J		850/800	450	CN
14	195R14C	8PR	106/104	R		BSW	5 1/2J		950/900	450	CN
15	205/65R15C	6PR	102/100	R		BSW	6J		850/800	375	CN
15	195/70R15C	8PR	104/102	R		BSW	6J		900/850	450	CN
15	205/70R15C	8PR	106/104	R		BSW	6J		950/900	450	CN
15	215/70R15C	8PR	109/107	R		BSW	6 1/2J		1030/975	450	CN
15	225/70R15C	8PR	112/110	R		BSW	6 1/2J		1120/1060	450	CN
16	195/60R16C	6PR	99/97	T		BSW	6J		775/730	375	CN
16	215/60R16C	6PR	103/101	T		BSW	6 1/2J		875/825	375	CN
16	195/65R16C	8PR	104/102	R		BSW	6J		900/850	475	CN
16	205/65R16C	8PR	107/105	T		BSW	6J		975/925	475	CN
16	215/65R16C	8PR	109/107	T		BSW	6 1/2J		1030/975	475	CN
16	225/65R16C	8PR	112/110	R		BSW	6 1/2J		1120/1060	475	CN
16	235/65R16C	10PR	121/119	R		BSW	7J		1450/1360	575	CN
16	185/75R16C	8PR	104/102	R		BSW	5J		900/850	475	CN
16	195/75R16C	8PR	107/105	R		BSW	5 1/2J		975/925	475	CN
16	205/75R16C	10PR	113/111	R		BSW	5 1/2J		1150/1090	525	CN
16	215/75R16C	10PR	116/114	R		BSW	6J		1250/1180	525	CN
16	225/75R16C	10PR	121/120	R		BSW	6J		1450/1400	575	CN

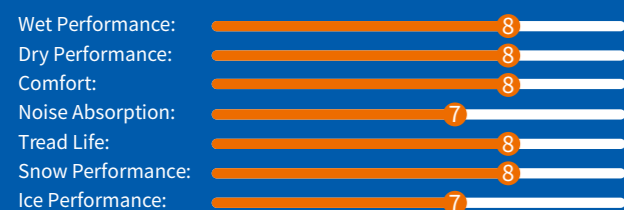


HIGH PERFORMANCE WINTER TIRE

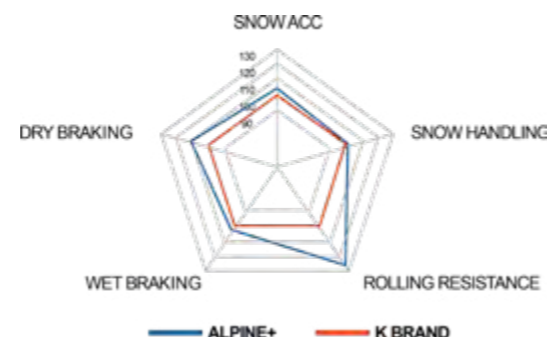
# ICE BLAZER ALPINE+



## PERFORMANCE RATINGS:



The latest generation of HP Alpine winter tyres for cars and family sedans focused on improving safety in wet winter conditions. The **ALPINE+** has a directional pattern that effectively breaks through and disperses snow and water for improved traction and braking performance. ALPINE+ comes in sizes ranging from 13inch to 17inch.



RIM	SIZE	PR	LI	SS	XL OR NOT	SIDEWALL	STANDARD RIMM	UTQG	MAX LOAD (kg)	PRESSURE (kpa)	PLANT
13	155/65R13		73	T		BSW	4.50B		365	300	CN
13	175/65R13		80	T		BSW	5.00B		450	300	CN
13	155/70R13		75	T		BSW	4.50B		387	300	CN
13	165/70R13		79	T		BSW	5.00B		437	300	CN
13	165/70R13		83	T	XL	BSW	5.00B		487	340	CN
13	175/70R13		82	T		BSW	5.00B		475	300	CN
13	155/80R13		79	T		BSW	4.50B		437	300	CN
14	185/55R14		80	T		BSW	6J		450	300	CN
14	165/60R14		79	T	XL	BSW	5J		437	340	CN
14	185/60R14		82	T		BSW	5 1/2J		475	300	CN
14	155/65R14		75	T		BSW	4 1/2J		387	300	CN
14	165/65R14		79	T		BSW	5J		437	300	CN
14	175/65R14		82	T		BSW	5J		475	300	CN
14	185/65R14		86	H		BSW	5 1/2J		530	300	CN
14	195/65R14		89	T		BSW	6J		580	300	CN
14	165/70R14		81	T		BSW	5J		462	300	CN
14	175/70R14		84	T		BSW	5J		500	300	CN
15	195/50R15		82	H		BSW	6J		475	300	CN
15	205/50R15		86	H		BSW	6 1/2J		530	300	CN
15	175/55R15		77	T		BSW	5 1/2J		412	300	CN
15	185/55R15		82	H		BSW	6J		475	300	CN
15	195/55R15		85	H		BSW	6J		515	300	CN
15	195/55R15		89	H	XL	BSW	6J		580	340	CN
15	175/60R15		81	H		BSW	5J		462	300	CN
15	185/60R15		84	T		BSW	5 1/2J		500	300	CN
15	185/60R15		88	T	XL	BSW	5 1/2J		560	340	CN
15	195/60R15		88	H		BSW	6J		560	300	CN
15	205/60R15		91	H		BSW	6J		615	300	CN
15	175/65R15		84	T		BSW	5J		500	300	CN
15	185/65R15		88	H		BSW	5 1/2J		560	300	CN
15	195/65R15		91	T		BSW	6J		615	300	CN
15	195/65R15		95	T	XL	BSW	6J		690	340	CN
15	205/65R15		94	H		BSW	6J		670	300	CN
15	215/65R15		96	H		BSW	6 1/2J		710	300	CN
16	195/45R16		84	H	XL	BSW	6 1/2J		500	340	CN
16	205/45R16		87	H	XL	BSW	7J		545	340	CN
16	185/55R16		87	H	XL	BSW	6J		545	340	CN
16	195/55R16		87	H		BSW	6J		545	300	CN
16	205/55R16		91	H		BSW	6 1/2J		615	300	CN
16	205/55R16		91	T		BSW	6 1/2J		615	300	CN
16	205/55R16		94	H	XL	BSW	6 1/2J		670	340	CN
16	205/60R16		92	H		BSW	6J		630	300	CN
16	205/60R16		96	H	XL	BSW	6J		710	340	CN
16	215/60R16		95	H		BSW	6 1/2J		690	300	CN
16	215/60R16		99	H	XL	BSW	6 1/2J		775	340	CN
16	215/65R16		98	H		BSW	6 1/2J		750	300	CN
17	205/50R17		93	H	XL	BSW	6 1/2J		650	340	CN



### WINTER SAFETY

The spear-shape pattern effectively disperses snow and water quickly to maintain secure contact with the road. The tread pattern is made with a 100% silica compound that maximizes grip, reduces rolling resistance, and tread wear while also maintaining softness in extreme cold temperatures.

### SNOW TRACTION

A variable pitch design and increased number of lateral grooves and sipes provide greater performance on wet and snowy roads.

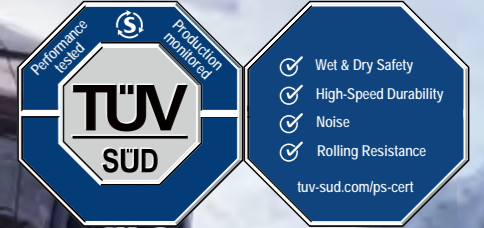
### WINTER COMFORT

The tread is designed with an optimized pitch sequence and profile which reduces wheel vibrations for fewer noise emissions and even tread wear, as well as improving steering response for overall greater driving comfort.

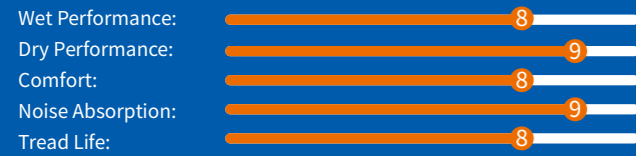


ULTRA HIGH PERFORMANCE WINTER TIRE

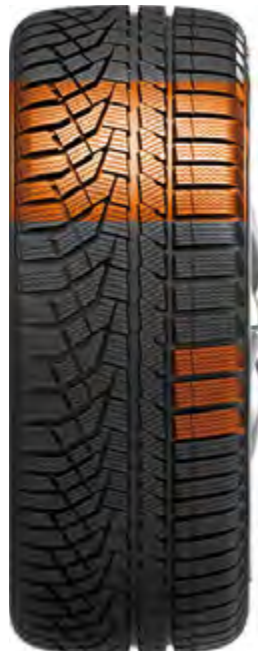
# ICE BLAZER ALPINE EVO1



## PERFORMANCE RATINGS:



This European exclusive UHP winter tire was developed specifically to provide stability and handling in winter weather conditions for European cars and SUVs. The asymmetric, wide-block pattern balances handling and driving comfort, and increases snow traction for more efficient braking. *Alpine Evo 1* utilizes a winter-weather compound which helps maintain tread softness for maximized grip, reduced rolling resistance, and improved driving comfort.



### WINTER PERFORMANCE

The 100% silica compound maximizes grip, offers lower rolling for great fuel economy, reduces wear resistance for longer tyre life, and also maintains softness in a variety of winter weather conditions. The tread pattern utilizes a groove and sipe design that improves traction and braking performance on wet and snowy roads.

### WINTER COMFORT

The wide pattern blocks located on the tyre shoulder improve control on dry and snowy roads. The tread profile is designed for optimal handling and driving comfort while the tread pitch sequence effectively reduces wheel vibration to promote even tread wear and a quiet, comfortable drive.

RIM	SIZE	PR	LI	SS	XL OR NOT	SIDEWALL	STANDARD RINM	UTQG	MAX LOAD (kg)	PRESSURE (kpa)	PLANT
16	215/45R16		90	V	XL	BSW	7J		600	340	CN
16	215/55R16		97	H	XL	BSW	7J		730	340	CN
16	225/55R16		99	V	XL	BSW	7J		775	340	CN
16	215/70R16		100	H		BSW	6 1/2J		800	300	CN
17	215/45R17		91	V	XL	BSW	7J		615	340	CN
17	225/45R17		91	H		BSW	7 1/2J		615	300	CN
17	225/45R17		94	V	XL	BSW	7 1/2J		670	340	CN
17	235/45R17		97	V	XL	BSW	8J		730	340	CN
17	245/45R17		99	V	XL	BSW	8J		775	340	CN
17	215/50R17		95	V	XL	BSW	7J		690	340	CN
17	225/50R17		98	V	XL	BSW	7J		750	340	CN
17	215/55R17		98	V	XL	BSW	7J		750	340	CN
17	225/55R17		101	V	XL	BSW	7J		825	340	CN
17	235/55R17		103	V	XL	BSW	7 1/2J		875	340	CN
17	215/60R17		100	V	XL	BSW	6 1/2J		800	340	CN
17	225/60R17		99	H		BSW	6 1/2J		775	300	CN
17	215/65R17		99	V		BSW	6 1/2J		775	300	CN
17	225/65R17		106	H	XL	BSW	6 1/2J		950	340	CN
17	235/65R17		108	H	XL	BSW	7J		1000	340	CN
17	265/65R17		116	H	XL	BSW	8J		1250	340	CN
18	225/40R18		92	V	XL	BSW	8J		630	340	CN
18	235/40R18		95	V	XL	BSW	8 1/2J		690	340	CN
18	245/40R18		97	V	XL	BSW	8 1/2J		730	340	CN
18	255/40R18		99	V	XL	BSW	9J		775	340	CN
18	225/45R18		95	V	XL	BSW	7 1/2J		690	340	CN
18	235/45R18		98	V	XL	BSW	8J		750	340	CN
18	245/45R18		100	V	XL	BSW	8J		800	340	CN
18	255/45R18		103	V	XL	BSW	8 1/2J		875	340	CN
18	225/50R18		99	V	XL	BSW	7J		775	340	CN
18	235/50R18		101	V	XL	BSW	7 1/2J		825	340	CN
18	215/55R18		99	V	XL	BSW	7J		775	340	CN
18	225/55R18		102	V	XL	BSW	7J		850	340	CN
18	235/55R18		104	H	XL	BSW	7 1/2J		900	340	CN
18	255/55R18		109	V	XL	BSW	8J		1030	340	CN
18	225/60R18		104	V	XL	BSW	6 1/2J		900	340	CN
18	235/60R18		107	V	XL	BSW	7J		975	340	CN
18	265/60R18		114	H	XL	BSW	8J		1180	340	CN
19	235/35R19		91	W	XL	BSW	8 1/2J		615	340	CN
19	255/35R19		96	V	XL	BSW	9J		710	340	CN
19	225/40R19		93	W	XL	BSW	8J		650	340	CN
19	255/40R19		100	V	XL	BSW	9J		800	340	CN
19	275/40R19		105	V	XL	BSW	9 1/2J		925	340	CN
19	245/45R19		102	W	XL	BSW	8J		850	340	CN
19	255/50R19		107	V	XL	BSW	8J		975	340	CN
19	235/55R19		105	V	XL	BSW	7 1/2J		925	340	CN
19	255/55R19		111	V	XL	BSW	8J		1090	340	CN
20	275/35R20		102	W	XL	BSW	9 1/2J		850	340	CN
20	315/35R20		110	V	XL	BSW	11J		1060	340	CN
20	245/40R20		99	W	XL	BSW	8 1/2J		775	340	CN
20	275/40R20		106	V	XL	BSW	9 1/2J		950	340	CN

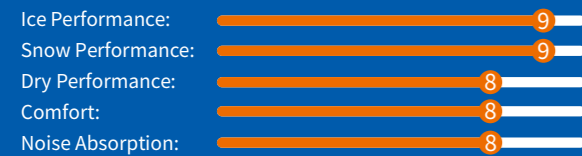


STUDLESS WINTER TIRE

# ICE BLAZER ARCTIC



## PERFORMANCE RATINGS:



This studless performance winter tire is designed with an asymmetric tread pattern which offers greater grip, handling, and braking capabilities for a more focused performance enhancement on ice and snow. The **ICE BLAZER ARCTIC** comes in 28 different common sizes ranging from 14in to 18in.

### INNER TREAD ELEMENTS

The z-shaped inner tread elements help to increase the tire footprint. The high density multi-angle siping improves grip allowing for easier braking on ice and snow.

### OUTER TREAD ELEMENTS

Various criss-crossing grooves and sipes effectively pack and discharge snow. This improves overall grip for efficient braking and handling on ice and snow.

### WINTER COMFORT

The groove pattern effectively reduces tire vibration with its sound absorbing groove design while also efficiently breaking through and discharging ice and snow.

### SIPES DESIGN

The tread blocks are separated into a dense group of sipes which improve tire traction on snow and ice. At the base of the sipes is a specialized design which interlocks the sipes to enhance block stiffness for improved tyre endurance and driving performance on wet and dry roads.

RIM	SIZE	PR	LI	SS	XL OR NOT	SIDEWALL	STANDARD RIM	UTQG	MAX LOAD (kg)	PRESSURE (kpa)	PLANT
14	185/65R14		86	T		BSW	5 1/2J		530	300	CN
14	175/70R14		88	T	XL	BSW	5J		560	340	CN
14	185/70R14		88	H		BSW	5 1/2J		560	300	CN
15	195/55R15		85	H		BSW	6J		515	300	CN
15	185/60R15		88	H	XL	BSW	5 1/2J		560	340	CN
15	195/60R15		88	T		BSW	6J		560	300	CN
15	185/65R15		88	T		BSW	5 1/2J		560	300	CN
15	195/65R15		91	T		BSW	6J		615	300	CN
15	205/65R15		94	H		BSW	6J		670	300	CN
15	205/70R15		96	T		BSW	6J		710	300	CN
16	205/55R16		94	H	XL	BSW	6 1/2J		670	340	CN
16	215/55R16		97	H	XL	BSW	7J		730	340	CN
16	225/55R16		99	H	XL	BSW	7J		775	340	CN
16	205/60R16		96	H	XL	BSW	6J		710	340	CN
16	215/60R16		99	H	XL	BSW	6 1/2J		775	340	CN
17	215/45R17		87	H		BSW	7J		545	300	CN
17	225/45R17		91	H		BSW	7 1/2J		615	300	CN
17	225/45R17		94	H	XL	BSW	7 1/2J		670	340	CN
17	235/45R17		94	H		BSW	8J		670	300	CN
17	205/50R17		89	H		BSW	6 1/2J		580	300	CN
17	215/50R17		91	T		BSW	7J		615	300	CN
17	225/50R17		98	H	XL	BSW	7J		750	340	CN
17	215/55R17		94	H		BSW	7J		670	300	CN
17	215/55R17		98	H	XL	BSW	7J		750	340	CN
17	225/55RF17		101	H	XL	BSW	7J		825	340	CN
17	225/55R17		101	H	XL	BSW	7J		825	340	CN
17	225/55R17		97	H		BSW	7J		730	300	CN
18	225/45R18		95	H	XL	BSW	7 1/2J		690	340	CN
18	235/45R18		98	H	XL	BSW	8J		750	340	CN
18	245/45R18		100	H	XL	BSW	8J		800	340	CN
18	245/45RF18		100	H	XL	BSW	8J		800	340	CN





STUDLESS WINTER TIRE

# ICE BLAZER ARCTIC EVO



## PERFORMANCE RATINGS:



This studless ultra high-performance winter tire is designed with an asymmetric tread pattern which offers greater grip, handling, and braking capabilities for a more focused performance enhancement on ice and snow. The **ICE BLAZER ARCTIC EVO** comes in 24 different sizes ranging from 18in to 21in, including 3 runflat sizes.

### INNER TREAD ELEMENTS

Staggered narrow grooves improve traction for safer driving on ice and snow.

### OUTER TREAD ELEMENTS

Wide shoulder blocks deliver more effective traction for enhanced braking performance when driving on ice and snow.

### INTERLOCKED SIPES

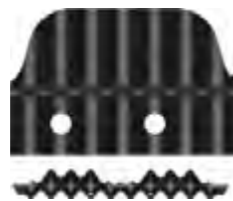
Tread blocks are separated by a dense group of jagged sipes which bite into ice and snow for improved traction. These sipes are also interlocked to enhance block stiffness for greater driving performance in wet and dry conditions.

### INNER SHOULDER GROOVES

Jagged shoulder grooves effectively grip to ice and snow for enhanced traction.

### OUTER SHOULDER DESIGN

The special outside shoulder design improves grip in deep snow for overall safer driving.



RIM	SIZE	PR	LI	SS	XL OR NOT	SIDEWALL	STANDARD RIMM	UTQG	MAX LOAD (kg)	PRESSURE (kpa)	PLANT
18	225/50R18		99	V	XL	BSW	7J		775	340	CN
18	235/50R18		101	H	XL	BSW	7 1/2J		825	340	CN
18	245/50RF18		100	V		BSW	7 1/2J		800	300	CN
18	225/55R18		102	H	XL	BSW	7J		850	340	CN
18	225/60R18		100	T		BSW	6 1/2J		800	300	CN
18	245/60R18		105	H		BSW	7J		925	300	CN
18	265/60R18		110	T		BSW	8J		1060	300	CN
19	235/40R19		96	T	XL	BSW	8 1/2J		710	340	CN
19	275/40RF19		105	V	XL	BSW	9 1/2J		925	340	CN
19	275/40R19		105	V	XL	BSW	9 1/2J		925	340	CN
19	225/45R19		96	V	XL	BSW	7 1/2J		710	340	CN
19	245/45RF19		102	V	XL	BSW	8J		850	340	CN
19	245/45R19		102	V	XL	BSW	8J		850	340	CN
19	255/45R19		104	V	XL	BSW	8 1/2J		900	340	CN
19	235/50R19		103	H	XL	BSW	7 1/2J		875	340	CN
19	255/50R19		107	H	XL	BSW	8J		975	340	CN
19	225/55R19		99	H		BSW	7J		775	300	CN
19	235/55R19		101	H		BSW	7 1/2J		825	300	CN
19	245/55R19		103	H		BSW	7 1/2J		875	300	CN
19	255/55R19		111	H	XL	BSW	8J		1090	340	CN
20	275/40R20		106	V	XL	BSW	9 1/2J		950	340	CN
20	255/45R20		105	T	XL	BSW	8 1/2J		925	340	CN
20	275/45R20		110	T	XL	BSW	9J		1060	340	CN
20	245/50R20		102	H		BSW	7 1/2J		850	300	CN
20	255/50R20		109	H	XL	BSW	8J		1030	340	CN
20	275/50R20		113	V	XL	BSW	8 1/2J		1150	340	CN
20	235/55R20		105	V	XL	BSW	7 1/2J		925	340	CN
20	255/55R20		110	V	XL	BSW	8J		1060	340	CN
21	275/45R21		110	V	XL	BSW	9J		1060	340	CN



STUDLESS WINTER SUV TIRE

# ICE BLAZER ARCTIC SUV



## PERFORMANCE RATINGS:



This studless performance winter tire is focused on providing a more comfortable and efficient drive with a tread pattern and shoulder design that offers consistent grip and increases the tire's contact area for greater control on ice and snow. The **ICE BLAZER ARCTIC SUV** comes in 13 different sizes at 16in, 17in, and 18in.

### WINTER SUV TREAD

The tread block sipes are designed to improve grip on both ice and snow.



### HANDLING AND ENDURANCE

The overall shoulder design increases handling for improved driving comfort and ensures consistent performance throughout the tyre's lifetime. The specialized shoulder block design enlarges the tire contact area and enhances lateral traction.



RIM	SIZE	PR	LI	SS	XL OR NOT	SIDEWALL	STANDARD RINM	UTQG	MAX LOAD (kg)	PRESSURE (kpa)	PLANT
16	215/65R16		102	H	XL	BSW	6 1/2J		850	340	CN
16	215/65R16		98	H		BSW	6 1/2J		750	300	CN
16	235/70R16		106	S		BSW	7J		950	300	CN
16	245/70R16		107	S		BSW	7J		975	300	CN
17	235/55R17		103	H	XL	BSW	7 1/2J		875	340	CN
17	235/55R17		99	H		BSW	7 1/2J		775	300	CN
17	215/60R17		100	T	XL	BSW	6 1/2J		800	340	CN
17	215/60R17		96	T		BSW	6 1/2J		710	300	CN
17	225/60R17		103	T	XL	BSW	6 1/2J		875	340	CN
17	225/60R17		99	T		BSW	6 1/2J		775	300	CN
17	215/65R17		99	T		BSW	6 1/2J		775	300	CN
17	225/65R17		102	S		BSW	6 1/2J		850	300	CN
18	215/55R18		99	H	XL	BSW	7J		775	340	CN
18	235/55R18		104	H	XL	BSW	7 1/2J		900	340	CN
18	255/55R18		109	H	XL	BSW	8J		1030	340	CN
18	235/60R18		107	T	XL	BSW	7J		975	340	CN
18	235/65R18		106	T		BSW	7J		950	300	CN

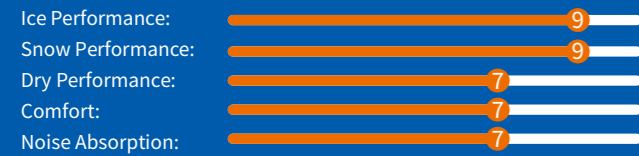


STUDDBLE WINTER TIRE

# ICE BLAZER WST2 LT



## PERFORMANCE RATINGS:



A studdable winter tire designed for light trucks, the **WST2 LT** maintains maximum traction while tackling the toughest on-off road conditions, whether it be snow, ice, or mud.



### WINTER SAFETY

Specially formulate LT tread compound allows the rubber to maintain flexibility for excellent performance in extreme temperatures. Improves safety and handling in extreme weather conditions (designated with the Severe Service Emblem).

### WINTER GRIP

Angled groove design efficiently drains slush and water to maximize grip and handling.

### DRIVING COMFORT

Variable pitch design is optimized to reduce noise emissions for a more quite and comfortable ride.

RIM	SIZE	PR	LI	SS	XL OR NOT	SIDEWALL	STANDARD RIMM	UTQG	MAX LOAD (kg)	PRESSURE (kpa)	PLANT
16	185/75R16C	8PR	104/102	R		BSW	5J		900/850	475	CN
16	LT225/75R16	10PR	115/112	Q		BSW	6J		1215/1120	550	CN
16	LT245/75R16	10PR	120/116	Q		BSW	7J		1380/1260	550	CN
17	245/70R17		110	S		BSW	7J		1060	300	CN
17	LT245/70R17	10PR	119/116	Q		BSW	7J		1360/1250	550	CN
17	265/70R17		115	S		BSW	8J		1215	300	CN
17	LT265/70R17	10PR	121/118	Q		BSW	8J		1450/1320	550	CN
17	LT245/75R17	10PR	121/118	R		BSW	7J		1450/1320	550	CN
18	235/60R18		107	T	XL	BSW	7J		975	340	CN
18	245/60R18		105	T		BSW	7J		925	300	CN
18	265/60R18		110	T		BSW	8J		1060	300	CN
18	235/65R18		106	T		BSW	7J		950	300	CN
18	265/65R18		114	T		BSW	8J		1180	300	CN
18	275/65R18		116	S		BSW	8J		1250	300	CN
18	LT275/65R18	10PR	123/120	R		BSW	8J		1550/1400	550	CN
18	255/70R18		113	S		BSW	7 1/2J		1150	300	CN
18	LT265/70R18	10PR	124/121	R		BSW	8J		1600/1450	550	CN
18	LT275/70R18	10PR	125/122	R		BSW	8J		1650/1500	550	CN
20	245/50R20		102	T		BSW	7 1/2J		850	300	CN
20	275/55R20		117	S	XL	BSW	8 1/2J		1285	340	CN
20	275/60R20		119	S	XL	BSW	8J		1360	340	CN



STUDDBLE WINTER TIRE

# ICE BLAZER WST3



## PERFORMANCE RATINGS:



Introducing the next generation to the acclaimed WST1, the **ICE BLAZER WST3**, a studdable winter tyre which brings improved traction on snow and ice thanks to a larger number of studs and the improved pattern design. The WST3 employs a variation of the Sailun Nordic compound which allows the tyre to maintain hardness and flexibility in extremely cold weather conditions offering improved grip.



### WINTER TRACTION

The unidirectional tread pattern is designed with more lateral and transverse grooves compared to WST1. This improves the evacuation of snow, slush and water for improved traction and braking performance.

### ICE GRIP

The WST3 stud pattern is meticulously arranged in a variable sequence to improve the number of studs. This improvement along with new stud holding and padding designs ensure maximum grip on ice.

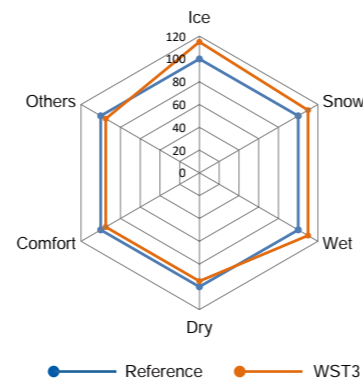
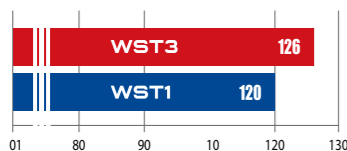
### WINTER HANDLING

Multi-layer sipes and saw-tooth blocks improve steering and stability on snow and ice.

**ICE BLAZER WST3** Formula Intro

### Increased Snow Traction Index in Pattern Design

Snow Traction Index %



RIM	SIZE	PR	LI	SS	XL OR NOT	SIDEWALL	STANDARD RIMM	UTQG	MAX LOAD (kg)	PRESSURE (kpa)	PLANT
13	155/70R13		75	T		BSW	4.50B		387	300	CN
13	165/70R13		79	T		BSW	5.00B		437	300	CN
13	175/70R13		82	T		BSW	5.00B		475	300	CN
13	155/80R13		79	T		BSW	4.50B		437	300	CN
13	165/80R13		83	T		BSW	4.50B		487	300	CN
14	185/60R14		82	T		BSW	5 1/2J		475	300	CN
14	155/65R14		75	T		BSW	4.50B,4 1/2J		387	300	CN
14	165/65R14		79	T		BSW	5.00B/5J		437	300	CN
14	175/65R14		86	T	XL	BSW	5J		530	340	CN
14	185/65R14		90	T	XL	BSW	5 1/2J		600	340	CN
14	175/70R14		84	T		BSW	5.00B/5J		500	300	CN
14	185/70R14		92	T	XL	BSW	5 1/2J		630	340	CN
14	185/80R14		91	Q		BSW	5J		615	300	CN
15	185/55R15		86	T	XL	BSW	6J		530	340	CN
15	185/60R15		88	T	XL	BSW	5 1/2J		560	340	CN
15	195/60R15		88	T		BSW	6J		560	300	CN
15	175/65R15		84	T		BSW	5J		500	300	CN
15	185/65R15		92	T	XL	BSW	5 1/2J		630	340	CN
15	195/65R15		95	T	XL	BSW	6J		690	340	CN
15	205/65R15		94	T		BSW	6J		670	300	CN
15	215/65R15		96	T		BSW	6 1/2J		710	300	CN
15	205/70R15		100	T	XL	BSW	6J		800	340	CN
15	215/70R15		98	T		BSW	6 1/2J		750	300	CN
15	235/75R15		105	S		BSW	6 1/2J		925	300	CN
16	205/50R16		87	T		BSW	6 1/2J		545	300	CN
16	205/55R16		94	T	XL	BSW	6 1/2J		670	340	CN
16	215/55R16		97	T	XL	BSW	7J		730	340	CN
16	225/55R16		99	T	XL	BSW	7J		775	340	CN
16	205/60R16		96	T	XL	BSW	6J		710	340	CN



STUDDLE WINTER TIRE

# ICE BLAZER WST3



## PERFORMANCE RATINGS:



RIM	SIZE	PR	LI	SS	XL OR NOT	SIDEWALL	STANDARD RIMM	UTQG	MAX LOAD (kg)	PRESSURE (kpa)	PLANT
16	215/60R16		99	T	XL	BSW	6 1/2J		775	340	CN
16	225/60R16		98	T		BSW	6 1/2J		750	300	CN
16	235/60R16		100	S		BSW	7J		800	300	CN
16	205/65R16		95	T		BSW	6J		690	300	CN
16	215/65R16		102	T	XL	BSW	6 1/2J		850	340	CN
16	215/70R16		100	T		BSW	6 1/2J		800	300	CN
16	225/70R16		103	T		BSW	6 1/2J		875	300	CN
16	235/70R16		106	T		BSW	7J		950	300	CN
16	245/70R16		107	T		BSW	7J		975	300	CN
16	255/70R16		111	T		BSW	7 1/2J		1090	300	CN
16	265/70R16		112	T		BSW	8J		1120	300	CN
16	275/70R16		114	T		BSW	8J		1180	300	CN
16	235/75R16		108	T		BSW	6 1/2J		1000	300	CN
16	245/75R16		111	S		BSW	7J		1090	300	CN
17	215/45R17		91	T	XL	BSW	7J		615	340	CN
17	225/45R17		94	T	XL	BSW	7 1/2J		670	340	CN
17	235/45R17		97	T	XL	BSW	8J		730	340	CN
17	215/50R17		95	T	XL	BSW	7J		690	340	CN
17	225/50R17		98	T	XL	BSW	7J		750	340	CN
17	215/55R17		98	T	XL	BSW	7J		750	340	CN
17	225/55R17		101	T	XL	BSW	7J		825	340	CN
17	235/55R17		103	T	XL	BSW	7 1/2J		875	340	CN
17	215/60R17		100	T	XL	BSW	6 1/2J		800	340	CN
17	225/60R17		103	T	XL	BSW	6 1/2J		875	340	CN
17	235/60R17		102	T		BSW	7J		850	300	CN
17	215/65R17		99	T		BSW	6 1/2J		775	300	CN
17	225/65R17		102	T		BSW	6 1/2J		850	300	CN
17	235/65R17		104	T		BSW	7J		900	300	CN
17	245/65R17		107	T		BSW	7J		975	300	CN

RIM	SIZE	PR	LI	SS	XL OR NOT	SIDEWALL	STANDARD RIMM	UTQG	MAX LOAD (kg)	PRESSURE (kpa)	PLANT
17	255/65R17		114	T	XL	BSW	7 1/2J		1180	340	CN
17	265/65R17		112	T		BSW	8J		1120	300	CN
17	245/70R17		110	S		BSW	7J		1060	300	CN
17	265/70R17		115	S		BSW	8J		1215	300	CN
18	225/40R18		92	H	XL	BSW	8J		630	340	CN
18	245/40R18		97	T	XL	BSW	8 1/2J		730	340	CN
18	225/45R18		95	T	XL	BSW	7 1/2J		690	340	CN
18	245/45R18		100	T	XL	BSW	8J		800	340	CN
18	235/50R18		101	T	XL	BSW	7 1/2J		825	340	CN
18	215/55R18		95	T		BSW	7J		690	300	CN
18	225/55R18		102	T	XL	BSW	7J		850	340	CN
18	235/55R18		100	T		BSW	7 1/2J		800	300	CN
18	255/55R18		105	T		BSW	8J		925	300	CN
18	225/60R18		104	T	XL	BSW	6 1/2J		900	340	CN
18	235/60R18		103	T		BSW	7J		875	300	CN
18	275/65R18		116	T		BSW	8J		1250	300	CN
19	235/35R19		91	T	XL	BSW	8 1/2J		615	340	CN
19	255/45R19		104	T	XL	BSW	8 1/2J		900	340	CN
19	255/50R19		107	T	XL	BSW	8J		975	340	CN
19	265/50R19		110	T	XL	BSW	8 1/2J		1060	340	CN
19	235/55R19		101	T		BSW	7 1/2J		825	300	CN
20	255/35R20		97	T	XL	BSW	9J		730	340	CN
20	315/35R20		110	T	XL	BSW	11J		1060	340	CN
20	275/40R20		106	T	XL	BSW	9 1/2J		950	340	CN
20	275/55R20		117	T	XL	BSW	8 1/2J		1285	340	CN
20	275/60R20		115	T		BSW	8J		1215	300	CN



STUDDBLE WINTER TIRE

# ICE BLAZER WSTX



## PERFORMANCE RATINGS:

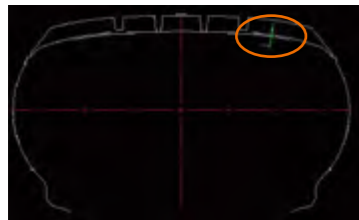


The all-new **WSTX** is the latest addition to Sailun's Ice Blazer family line. A studdable winter tire that is designed for drivers that demand ultimate traction in all winter weather conditions. The modern WSTX design is engineered to give you maximum performance in slush, snow and icy conditions. Designated with the 3PMSF Severe Service Emblem.



### WINTER PERFORMANCE

The tread design is optimized to provide grip in all winter weather situations. Tooth-like grooves and sipes allow for grip on even the slickest of surfaces, thus improving acceleration and braking on wintry roads.

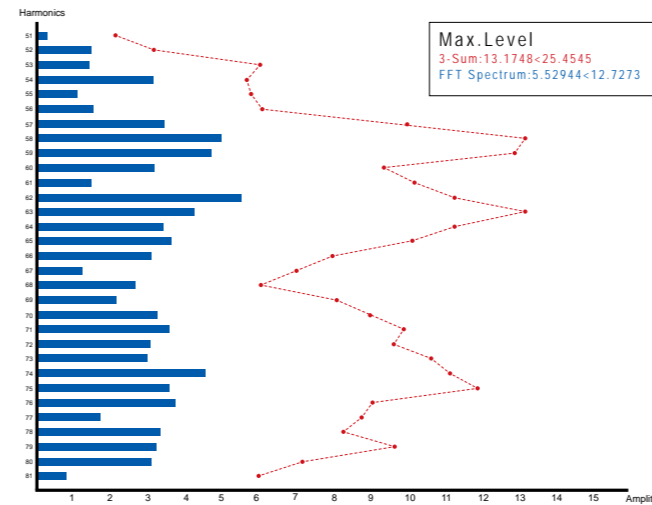


### WINTER HANDLING

New tread contour design enhanced specifically for winter applications which allows for better handling and braking on snow and ice. The raised shoulder also increases the tire footprint which helps to promote even wear, increase turning responsiveness and improve handling performance.

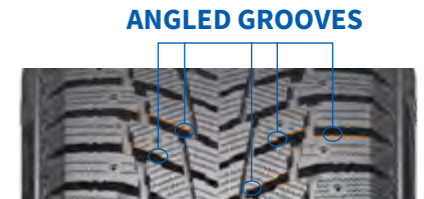
### WINTER SAFETY

The V Shaped pattern effectively breaks through and expels snow and water for improved safety when driving in winter weather conditions.

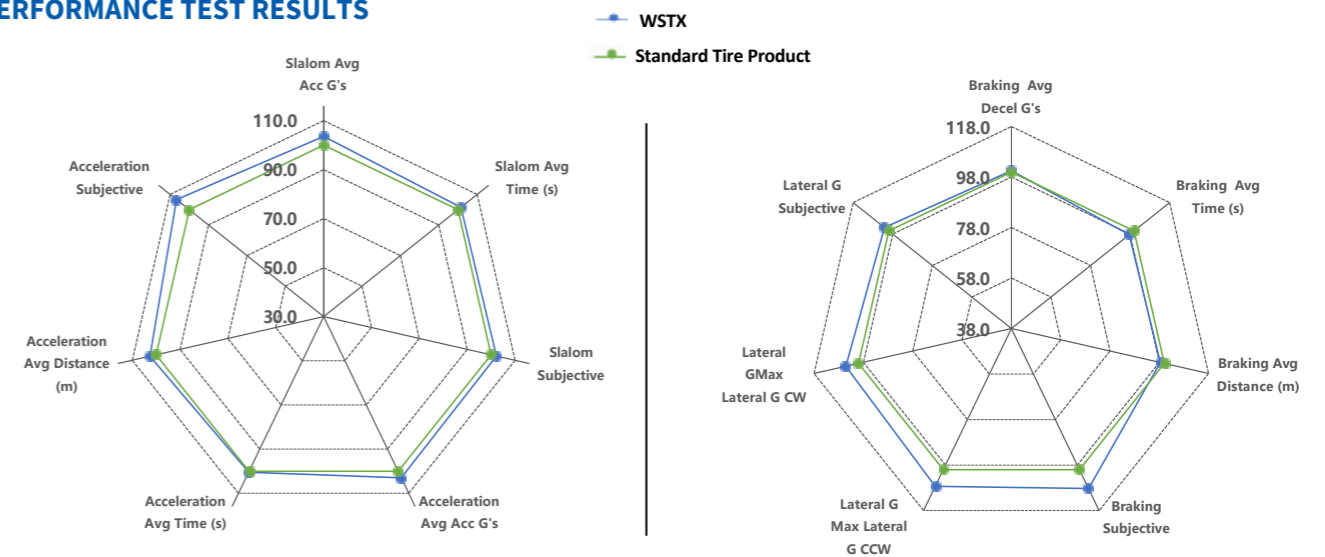


## SAFETY AND COMFORT

Through fine-element analysis the tread pitch has been optimized and equipped with various tread block sipes to reduce tire noise emissions for improved driving performance. Tread grooves are equipped with a slanted edge design which increases the tire's footprint and reduces stone retention for better safety.



## PERFORMANCE TEST RESULTS





STUDDLE WINTER TIRE

# ICE BLAZER WSTX



## PERFORMANCE RATINGS:



RIM	SIZE	PR	LI	SS	XL OR NOT	SIDEWALL	STANDARD RINM	UTQG	MAX LOAD (kg)	PRESSURE (kpa)	PLANT
14	175/65R14		82	T		BSW	5J		475	300	CN
14	185/65R14		86	T		BSW	5 1/2J		530	300	CN
14	175/70R14		84	T		BSW	5J		500	300	CN
15	185/55R15		82	T		BSW	6J		475	300	CN
15	185/60R15		84	T		BSW	5 1/2J		500	300	CN
15	195/60R15		88	T		BSW	6J		560	300	CN
15	175/65R15		84	T		BSW	5J		500	300	CN
15	185/65R15		88	T		BSW	5 1/2J		560	300	CN
15	195/65R15		91	T		BSW	6J		615	300	CN
15	205/65R15		94	T		BSW	6J		670	300	CN
16	195/50R16		84	H		BSW	6J		500	300	CN
16	205/50R16		87	T		BSW	6 1/2J		545	300	CN
16	205/55R16		91	T		BSW	6 1/2J		615	300	CN
16	215/55R16		97	H	XL	BSW	7J		730	340	CN
16	205/60R16		92	T		BSW	6J		630	300	CN
16	215/60R16		95	T		BSW	6 1/2J		690	300	CN
16	225/60R16		98	T		BSW	6 1/2J		750	300	CN
16	235/60R16		100	T		BSW	7J		800	300	CN
16	205/65R16		95	T		BSW	6J		690	300	CN
16	215/65R16		98	T		BSW	6 1/2J		750	300	CN
16	225/65R16		100	T		BSW	6 1/2J		800	300	CN
16	235/65R16		103	T		BSW	7J		875	300	CN
16	215/70R16		100	S		BSW	6 1/2J		800	300	CN
16	225/70R16		103	S		BSW	6 1/2J		875	300	CN

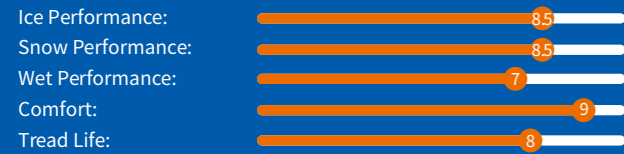
RIM	SIZE	PR	LI	SS	XL OR NOT	SIDEWALL	STANDARD RINM	UTQG	MAX LOAD (kg)	PRESSURE (kpa)	PLANT
17	215/45R17		91	T	XL	BSW	7J		615	340	CN
17	225/45R17		94	H	XL	BSW	7 1/2J		670	340	CN
17	235/45R17		97	T	XL	BSW	8J		730	340	CN
17	205/50R17		93	H	XL	BSW	6 1/2J		650	340	CN
17	215/50R17		95	T	XL	BSW	7J		690	340	CN
17	225/50R17		98	H	XL	BSW	7J		750	340	CN
17	215/55R17		94	T		BSW	7J		670	300	CN
17	225/55R17		97	T		BSW	7J		730	300	CN
17	235/55R17		99	H		BSW	7 1/2J		775	300	CN
17	215/60R17		96	T		BSW	6 1/2J		710	300	CN
17	225/60R17		99	T		BSW	6 1/2J		775	300	CN
17	235/60R17		102	T		BSW	7J		850	300	CN
17	215/65R17		99	T		BSW	6 1/2J		775	300	CN
17	225/65R17		102	S		BSW	6 1/2J		850	300	CN
17	235/65R17		104	S		BSW	7J		900	300	CN
18	225/40R18		92	H	XL	BSW	8J		630	340	CN
18	215/45R18		93	H	XL	BSW	7J		650	340	CN
18	225/45R18		95	T	XL	BSW	7 1/2J		690	340	CN
18	235/45R18		94	H		BSW	8J		670	300	CN
18	245/45R18		100	H	XL	BSW	8J		800	340	CN
18	225/50R18		95	H		BSW	7J		690	300	CN
18	235/50R18		101	T	XL	BSW	7 1/2J		825	340	CN
18	215/55R18		95	T		BSW	7J		690	300	CN
18	225/55R18		98	T		BSW	7J		750	300	CN
18	235/55R18		100	T		BSW	7 1/2J		800	300	CN
18	255/55R18		105	H		BSW	8J		925	300	CN
18	225/60R18		100	T		BSW	6 1/2J		800	300	CN
18	255/65R18		111	S		BSW	7 1/2J		1090	300	CN
19	235/45R19		95	H		BSW	8J		690	300	CN
19	255/50R19		107	H	XL	BSW	8J		975	340	CN
19	225/55R19		99	H		BSW	7J		775	300	CN
19	235/55R19		101	H		BSW	7 1/2J		825	300	CN
19	245/55R19		103	H		BSW	7 1/2J		875	300	CN
19	255/60R19		109	T		BSW	7 1/2J		1030	300	CN
20	255/45R20		101	V		BSW	8 1/2J		825	300	CN
20	255/50R20		105	V		BSW	8J		925	300	CN
20	235/55R20		102	H		BSW	7 1/2J		850	300	CN
20	255/55R20		107	H		BSW	8J		975	300	CN



# COMMERCIO ICE



## PERFORMANCE RATINGS



Specially designed winter tyre for vans, the **COMMERCIO ICE** is Sailun's next generation of the SW15 that improves upon load bearing capabilities, comprehensive winter performance, and offers a more modern design.

### COMMERCIAL PERFORMANCE

Tread grooves are designed with interconnected ribs to improve overall load bearing capabilities and tread block hardness.

### WINTER PERFORMANCE

A new tread rubber compound improves wet grip and braking while also offering exceptional traction in low winter temperatures. Directional tread pattern improves water and snow drainage for better handling in wet conditions.

### WINTER SAFETY

Tread sipes offer exceptional grip, a noticeable improvement in winter handling, and a shortened braking distance for better safety in winter weather applications. The thick, all-encompassing sidewall design effectively protects the carcass by improving impact and tear resistance.

### EXTREME WINTER PERFORMANCE

Studs are optimally arranged for exceptional handling and braking performance in winter weather applications. They are also made of a more sturdy metal to reduce wear and the chances of dislodging. The design around the studs not only improves tyre aesthetics, but also absorbs small bits of sand and ice to reduce the chances of studs dislodging.



### TIRE SIDEWALL PROTECTION

The thick, all-encompassing design on the sidewall effectively protects the carcass by improving impact and tear resistance.

RIM	SIZE	PR	LI	SS	XL OR NOT	SIDEWALL	STANDARD RIMM	UTQG	MAX LOAD (kg)	PRESSURE (kpa)	PLANT
14	185R14C	8PR	102/100	Q		BSW	5 1/2J		850	450	CN
14	185R14C		102/100	Q		BSW	5 1/2J		850	0	CN
15	195/70R15C	8PR	104/102	R		BSW	6J		900	450	CN
15	205/70R15C	8PR	106/104	R		BSW	6J		950	450	CN
15	215/70R15C	8PR	109/107	R		BSW	6 1/2J		1030	450	CN
15	225/70R15C	8PR	112/110	R		BSW	6 1/2J		1120	450	CN
16	195/60R16C	6PR	99/97	S		BSW	6J		775	375	CN
16	195/65R16C	8PR	104/102	R		BSW	6J		900	475	CN
16	205/65R16C	8PR	107/105	R		BSW	6J		975	475	CN
16	215/65R16C	8PR	109/107	R		BSW	6 1/2J		1030	475	CN
16	225/65R16C	8PR	112/110	R		BSW	6 1/2J		1120	475	CN
16	235/65R16C	10PR	121/119	R		BSW	7J		1450/1360	575	CN
16	185/75R16C	8PR	104/102	R		BSW	5J		900	475	CN
16	195/75R16C	8PR	107/105	R		BSW	5 1/2J		975	475	CN
16	205/75R16C	8PR	110/108	R		BSW	5 1/2J		1060	475	CN
16	215/75R16C	10PR	116/114	R		BSW	6J		1250	525	CN
17	215/60R17C	8PR	109/107	T		BSW	6 1/2J		1030	475	CN



# PG TIRES



## Important Tips for Optimal Tire Performance :

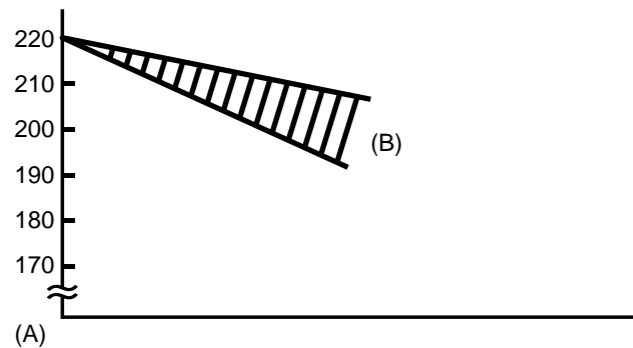
- 1 Maintain optimum air pressure
- 2 Inspect tread grooves to ensure tires are safe and legal
- 3 Visually check for tire damage

Ensure you check your tires once a month and before long trips to maintain performance and ensure safety.

## Why is it important I have the correct tire pressure?

A tire at optimum air pressure should will ensure more safety, provide greater driving performance, improve tire life and reduce fuel consumption.

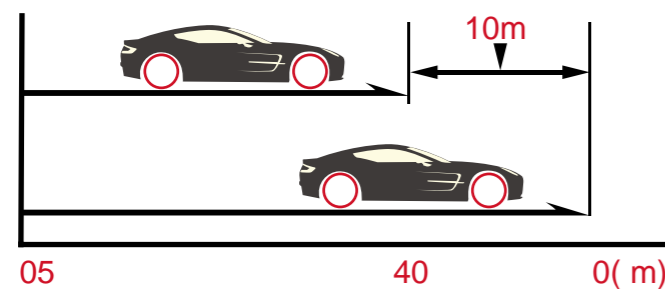
Tire air pressure decreases naturally (little by little). It is generally accepted that air pressure in tires on a passenger car decreases by 5–10% (10–20kPa) every month.



Tire size: 195/65R 15  
 Starting pressure: 220kPa (100kPa=1.0kgf/cm<sup>2</sup>)  
 (A) Air pressure (kPa)  
 (B) Decreases by 10-20kPa a month

## Dangers of Using Worn Tire

Worn tires need a longer stopping distance on wet roads.

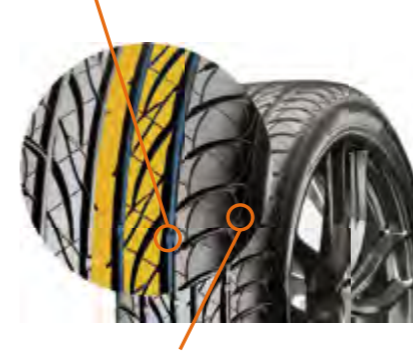


At the same speed (80km/h) and from the same braking point, there is a difference of 10 meters!  
 (A) New tire  
 (B) Worn tire (worn out to 1.6mm)

## Why is it Important I Check for Tire Wear?

The deeper the groove, which is on the surface of the tire, the more grip a tire will have. As your tread pattern wears over time, the grip will begin to decrease. Never use a tire where even just one tread wear indicator is exposed.

TWI:Tread Wear Indicator(1.6mm )



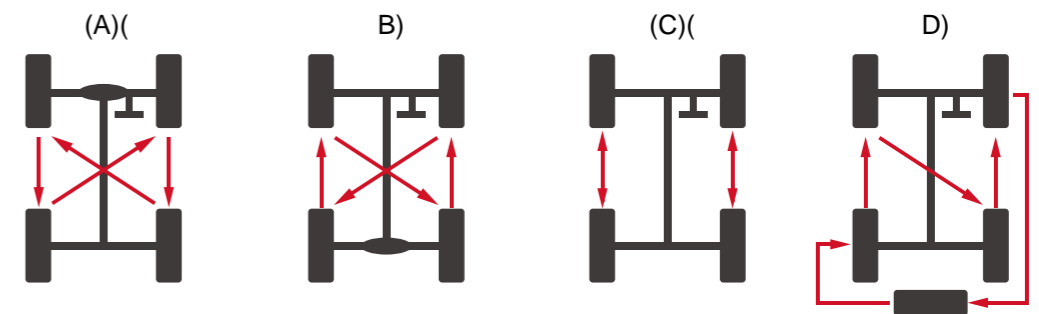
Indicator Ma rk:Triangle Symbol "△"

<Tire Tread Wear Indicator >

## What are the advantages of tire rotation?

- 1 Help Prevent Uneven Tread Wear
- 2 Extension of Tire Service Life (money in your wallet)
- 3 Averaging of Tire Fatigue

Note: The front-wheel tires of an FF vehicle wear two or three times faster than the rear-wheel tires because the front-wheel tires function for both driving and steering.



## Examples of Tire Rotation

(A) FF Vehicle (B) FR Vehicle (C) Tires with Directional Patterns (D) Spare Tire Included

---

**NOTES**

---

---

---

---

---

---

---

---

---

---

---

---

---

---

---

---

---

---

---

---

---

---

---

---

---

---

---

**NOTES**

---

---

---

---

---

---

---

---

---

---

---

---

---

---

---

---

---

---

---

---

---

---

---

---

---

---



**REV 23.01**

Sailun Headquarters  
No. 43 Zhengzhou Road, Qingdao, China