

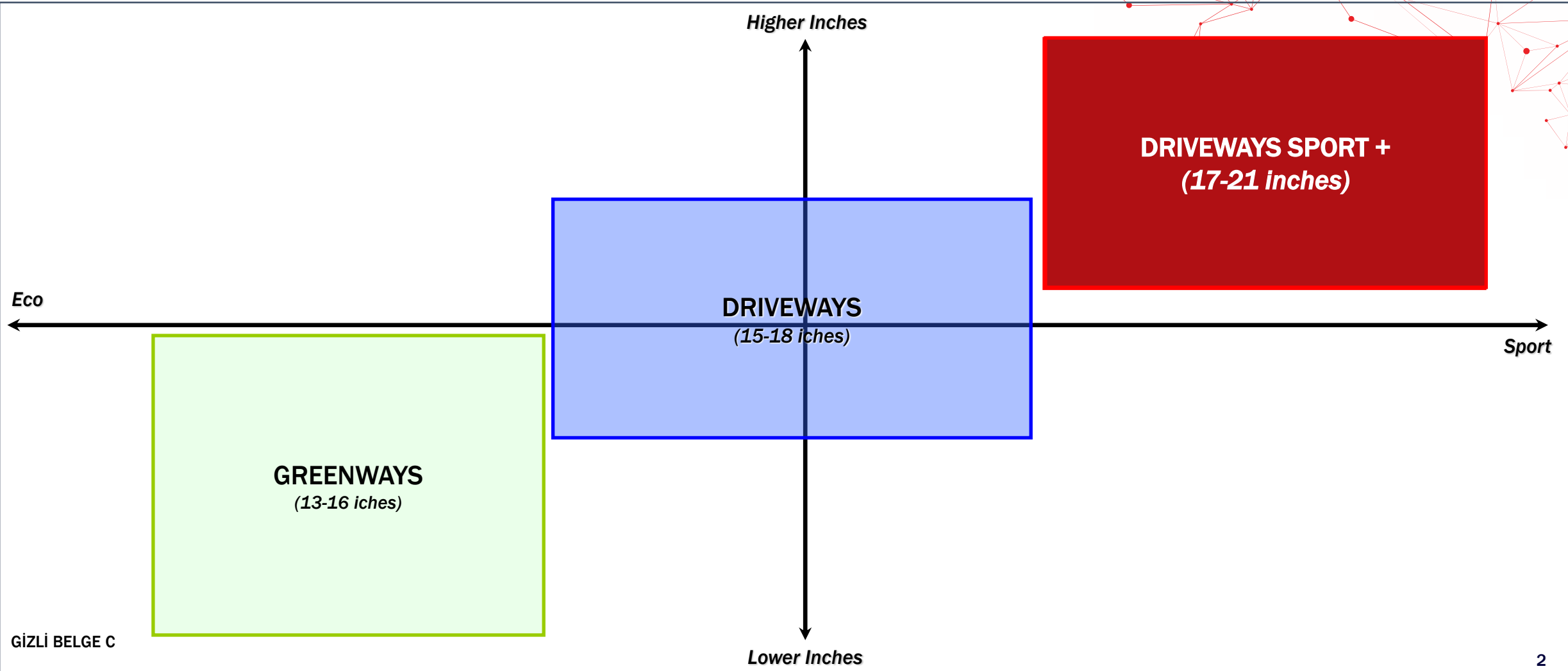


LASSA DRIVEWAYS SPORT +



Product Concept & Positioning

Compact, medium and luxury sports and high-performance vehicle users who prefer enjoying sporty driving sensations.



Lineup

Inch	Size
17	235/45R17 97Y XL
★ 17	205/45R17 88W XL
17	245/45R17 99Y XL
★ 17	225/45R17 94Y XL
17	215/45R17 94Y XL
17	245/40R17 95Y XL
18	255/35R18 94Y XL
★ 18	245/40R18 97Y XL
18	255/45R18 103Y XL
★ 18	225/40R18 92Y XL
★ 18	235/45R18 98Y XL
18	235/40R18 95Y XL
★ 18	225/45R18 95Y XL
18	245/50R18 100Y XL
★ 19	255/35R19 96Y XL
★ 19	255/40R19 100Y XL
19	225/35R19 88Y XL
★ 19	235/35R19 91Y XL
★ 19	245/40R19 98Y XL

RENAULT[CLIO], MINI

ALFA ROMEO[GIULIETTA], BMW[1/2 SERİSİ], FIAT[AEGEA], HYUNDAI [ELANTRA, KIA[CEED], OPEL[ASTRA], PEUGEOT[308], SEAT[LEON], TOYOTA[COROLLA], VOLKSWAGEN[GOLF], MERCEDES [CLA CLASS B CLASS]

AUDI[A5], MERCEDES C SERİSİ

SKODA[OCTAVIA-SUPERB], SUBARU[IMPREZA], FORD[FOCUS, MONDEO], HONDA[CIVIC], OPEL[ASTRA], VOLKSWAGEN[GOLF-JETTA], FIAT[EGEA], MERCEDES[A-C-B SERİSİ], VOLVO[V40], RENAULT[MEGANE], SEAT[ALTEA-LEON], HYUNDAI[I30], BMW[1-2-3 SERİSİ]

PORSCHE[CAYMAN], KIA[SOU], PEUGEOT[3008], SKODA[SUPERB], VOLKSWAGEN[PASSAT-BEETLE], AUDI[A6], CITROEN[DS5]

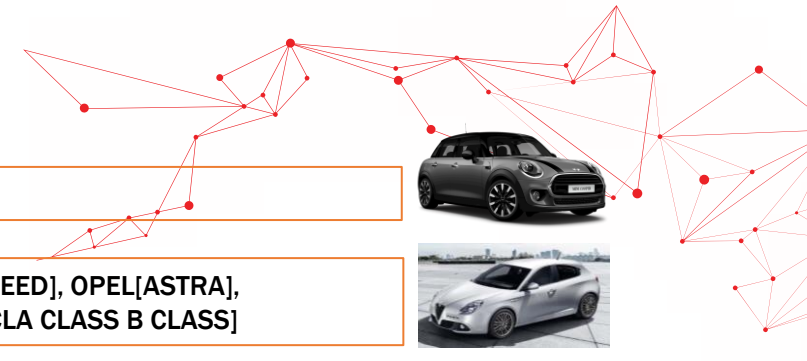
FIAT[500X], NISSAN[JUKE], SUBARU[LEVORG], KIA[NIRO], MINI[COUNTRYMAN], HONDA[HR-V], SKODA[OCTAVIA], VOLKSWAGEN[GOLF], VOLVO[V40 CROSS COUNTRY], BMW[SERIES 3-SERIES 4-X1], MERCEDES [E-A -C SERİSİ-CLA], ALFA ROMEO[GIULIA]

FORD[MUSTANG], VOLVO[V90], AUDI [RS6-A8-S7-A7], MERCEDES[S-SERİSİ], BMW [6 SERİSİ], JAGUAR[XJ] , INFINITI[Q60], VOLKSWAGEN [TIGUAN]

PEUGEOT[308]-SEAT[LEON]

AUDI [A3,R8], BMW M2, VOLVO[V40]

JAGUAR[F-TYPE-XJ], VOLKSWAGEN[ARTEON], MERCEDES-BENZ[E Coupé], AUDI[A4-A6], RENAULT[TALISMAN], SEAT[ATECA]

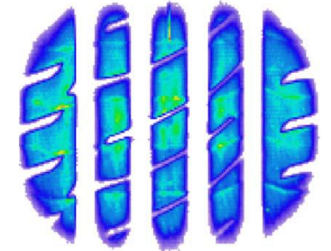


● GİZLİ BELGE C

Technical Features

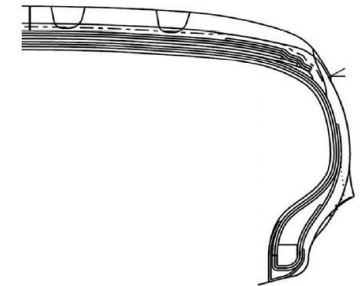
PATTERN DESIGN

- ✓ 4 circumferential grooves to reduce aquaplaning risk
- ✓ Wedge-shaped lateral grooves offer ultimate wet grip
- ✓ Continuous shoulder block design offers shorter brake distance and better handling
- ✓ Improved wet and dry performance & Shorter wet and dry brake distance



CONSTRUCTION

- ✓ New carcass design for better sporty usage
- ✓ High performance by renewed steel belt package
- ✓ Have lighter weight construction, New technologies help improvement in rubber volume without compromising from durability



NEW COMPOUND TECHNOLOGIES

- ✓ New technology compound usage
- ✓ Wet oriented performance
- ✓ Optimized rolling resistance.



Labels

LASSA
DRIVEWAYS SPORT

225/40R18 92Y XL



ENERGY 

LASSA 21953100

225/40R18 92Y XL C1

A	A
B	B
C	C
D	D
E	E

B

72 dB

ABC

LASSA
DRIVEWAYS SPORT

245/40R18 97Y XL



ENERGY 

LASSA 21951600

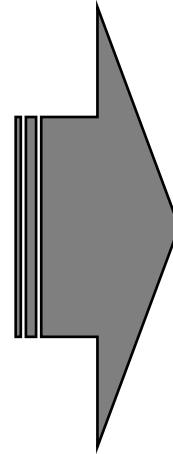
245/40R18 97Y XL C1

A	A
B	B
C	C
D	D
E	E

B

72 dB

ABC



LASSA
DRIVEWAYS SPORT +

225/40R18 92Y XL



ENERGY 

LASSA 21978300

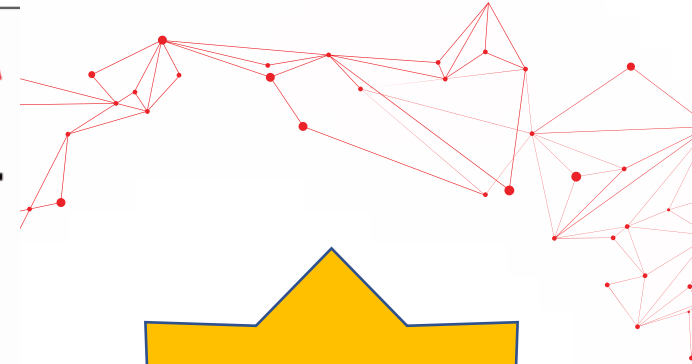
225/40R18 92Y XL C1

A	A
B	B
C	C
D	D
E	E

A

71 dB

ABC

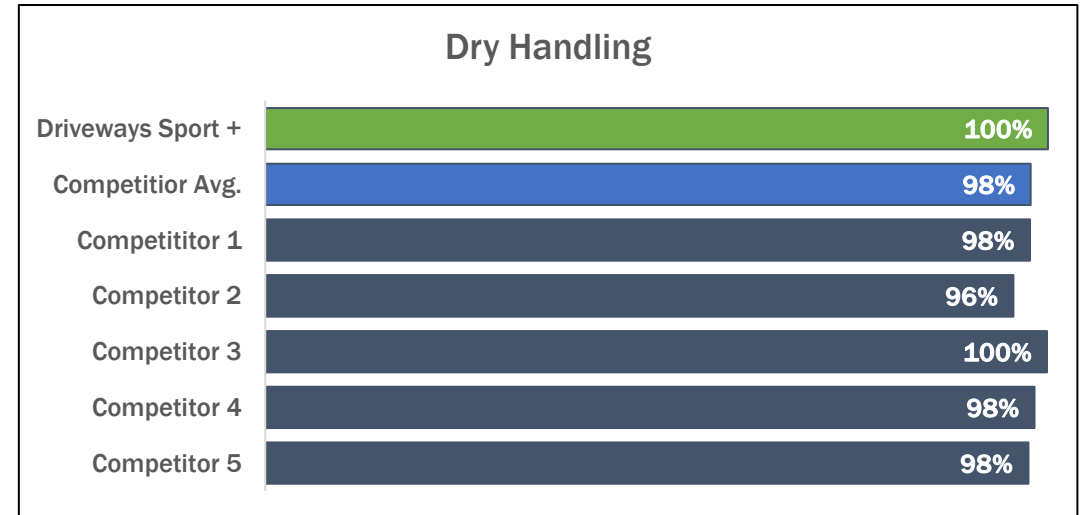
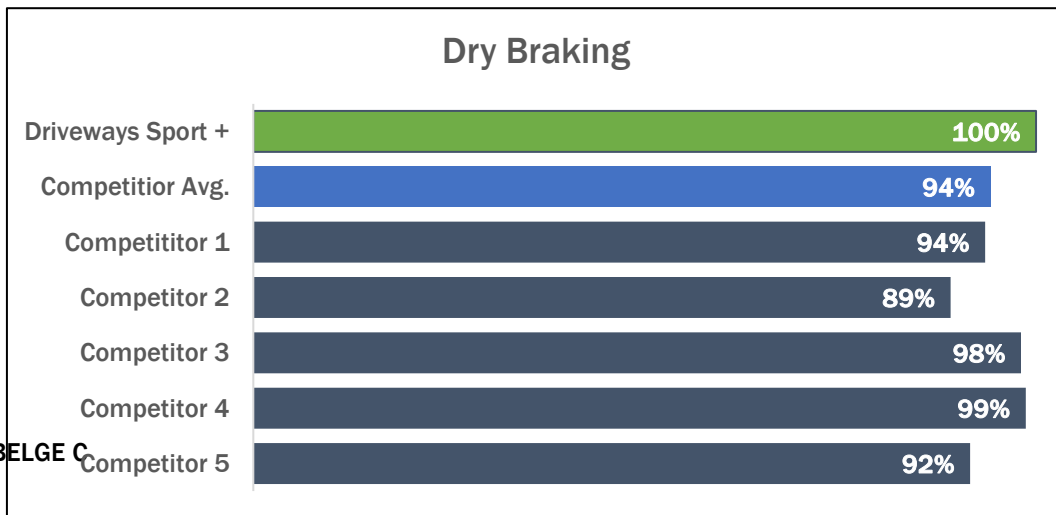
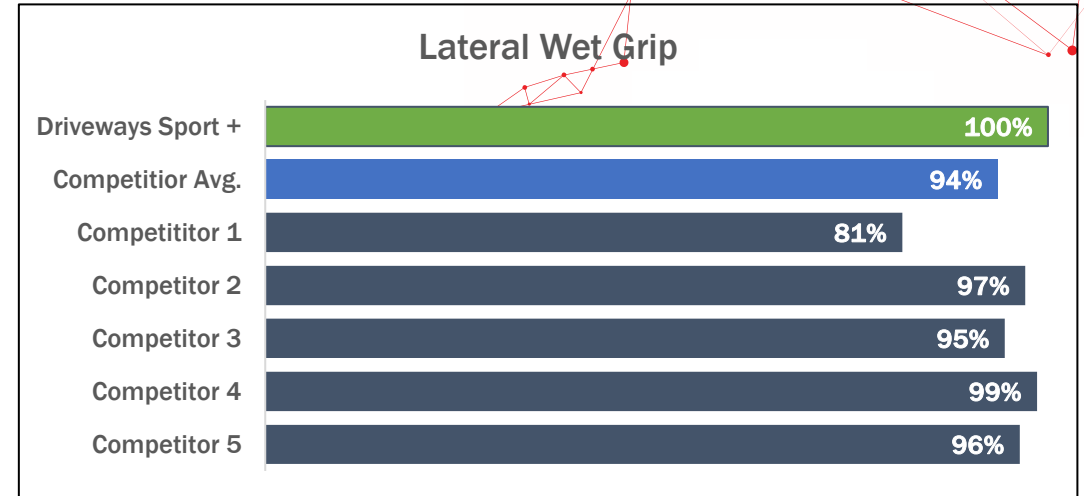
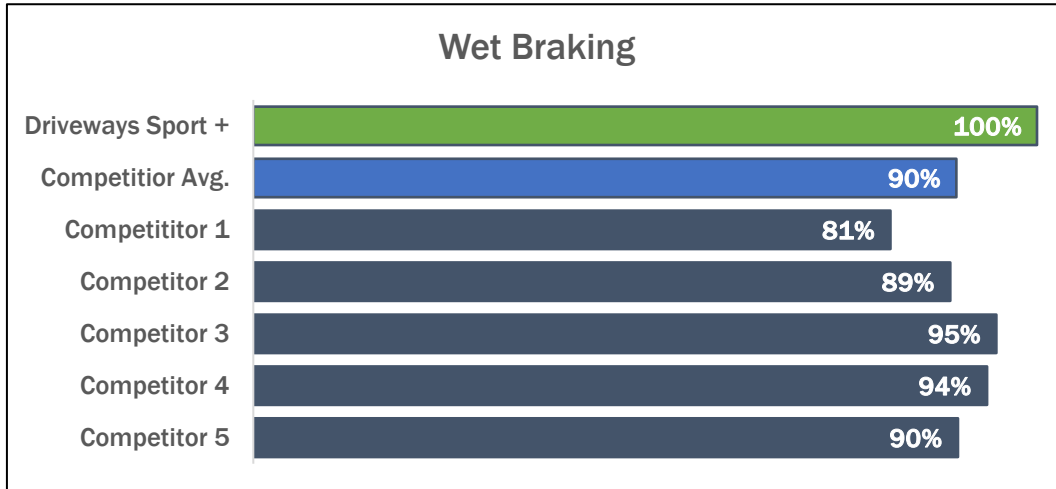
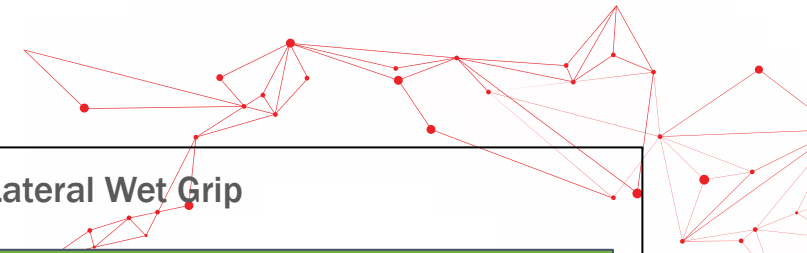


Test Results



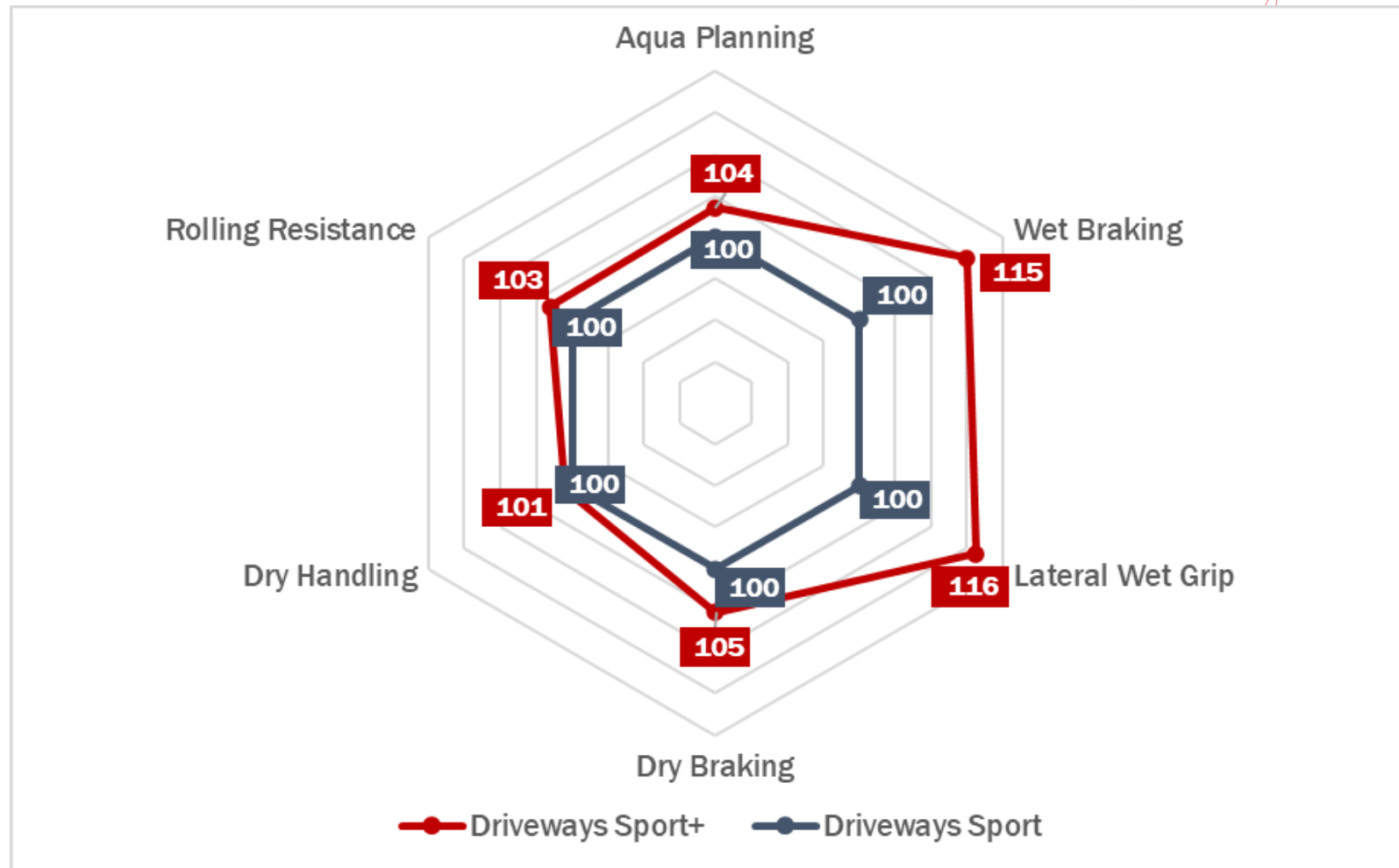
According to TUV SUD Results Driveways Sport + showed better performance wrt competitors on:

- ✓ Wet Braking & Lateral Wet Grip
- ✓ Dry Braking & Dry Handling



Performance Comparison vs Previous Product

- ✓ 15% improvement in wet performance wrt previous pattern thanks to new compound
- ✓ «A» grade wet label (Previous product was :)



Size List / SOP Dates

Inch	Size	Start of Production
17	235/45R17 97Y XL	Dec 2021
17	205/45R17 88W XL	Dec 2021
17	245/45R17 99Y XL	Dec 2021
17	225/45R17 94Y XL	Jan 2022
17	215/45R17 94Y XL	Jan 2022
17	245/40R17 95Y XL	Jan 2022
18	255/35R18 94Y XL	Dec 2021
18	245/40R18 97Y XL	Dec 2021
18	255/45R18 103Y XL	Dec 2021
18	225/40R18 92Y XL	Nov 2021
18	235/45R18 98Y XL	Nov 2021
18	235/40R18 95Y XL	Jan 2022
18	225/45R18 95Y XL	Jan 2022
18	245/50R18 100Y XL	Jan 2022

Inch	Size	Start of Production
19	255/35R19 96Y XL	Dec 2021
19	255/40R19 100Y XL	Dec 2021
19	225/35R19 88Y XL	Jan 2022
19	235/35R19 91Y XL	Jan 2022
19	245/40R19 98Y XL	Jan 2022
20	255/35R20 97Y XL	Jan 2022
20	255/40R20 101Y XL	Jan 2022
20	295/35R20 105Y XL	Jan 2022

